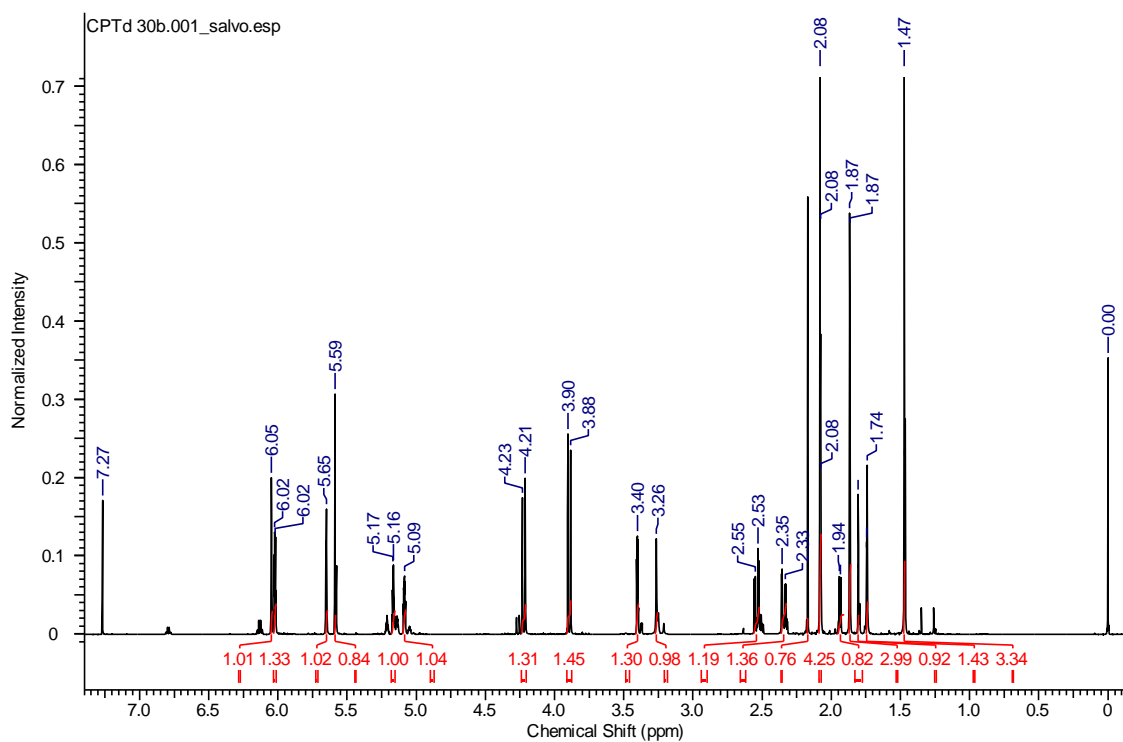


## Supplementary Information

### A New Furanoheliangolide Sesquiterpene Lactone from *Calea pinnatifida* (R. Br.) Less. (Asteraceae) and Evaluation of Its Trypanocidal and Leishmanicidal Activities

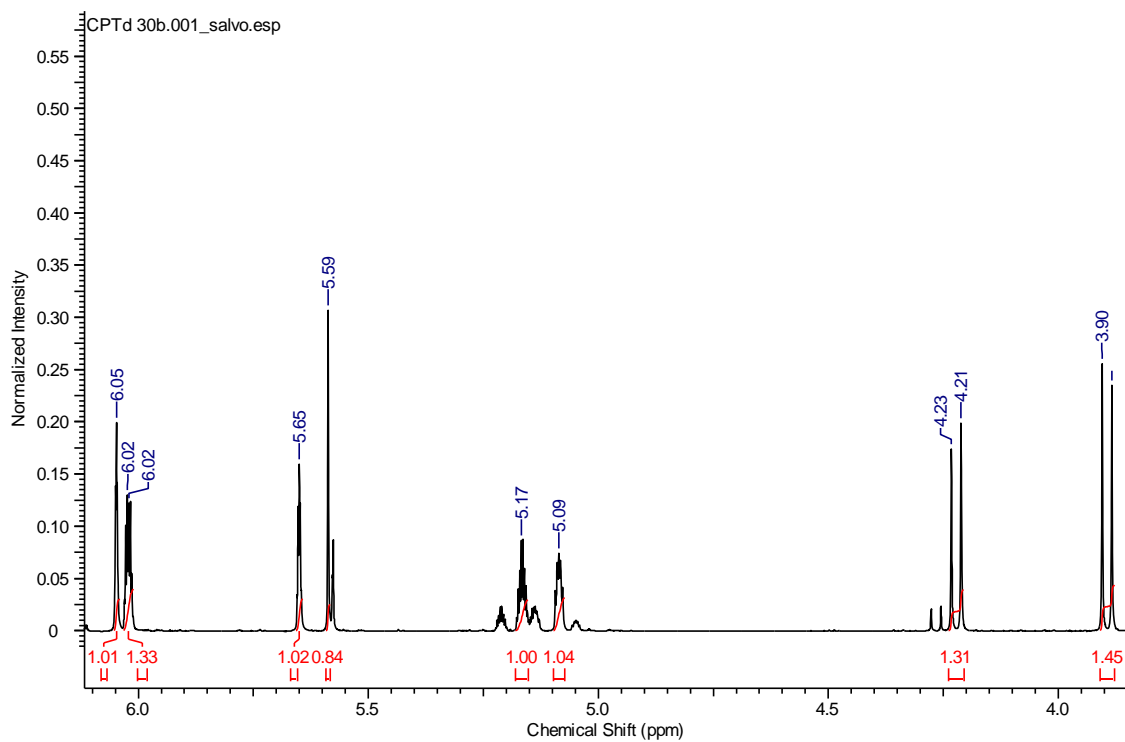
Tamires Cardoso Lima,<sup>a</sup> Rafaela de Jesus Souza,<sup>a</sup> Milene H. Moraes,<sup>b</sup> Mário Steindel<sup>b</sup>  
and Maique Weber Biavatti<sup>a</sup>

<sup>a</sup>Departamento de Ciências Farmacêuticas, CCS and <sup>b</sup>Departamento de Microbiologia, Imunologia e Parasitologia, CCB, Universidade Federal de Santa Catarina (UFSC), 88040-900 Florianópolis-SC, Brazil

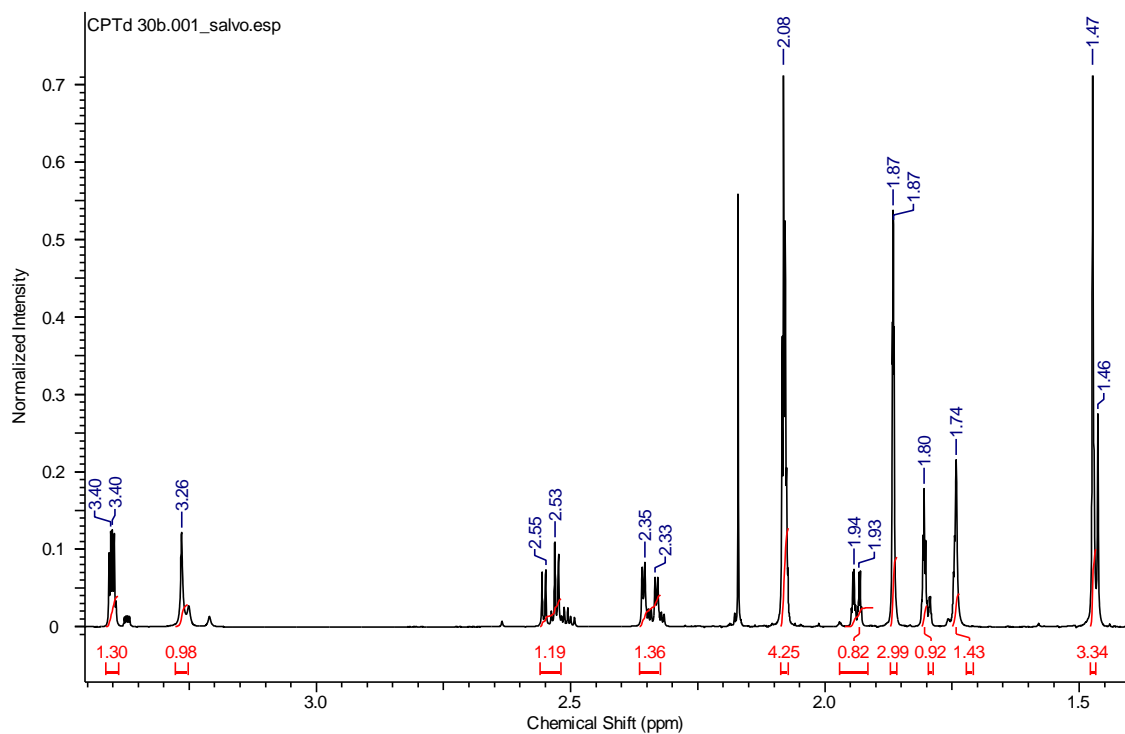


**Figure S1.** <sup>1</sup>H NMR spectrum (600 MHz, CDCl<sub>3</sub>) of compound **1**.

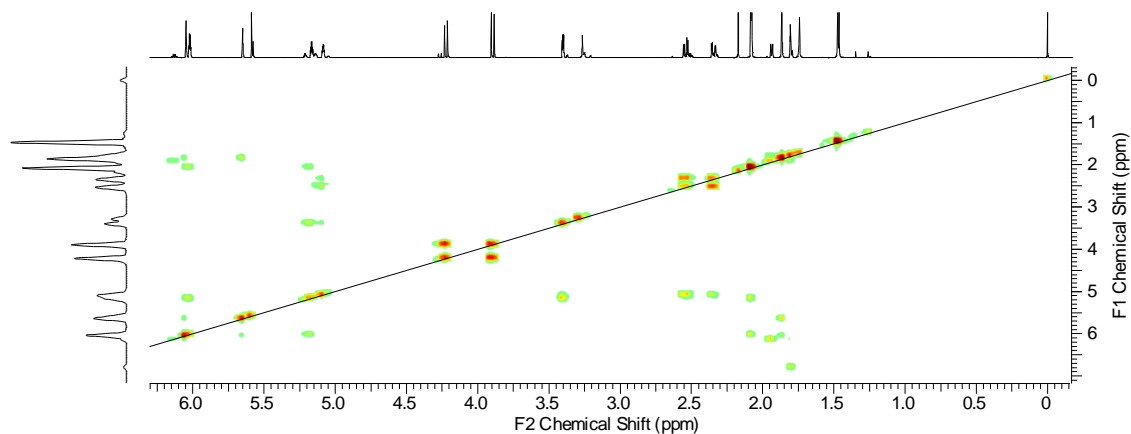
\*e-mail: maique.biavatti@ufsc.br, maique\_wb@hotmail.com



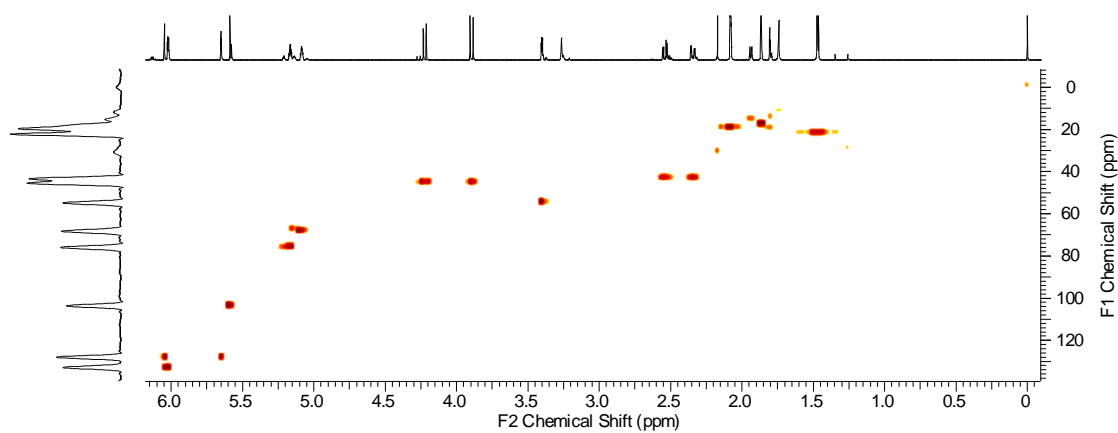
**Figure S2.** Expanded  $^1\text{H}$  NMR spectrum (600 MHz,  $\text{CDCl}_3$ ) of compound **1**.



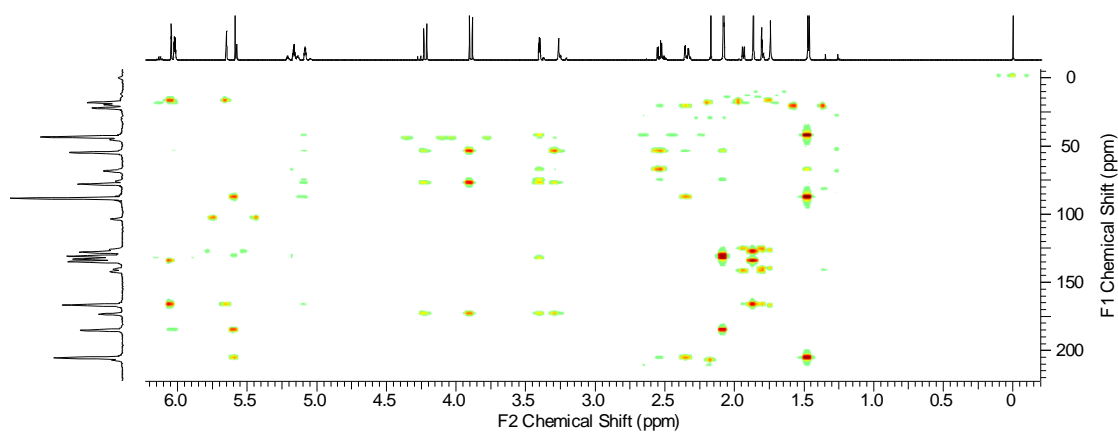
**Figure S3.** Expanded  $^1\text{H}$  NMR spectrum (600 MHz,  $\text{CDCl}_3$ ) of compound **1**.



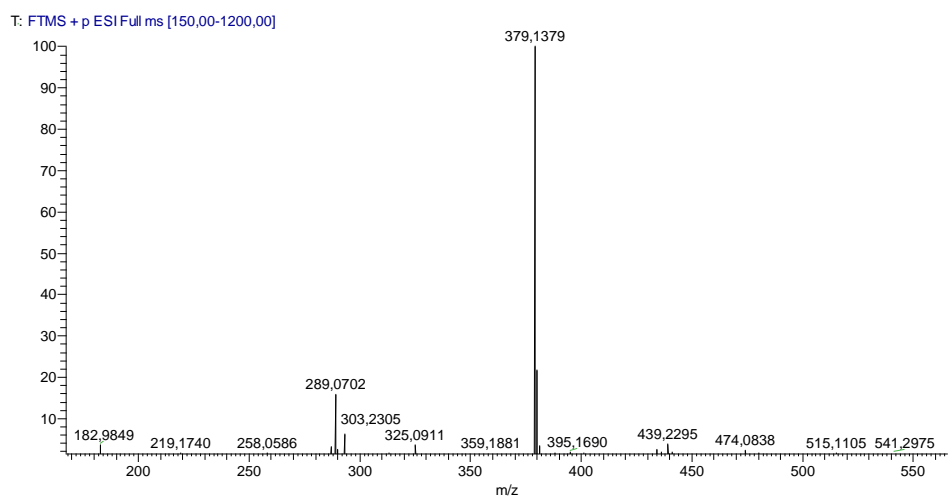
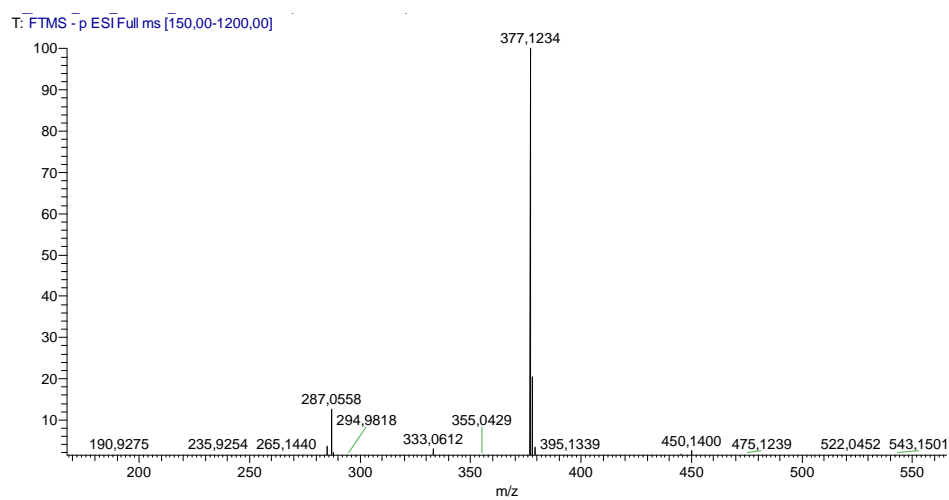
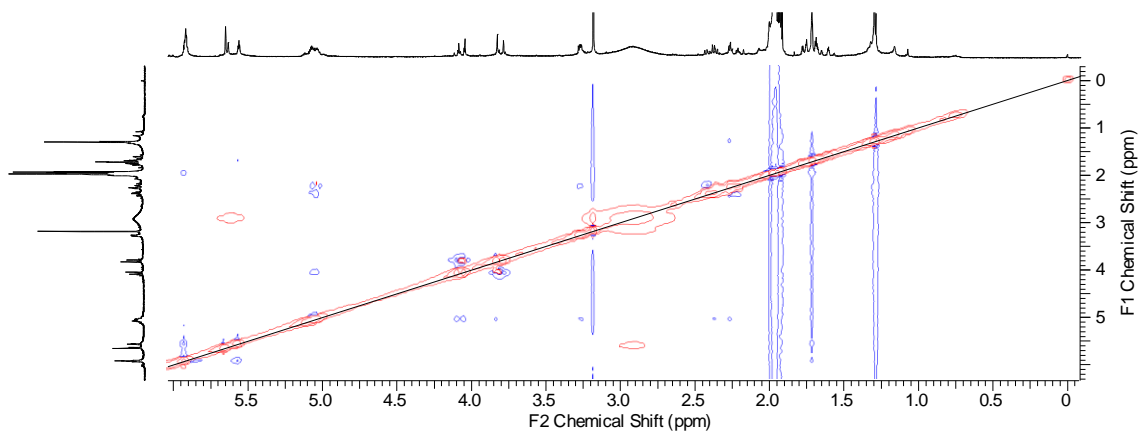
**Figure S4.** COSY correlation map (600 MHz, CDCl<sub>3</sub>) of compound **1**.

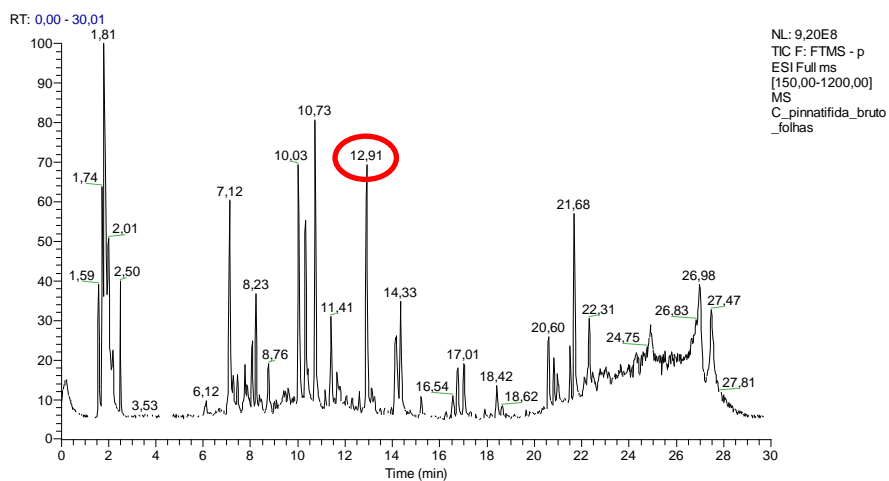


**Figure S5.** HSQC correlation map (600 MHz, CDCl<sub>3</sub>) of compound **1**.

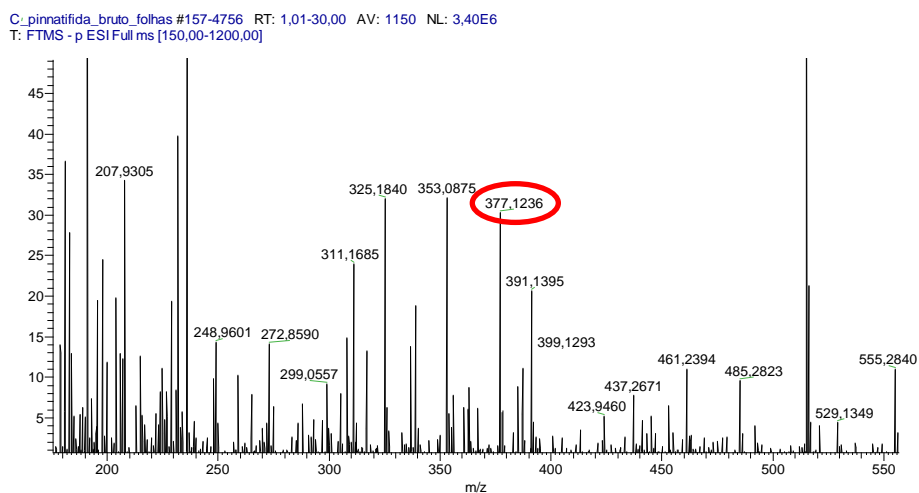


**Figure S6.** HMBC correlation map (600 MHz, CDCl<sub>3</sub>) of compound **1**.

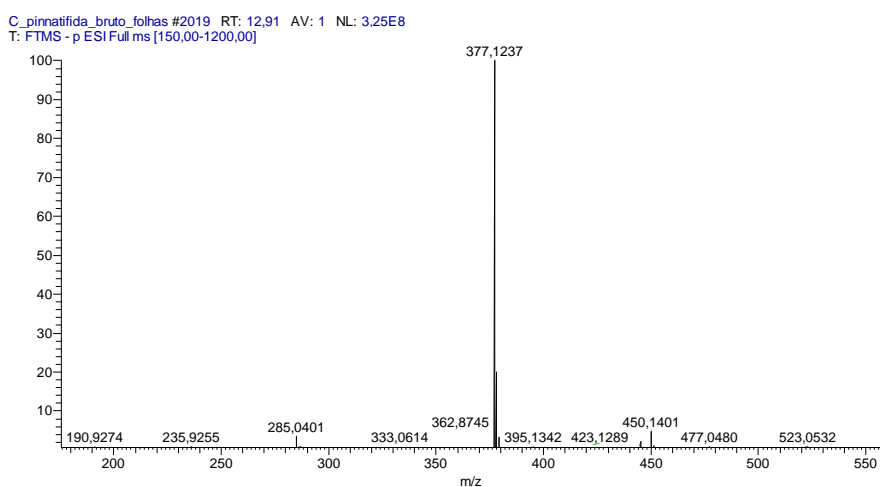




**Figure S10.** Total ion chromatogram (TIC) of crude extract of *C. pinnatifida* in negative mode (retention time of compound **1** is 12.91 min).



**Figure S11.** Mass spectra of total ion chromatogram (TIC) in negative mode ( $m/z$  377.1236 is attributed to  $[M - H]^-$  from furanoheliangolide).



**Figure S12.** Mass spectra of the peak at retention time 12.91 min, in negative mode.

C\_pinnatifida\_bruto\_folhas #2020 RT: 12.92 AV: 1 NL: 1.06E7  
F: FTMS - p ESI Full ms2 1000.00@hcd35.00 [1]

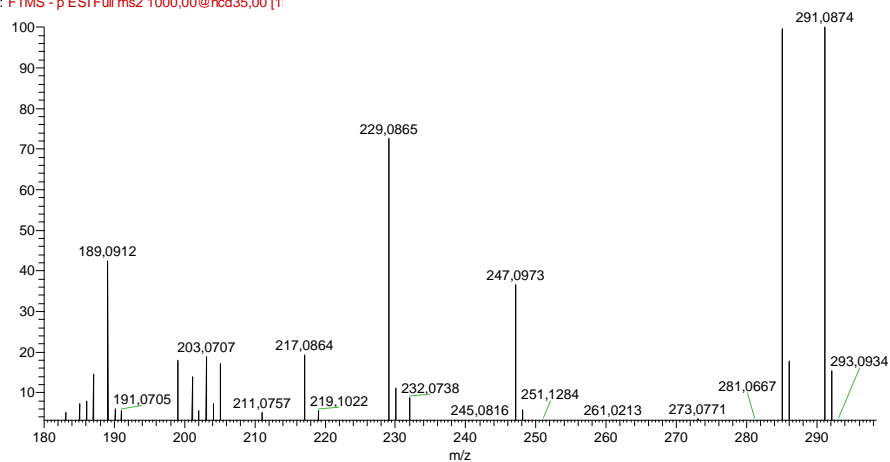


Figure S13. Full MS<sup>2</sup> of the peak at 12.91 min.

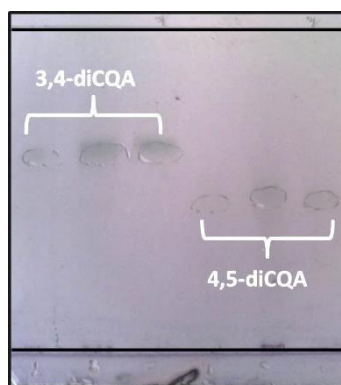


Figure S14. TLC of compounds 6 and 8 on reverse phase (mobile phase: H<sub>2</sub>O-MeOH 60:40).