

Supplementary Information

Allergenic Fragrances Analysis in Brazilian Perfumes by Headspace Solid Phase Microextraction and Gas Chromatography-Mass Detector (HS-SPME-GC-MS)

Clêrton L. Gomes,^{a,c} Ari C. A. de Lima,^b Pablo G. A. Barbosa,^a Rouse S. Costa,^a
Diego Q. Melo^d and Ronaldo F. Nascimento^{*a}

^aDepartamento de Química Analítica e Físico-Química, bloco 940, Centro de Ciências and

^bDepartamento de Engenharia Hidráulica e Ambiental, Bloco 713, Centro de Tecnologia,
Universidade Federal do Ceará, Campus do Pici, 60440-900 Fortaleza-CE, Brazil

^cInstituto Federal de Educação Ciência e Tecnologia do Ceará, Campus Aracati,
62800-000 Aracati-CE, Brazil

^dInstituto Federal de Educação, Ciência e Tecnologia do Sertão Pernambucano,
Campus Petrolina, 56314-520 Petrolina-PE, Brazil

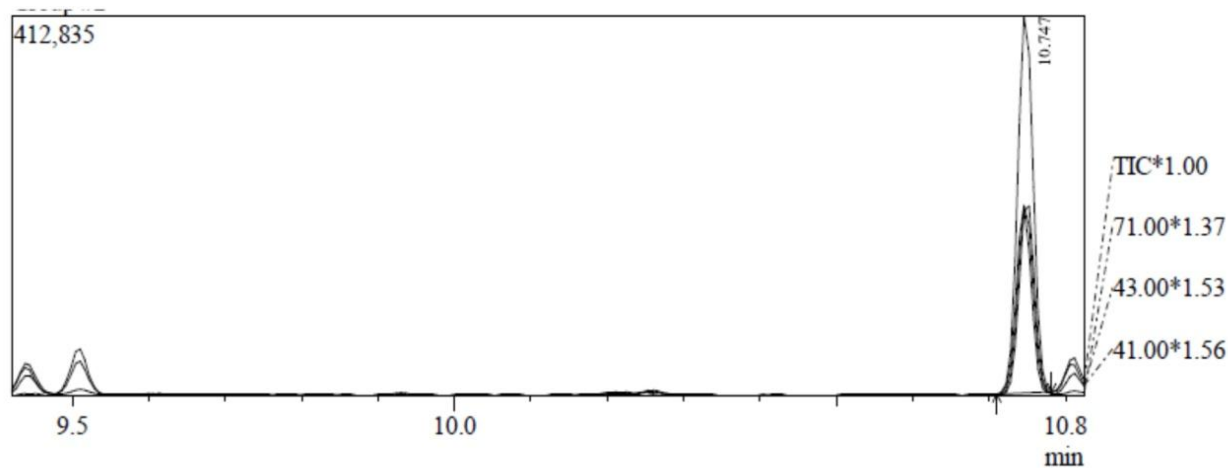


Figure S1. Chromatogram with linalol fragments (m/z 41, 43 and 71).

*e-mail: ronaldo@ufc.br

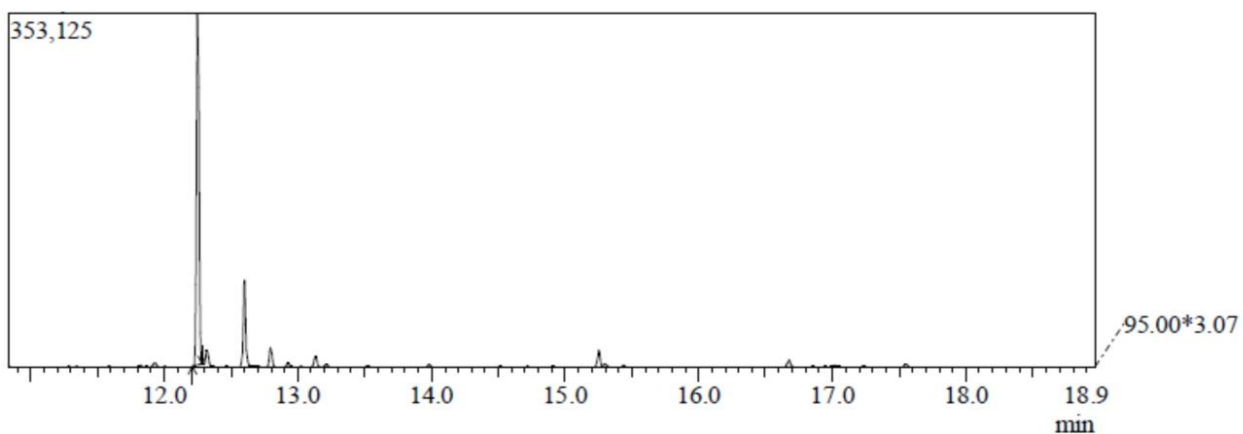


Figure S2. Chromatogram with methyl 2-octynoate fragments (m/z 95).

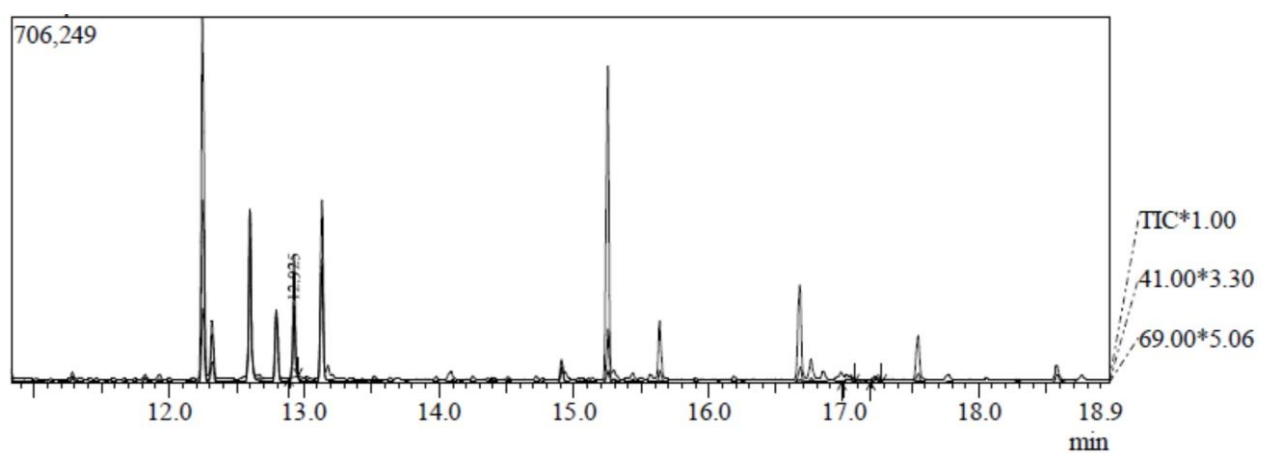


Figure S3. Chromatogram with geraniol fragments (m/z 41 and 69).

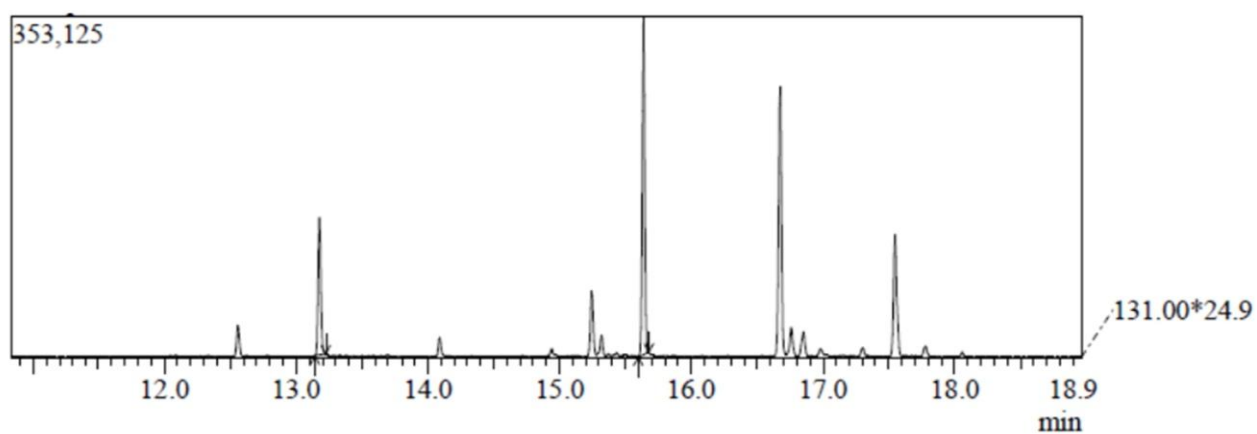


Figure S4. Chromatogram with cinnamaldehyde fragments (m/z 131).

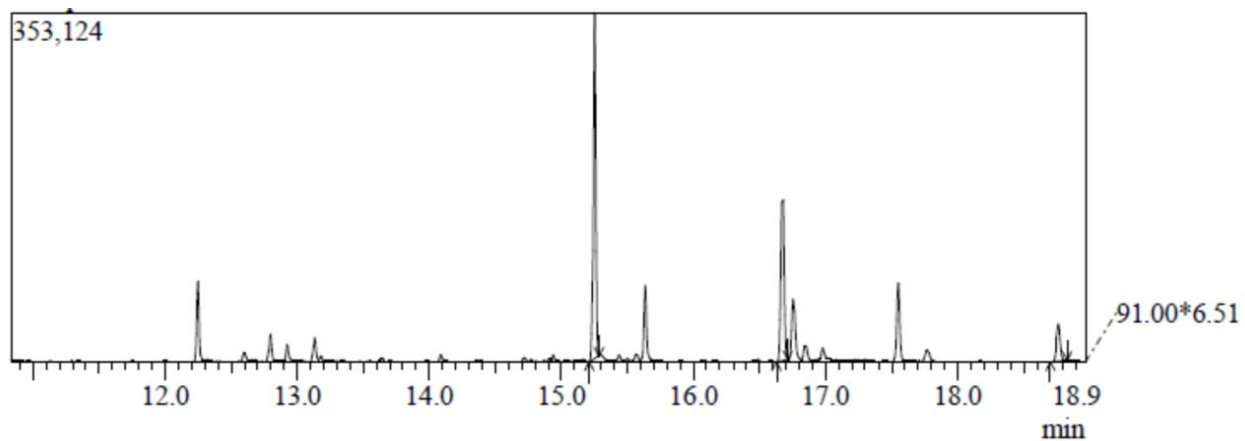


Figure S5. Chromatogram with cinnamic alcohol fragments (m/z 91).

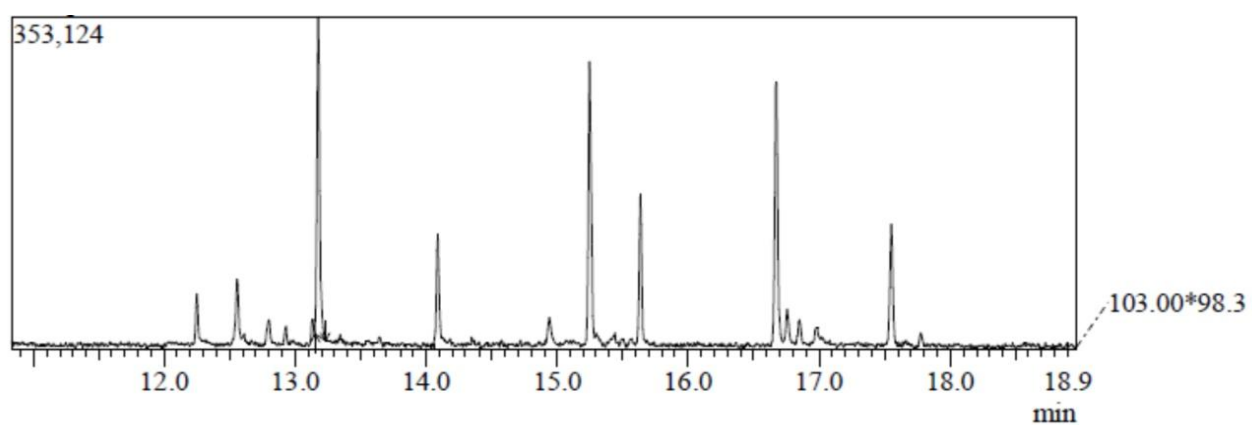


Figure S6. Chromatogram with eugenol alcohol fragments (m/z 103).

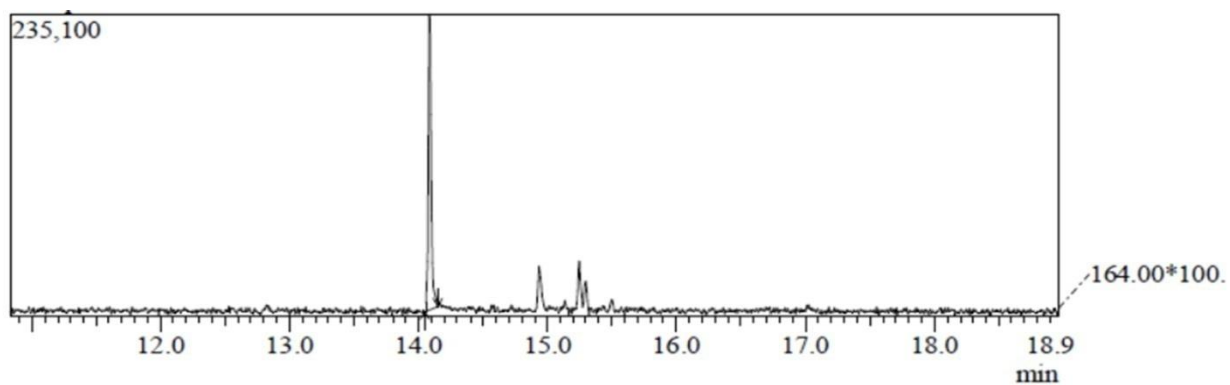


Figure S7. Chromatogram with isoeugenol fragments (m/z 164).

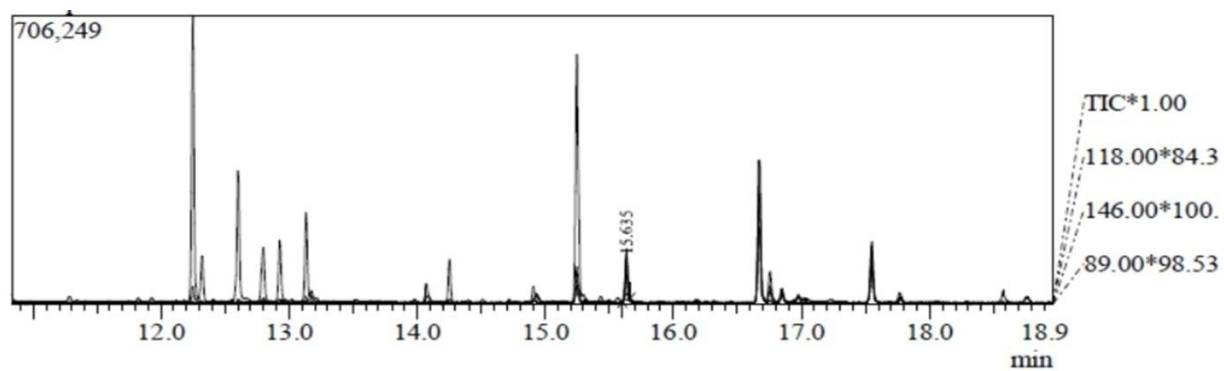


Figure S8. Chromatogram with coumarin fragments (m/z 89, 118 and 146).

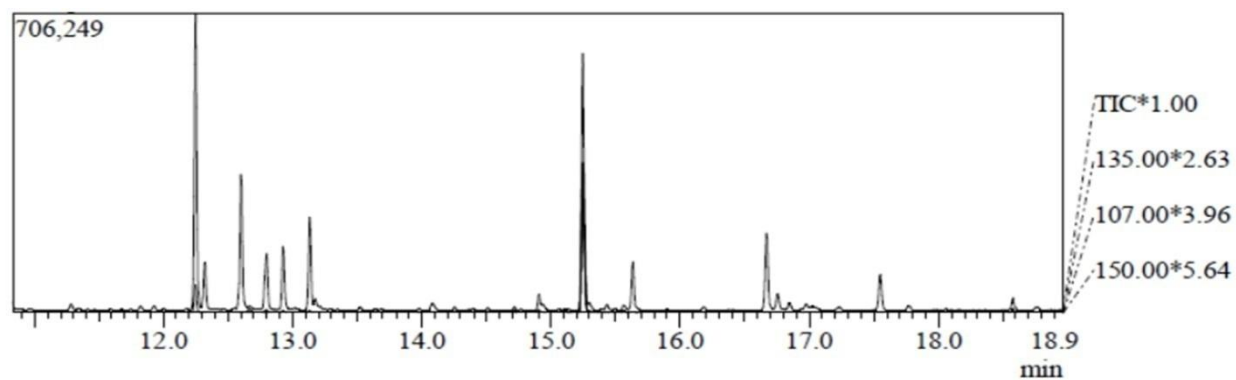


Figure S9. Chromatogram with α -isomethylioneno fragments (m/z 107, 135 and 150).

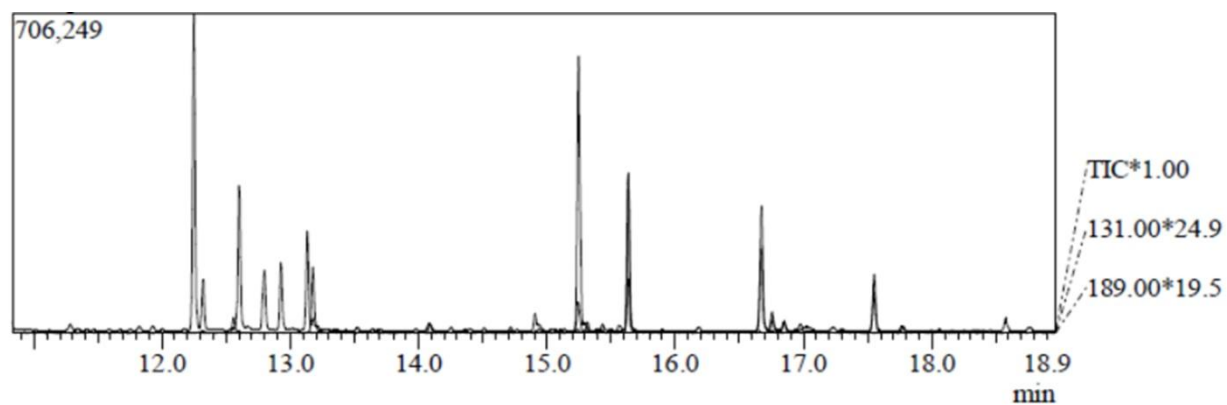


Figure S10. Chromatogram with lialial® fragments (m/z 131 and 189).

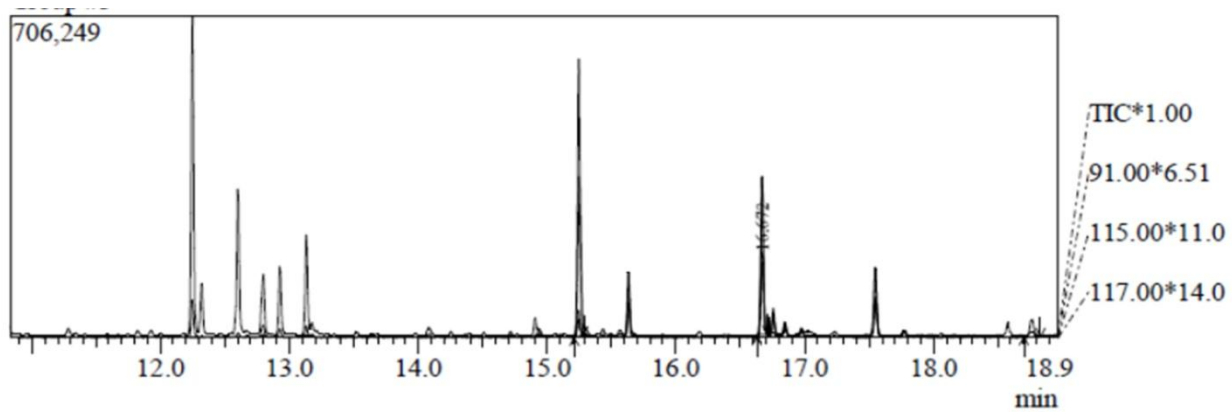


Figure S11. Chromatogram with amylcinnamaldehyde fragments (m/z 91, 115 and 117).

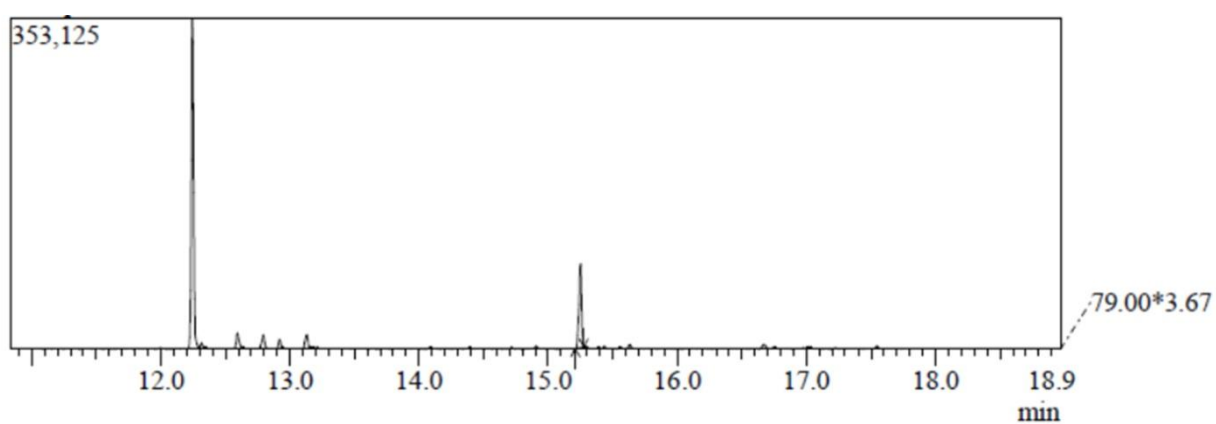


Figure S12. Chromatogram with lyral® fragments (m/z 79).

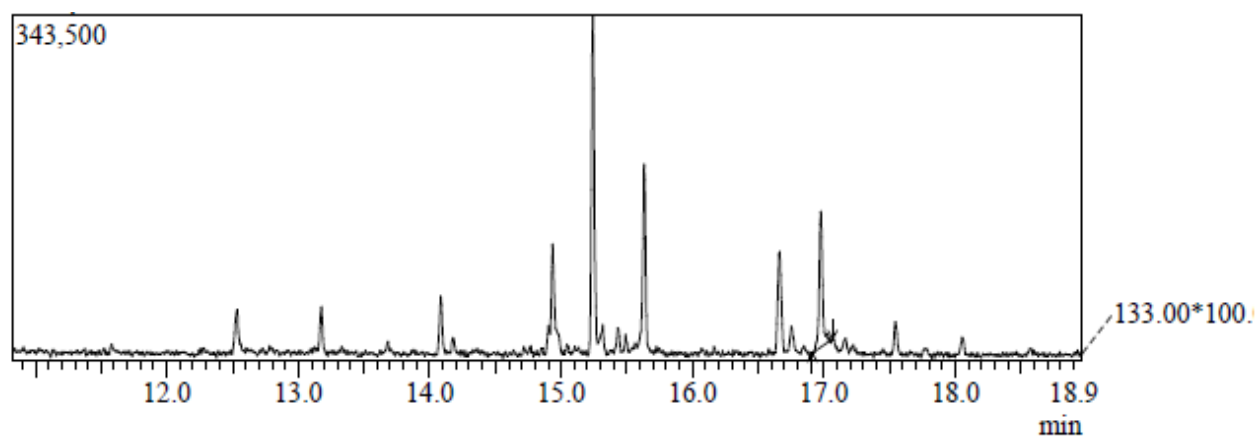


Figure S13. Chromatogram with amylcinnamic alcohol fragments (m/z 133).

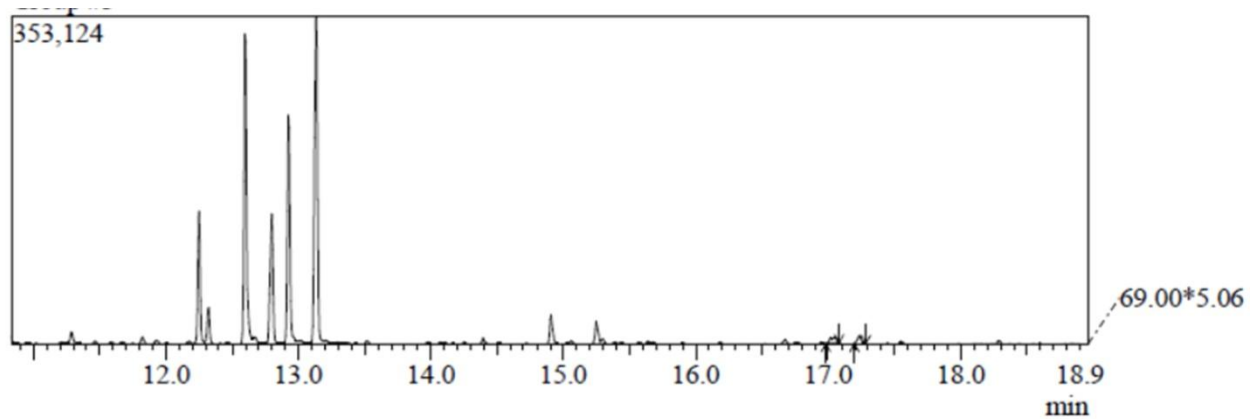


Figure S14. Chromatogram with farnesol fragments (m/z 69).

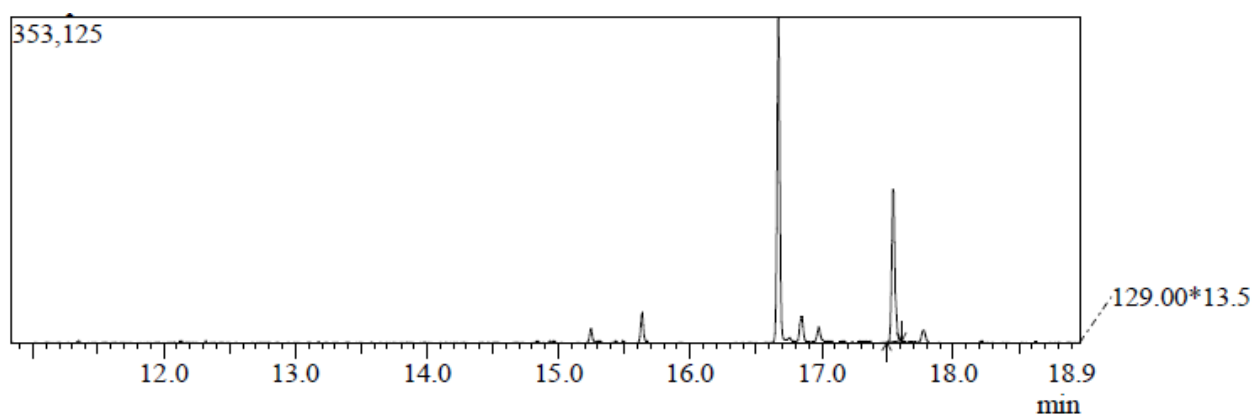


Figure S15. Chromatogram with hexylcinnamaldehyde fragments (m/z 129).

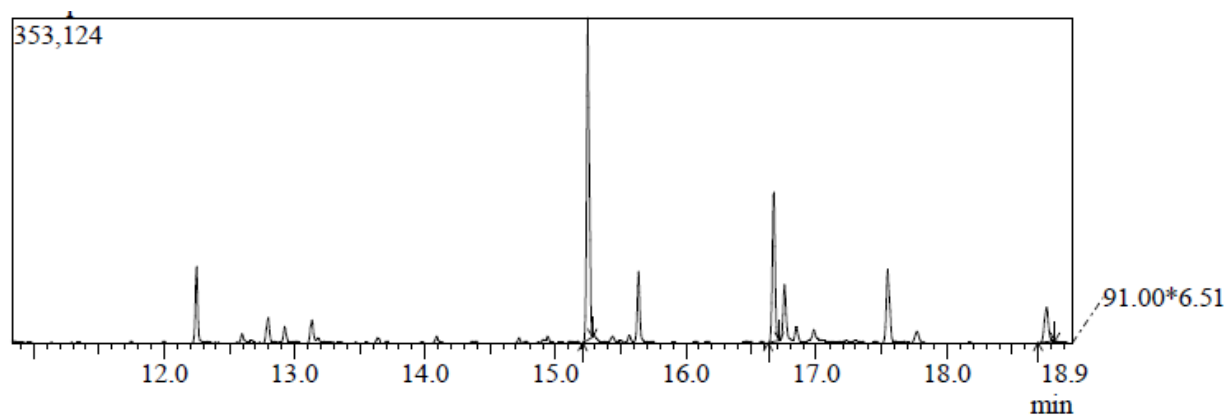


Figure S16. Chromatogram with benzyl salicylate fragments (m/z 91).

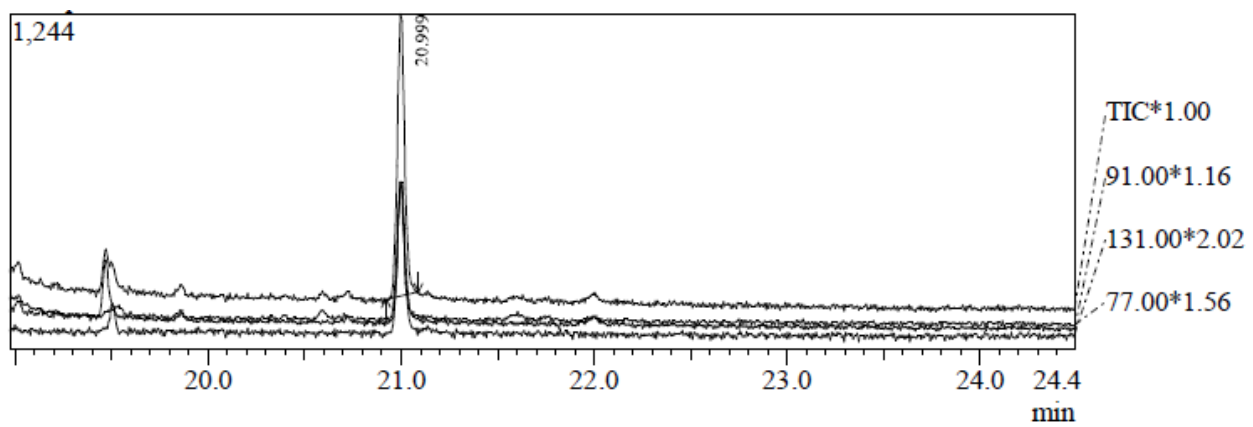


Figure S17. Chromatogram with benzyl cinnamate fragments (m/z 91, 77 and 131).