

## Supplementary Information

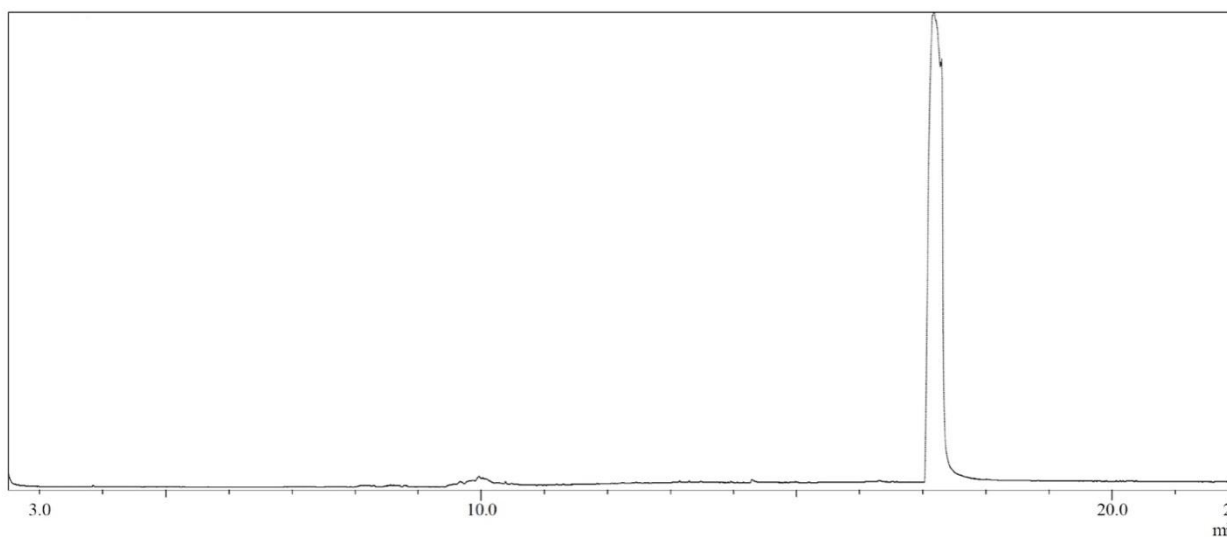
### The Influence of Methoxy and Ethoxy Groups on Supramolecular Arrangement of Two Methoxy-chalcones

Jean M. F. Custodio,<sup>a</sup> Eduardo C. M. Faria,<sup>a</sup> Lóide O. Sallum,<sup>a</sup> Vitor S. Duarte,<sup>a</sup> Wesley F. Vaz,<sup>a,b</sup> Gilberto L. B. de Aquino,<sup>a</sup> Paulo S. Carvalho Jr.<sup>a,c</sup> and Hamilton B. Napolitano<sup>\*a</sup>

<sup>a</sup>Campus de Ciências Exatas e Tecnológicas, Universidade Estadual de Goiás,  
75132-400 Anápolis-GO, Brazil

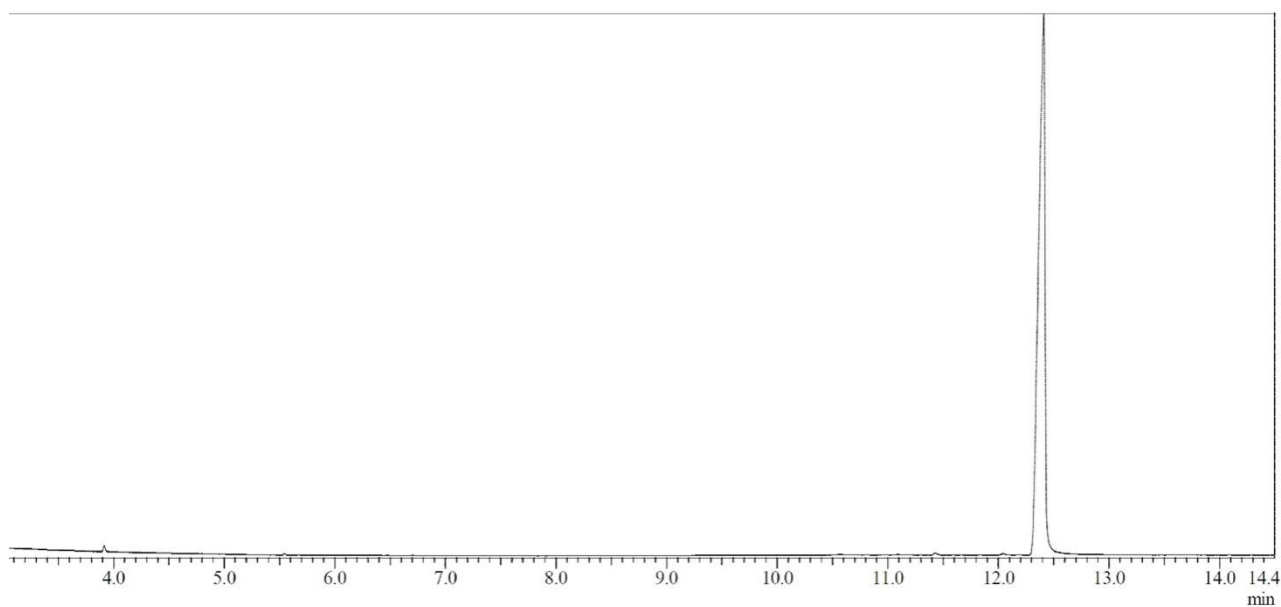
<sup>b</sup>Instituto Federal de Educação, Ciência e Tecnologia de Mato Grosso, 78455-000  
Lucas do Rio Verde-MT, Brazil

<sup>c</sup>Instituto de Física de São Carlos, Universidade de São Paulo, CP 369,  
13560-970 São Carlos-SP, Brazil

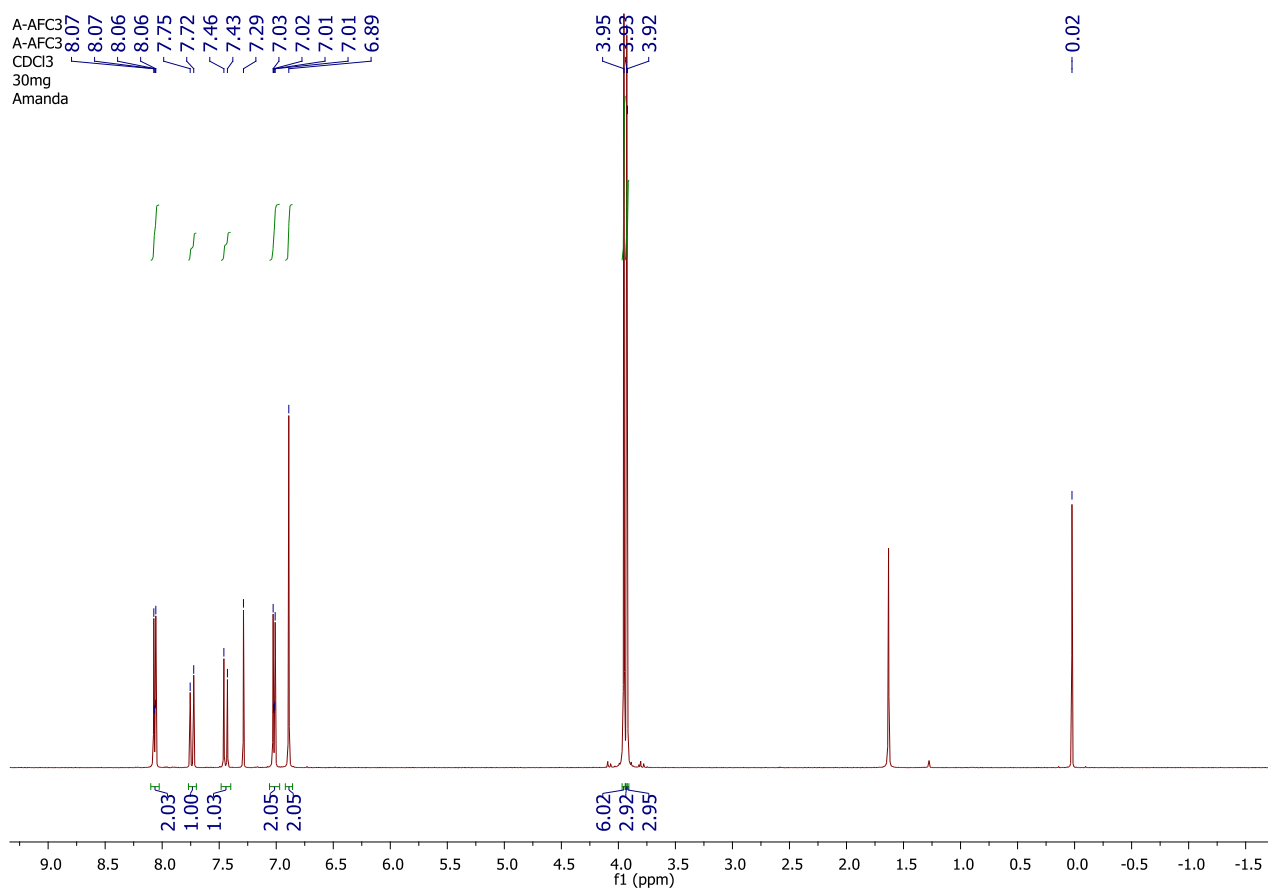


**Figure S1.** GC-MS chromatogram of chalcone **1**.

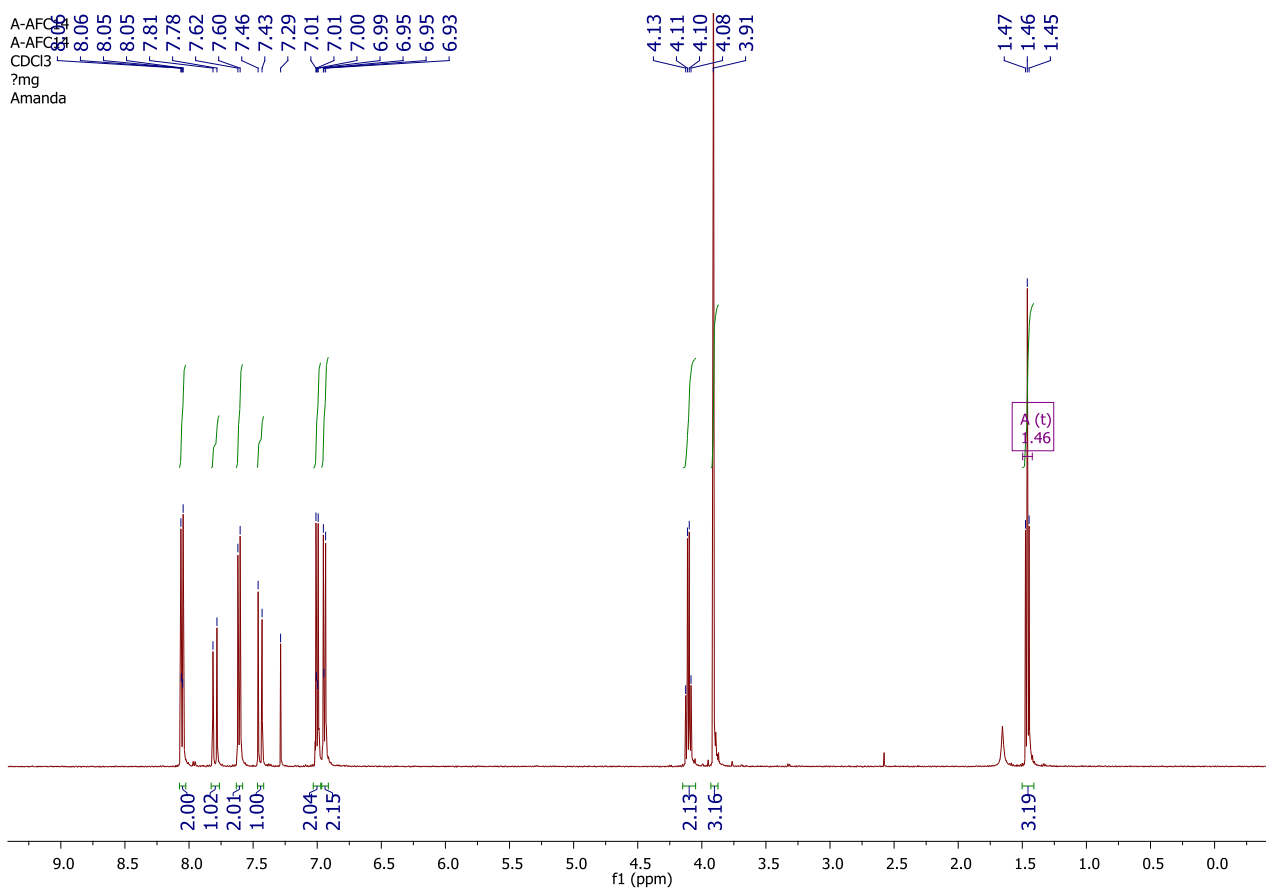
\*e-mail: hbnapolitano@gmail.com



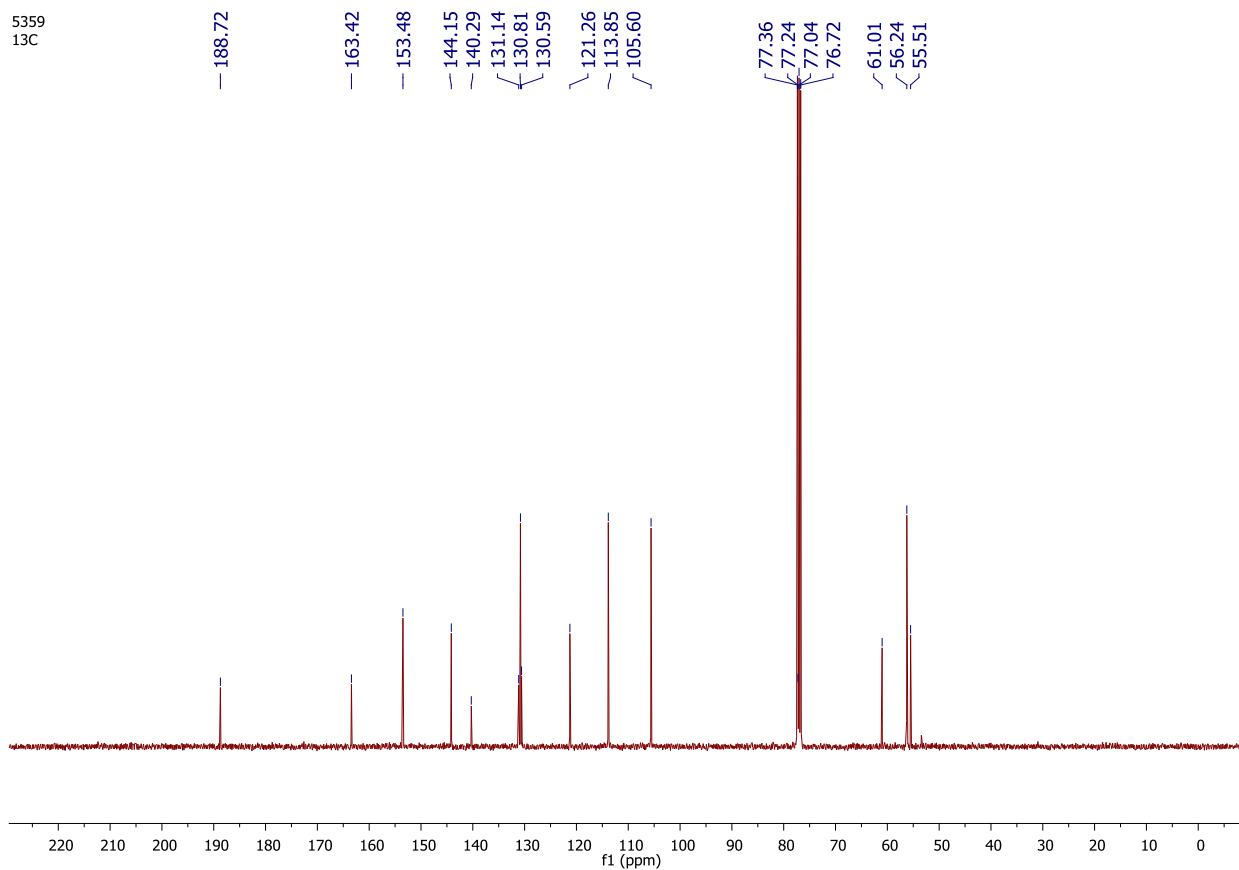
**Figure S2.** GC-MS chromatogram of chalcone **2**.



**Figure S3.** <sup>1</sup>H NMR spectrum (500 MHz, CDCl<sub>3</sub> and MeOD) of chalcone **1**.

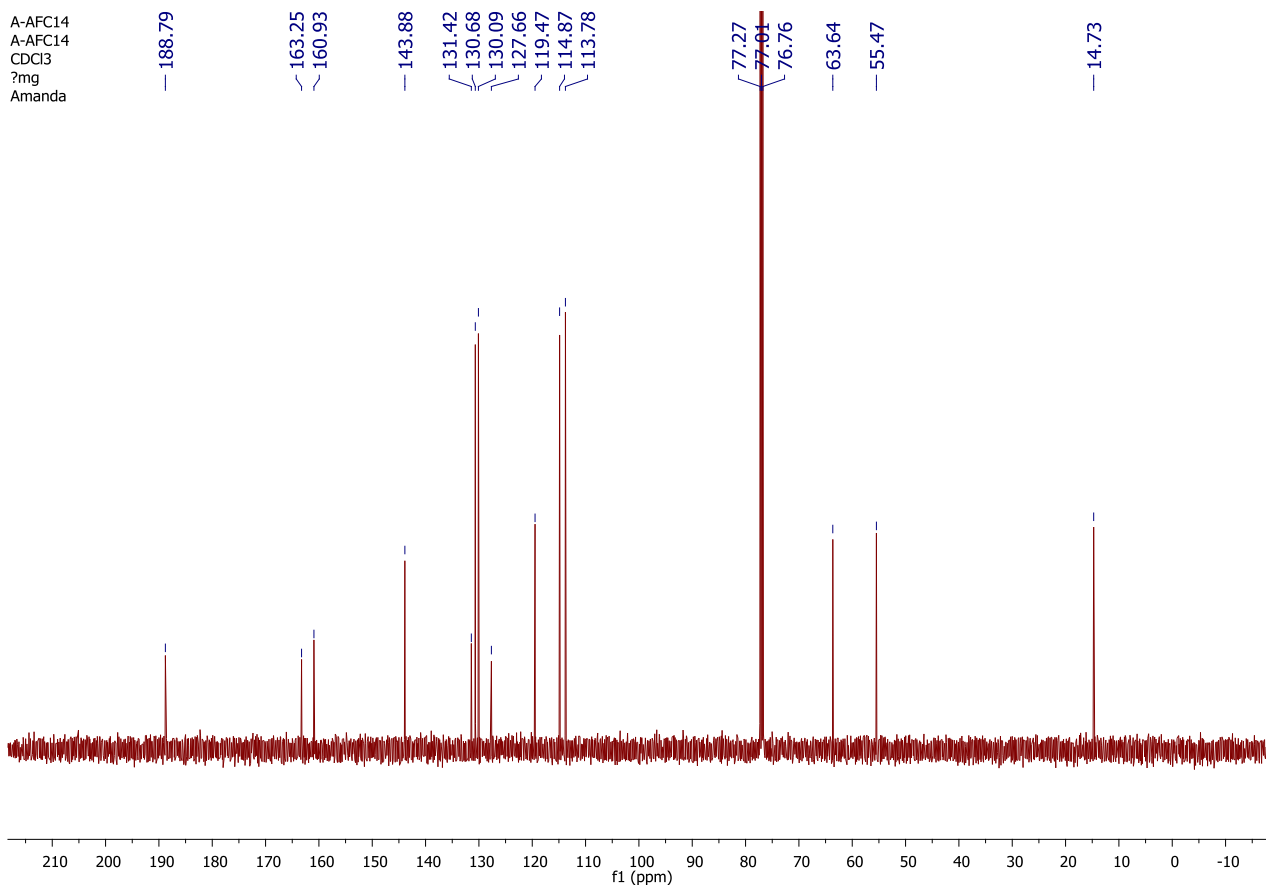


**Figure S4.** <sup>1</sup>H NMR spectrum (500 MHz, CDCl<sub>3</sub> and MeOD) of chalcone **2**.



**Figure S5.** <sup>13</sup>C NMR spectrum (500 MHz, CDCl<sub>3</sub> and MeOD) of chalcone **1**.

A-AFC14  
A-AFC14  
CDCl<sub>3</sub>  
?mg  
Amanda



**Figure S6.** <sup>13</sup>C NMR spectrum (500 MHz, CDCl<sub>3</sub> and MeOD) of chalcone **2**.