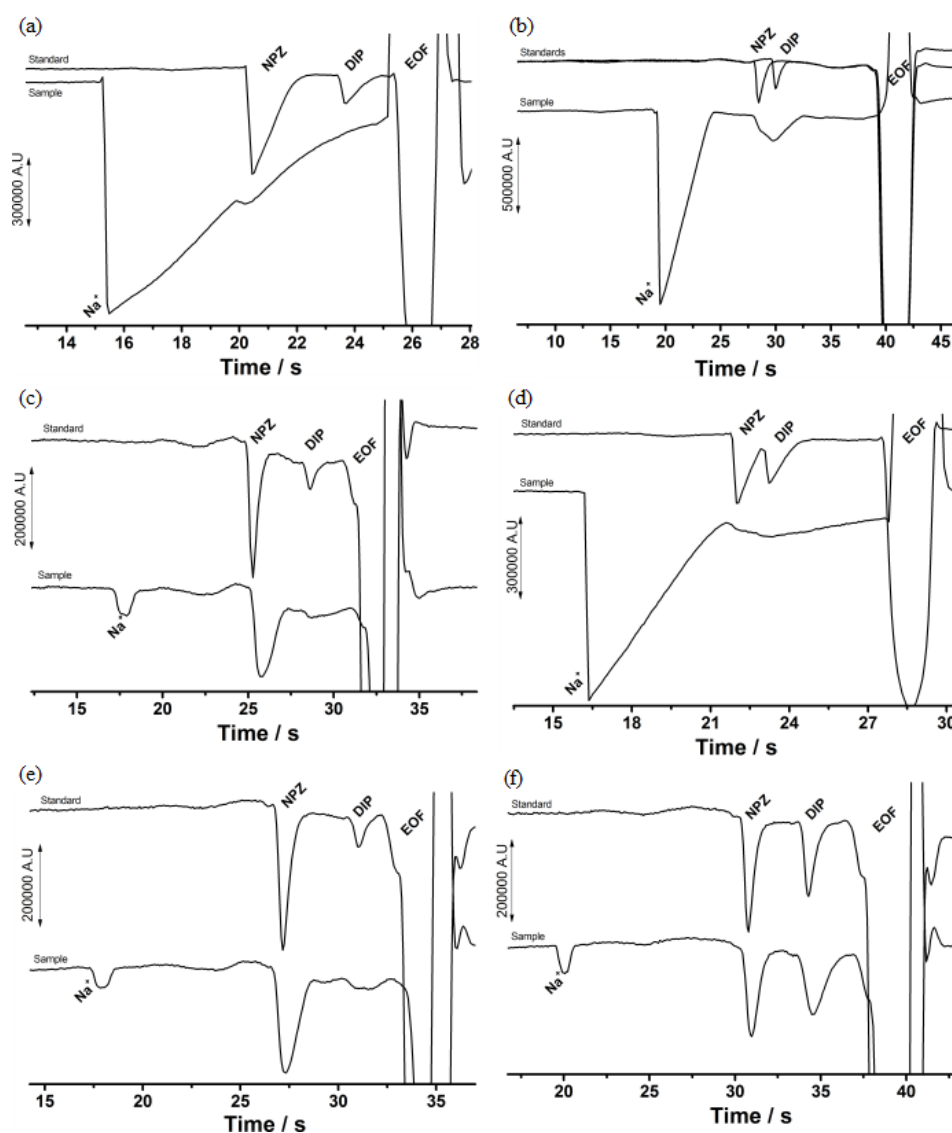


## Supplementary Information

### Sub-Minute Method for Determination of Naphazoline in the Presence of Diphenhydramine, Pheniramine or Chlorpheniramine by Capillary Electrophoresis

Michelle M. A. C. Ribeiro, Mariana C. Marra, Brenda M. C. Costa, Thiago C. Oliveira, Alex D. Batista, Rodrigo A. A. Muñoz and Eduardo M. Richter\*

Instituto de Química, Universidade Federal de Uberlândia, Av. João Naves de Ávila, 2121, 38400-902 Uberlândia-MG, Brazil



**Figure S1.** Electropherograms obtained for standard and sample solutions in different BGEs: (a) 10 mmol L<sup>-1</sup> boric acid with pH-adjusted to 9.5 with NaOH; (b) 20 mmol L<sup>-1</sup> MES with pH-adjusted to 6.0 with NaOH; (c) 50 mmol L<sup>-1</sup> CHES with pH-adjusted to 8.5 with NaOH; (d) 20 mmol L<sup>-1</sup> CHES with pH-adjusted to 8.5 with NaOH; (e) 12 mmol L<sup>-1</sup> TEA + 10 mmol L<sup>-1</sup> DMX with pH-adjusted to 8.5 with NaOH; (f) 20 mmol L<sup>-1</sup> HIS + 10 mmol L<sup>-1</sup> DMX with pH-adjusted to 9.5 with NaOH. For other conditions, see Figure 2 in the main text.

\*e-mail: emrichter@ufu.br