


Supplementary Information

Multi-Element Evaluation in Black Pepper (*Piper nigrum* L.) According to the Processing

Maiara Krause,^a Luiza V. Vieira,^a Tiago P. Cunha,^a Geisamanda P. Brandão,^a Paulo Roberto Filgueiras^a
and Maria Tereza W. D. Carneiro *^a

^aDepartamento de Química, Universidade Federal do Espírito Santo, Av. Fernando Ferrari, 514,
29075-910 Vitória-ES, Brazil

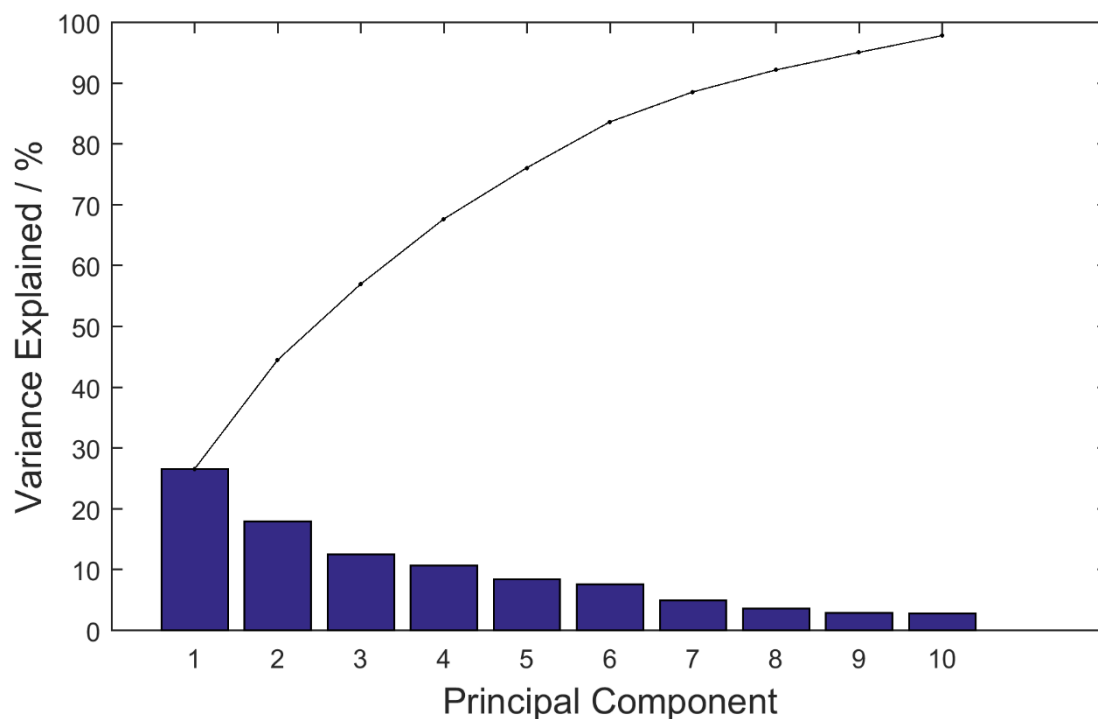


Figure S1. Percentage of variance explained by each principal component.

Table S1. Concentrations of the elements in black peppercorn and ground samples

Element	Peppercorn			Ground		
	Mean ^a	Median	Range	Mean ^a	Median	Range
As / ($\mu\text{g kg}^{-1}$)	368 \pm 665	81	< 14.0-2623	112 \pm 130	63	40-580
Cd / ($\mu\text{g kg}^{-1}$)	14.6 \pm 3.6	14.3	9.7-24.9	15.5 \pm 5.3	13.9	8.8-36
Co / ($\mu\text{g kg}^{-1}$)	35 \pm 37	19.8	12.1-194	37 \pm 19	32	16.6-97
Cu / (mg kg^{-1})	6.38 \pm 0.61	6.2	5.5-8.0	5.9 \pm 1.5	5.6	3.8-9.5
Fe / (mg kg^{-1})	80 \pm 26	82	16.6-137	354 \pm 321	159	70-1147
Mn / (mg kg^{-1})	72 \pm 33	74	26.9-125	61 \pm 17	53	38-95
Mo / ($\mu\text{g kg}^{-1}$)	458 \pm 380	334	71-1283	343 \pm 248	254	148-976
Ni / ($\mu\text{g kg}^{-1}$)	675 \pm 317	550	353-1249	618 \pm 194	560	284-1217
Pb / ($\mu\text{g kg}^{-1}$)	37 \pm 19	33	10.9-89	188 \pm 200	121	21-947
Se / ($\mu\text{g kg}^{-1}$)	233 \pm 98	222	51-434	242 \pm 63	223	144-374
V / ($\mu\text{g kg}^{-1}$)	90 \pm 36	43	< 20.3-142	179 \pm 212	90	64-1072
Zn / (mg kg^{-1})	10 \pm 4.3	9.3	< 5.7-21.0	11.5 \pm 5.5	11.1	3.4-26

^aMean of samples \pm standard deviation: peppercorn (n = 25); ground (n = 25).