

## Supplementary Information

### Linear Peptides Analogues from *Jatropha*'s Orbitides Promote Migration of Human Neonatal Foreskin Fibroblasts *in vitro* and Collagen Deposition

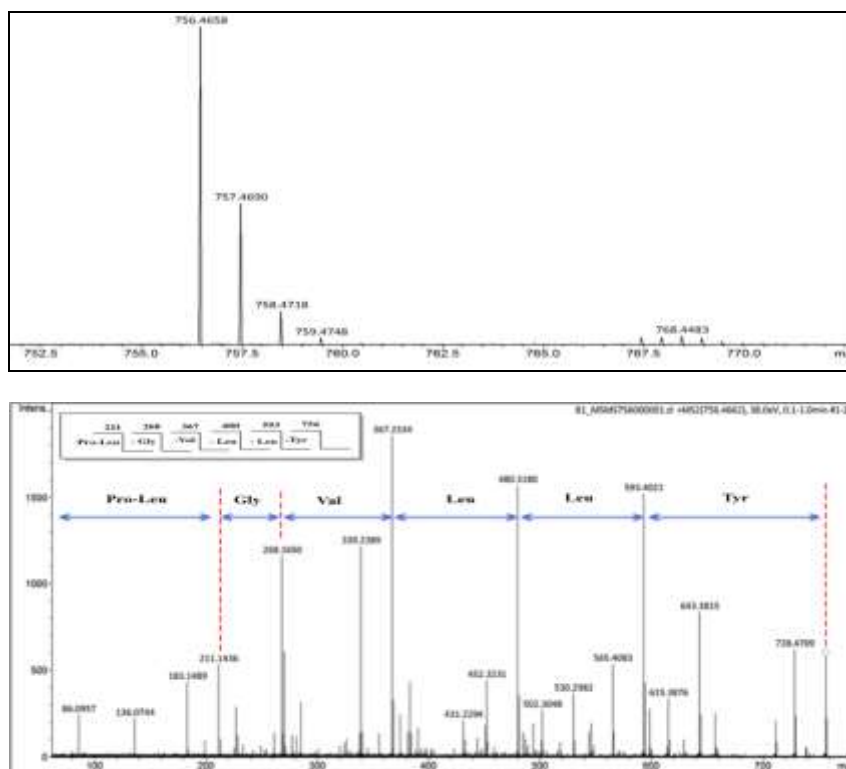
Suelem D. Ramalho,<sup>a</sup> Meri Emili F. Pinto,<sup>a</sup> Renata K. Andricopulo,<sup>b</sup> Paulo R. S. Sanches,<sup>a</sup> Edilberto R. Silveira,<sup>c</sup> Eduardo M. Cilli,<sup>a</sup> Adriano D. Andricopulo<sup>b</sup> and Vanderlan S. Bolzani<sup>\*a</sup>

<sup>a</sup>Instituto de Química, Universidade Estadual Paulista (Unesp), 14800-060 Araraquara-SP, Brazil

<sup>b</sup>Instituto de Física de São Carlos (IFSC), Universidade de São Paulo (USP), 13566-590 São Carlos-SP, Brazil

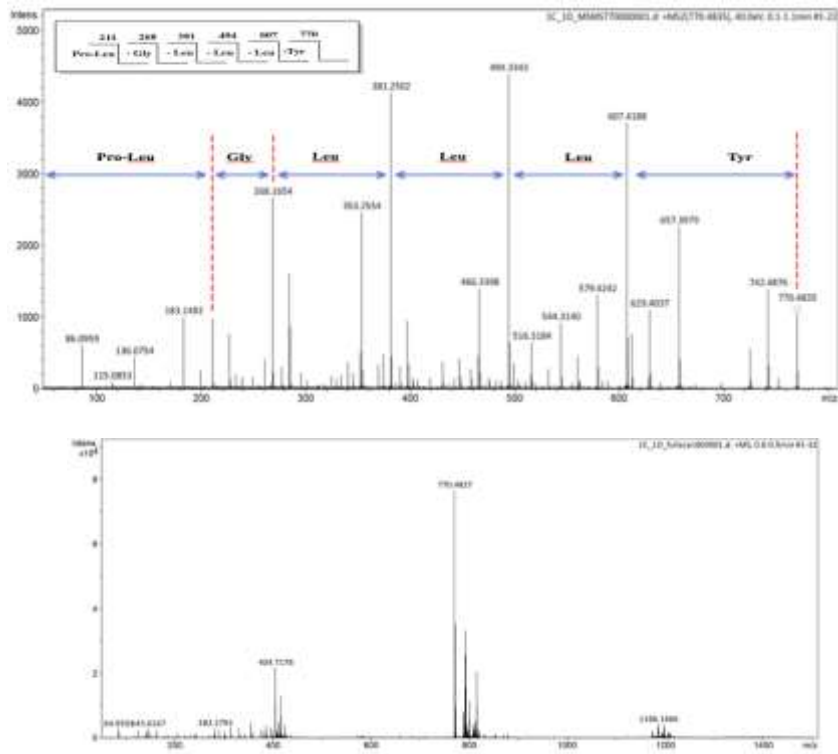
<sup>c</sup>Departamento de Fisiologia e Farmacologia, Universidade Federal do Ceará, 60430-270 Fortaleza-CE, Brazil

(a) pohlianin A

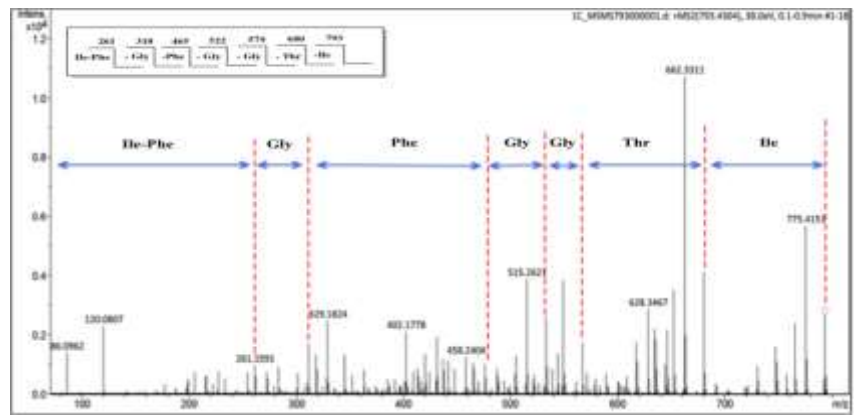
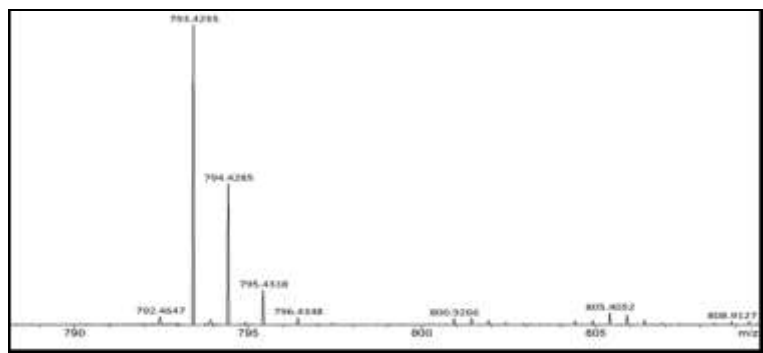


\*e-mail: bolzaniv@iq.unesp.br

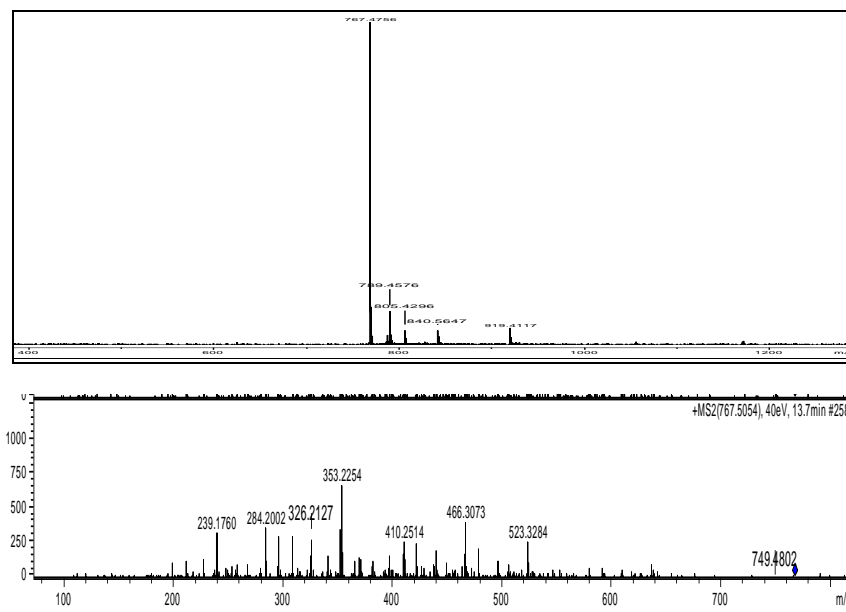
(b) pohlianin B



(c) pohlianin C

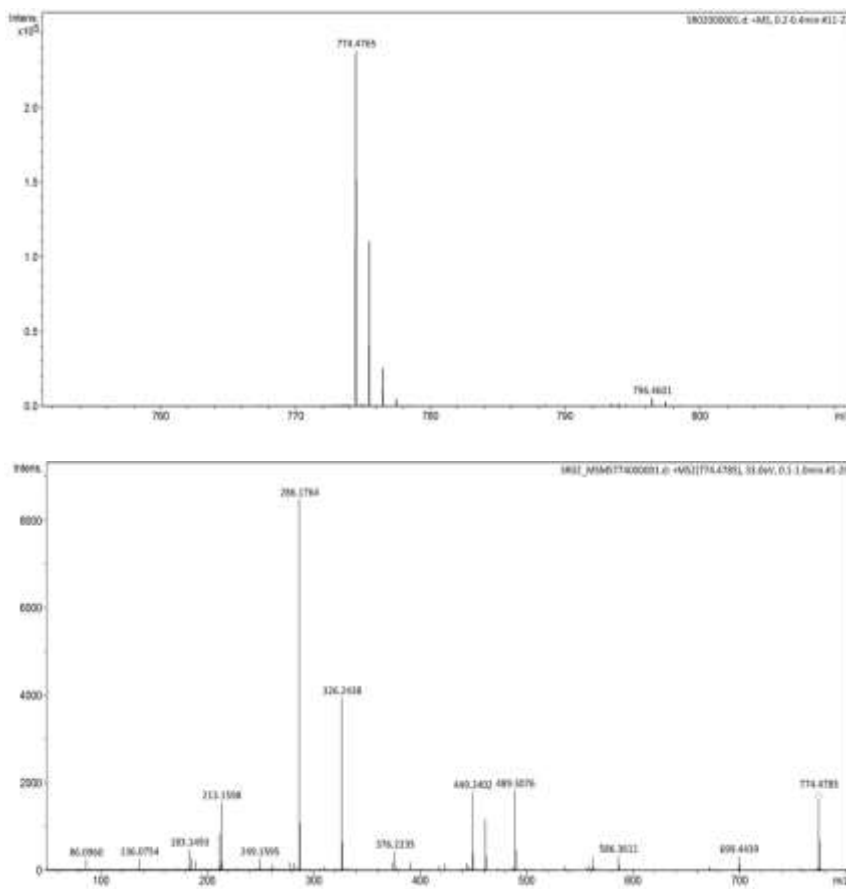


(d) ribifolin

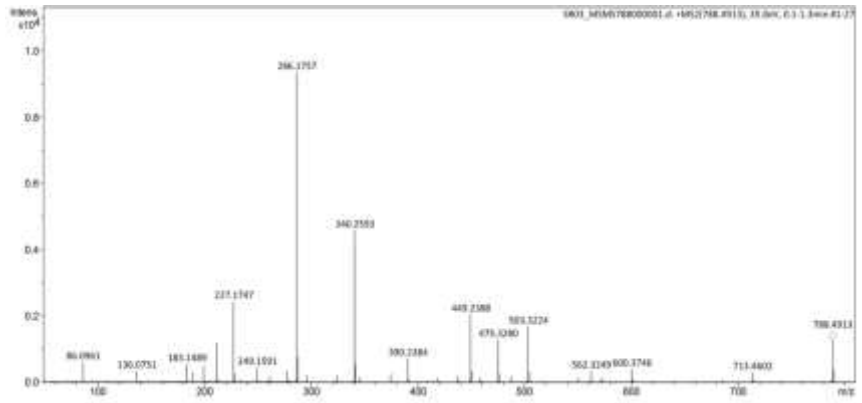
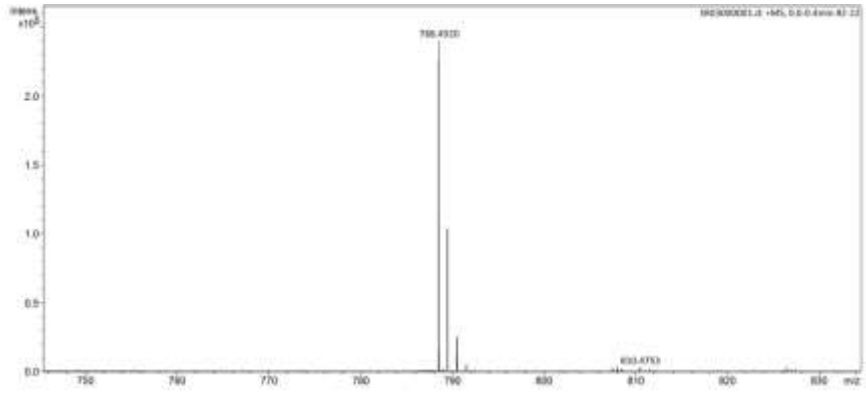


**Figure S1.** Characterization of orbitides. ESI-MS and ESI-IT-MS/MS spectra in positive mode of (a) pohlianin A (**1**), (b) pohlianin B (**2**), (c) pohlianin C (**3**) and (d) ribifolin (**4**).

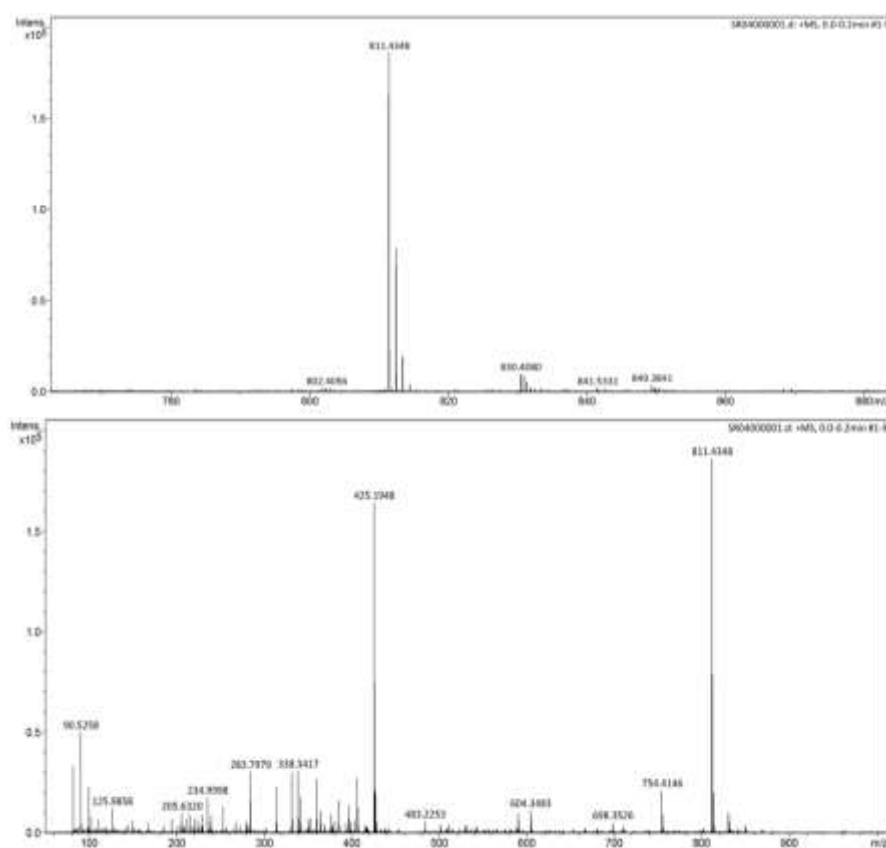
(a) linear pohlianin A



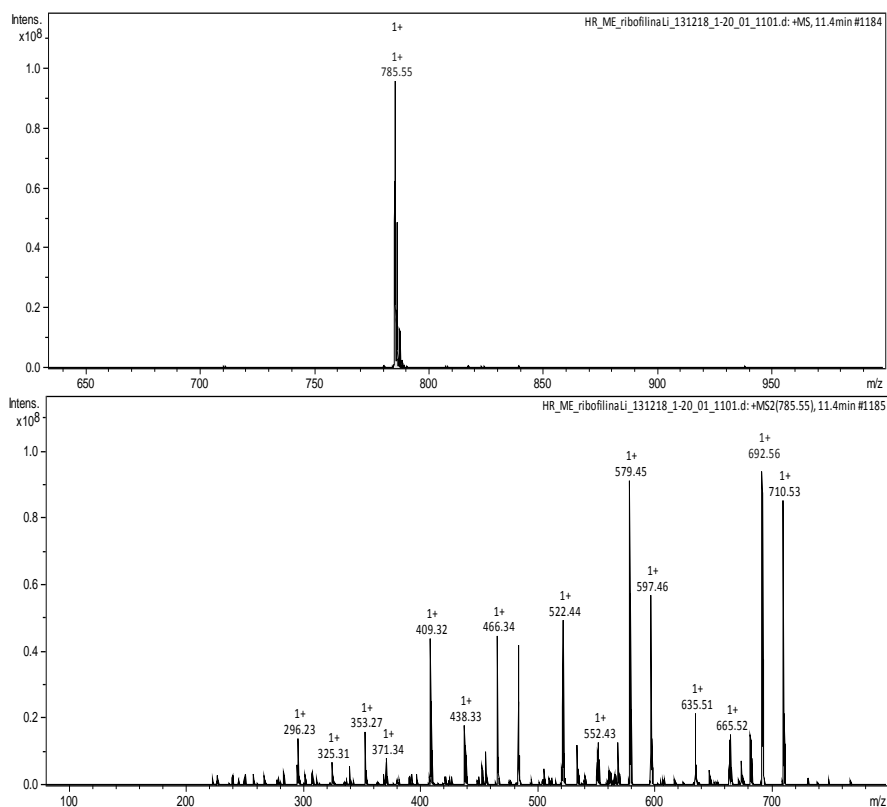
(b) linear pohlianin B



(c) linear pohlianin C



(d) linear ribifolin



**Figure S2.** Characterization of synthetic linear peptides. ESI-MS and ESI-IT-MS/MS spectra in positive mode of (a) linear pohlianin A (**1a**), (b) linear pohlianin B (**2a**), (c) linear pohlianin C (**3a**) and (d) linear ribifolin (**4a**).

**Table S1.** Cytotoxic evaluation (MTS tetrazolium assay) of linear pohlianin B (**2a**) and linear ribifolin (**4a**) on neonatal human foreskin fibroblasts (HFF-1)

| Peptide            | Incubation time / h | Concentration / $\mu\text{M}$ | Cells viability / % |
|--------------------|---------------------|-------------------------------|---------------------|
| Linear ribifolin   | 24                  | 20                            | 89                  |
| Linear ribifolin   | 24                  | 1                             | 7                   |
| Linear ribifolin   | 72                  | 20                            | 77                  |
| Linear ribifolin   | 72                  | 1                             | 80                  |
| Linear pohlianin B | 24                  | 20                            | 78                  |
| Linear pohlianin B | 24                  | 1                             | 82                  |
| Linear pohlianin B | 72                  | 20                            | 65                  |
| Linear pohlianin B | 72                  | 1                             | 69                  |
| Only HFF-1 cell    | 72                  | –                             | 100                 |