

## Study of C- and O-glycosylflavones in Sugarcane Extracts using Liquid Chromatography - Exact Mass Measurement Mass Spectrometry

Renata Colombo,<sup>a</sup> Janete H. Yariwake\*<sup>a</sup> and Michael McCullagh<sup>b</sup>

<sup>a</sup>Instituto de Química de São Carlos, Universidade de São Paulo, CP 780,  
13560-970 São Carlos-SP, Brazil

<sup>b</sup>Waters Corporation, Floats Rd., Wythenshawe, Manchester, M23, 9LZ, UK

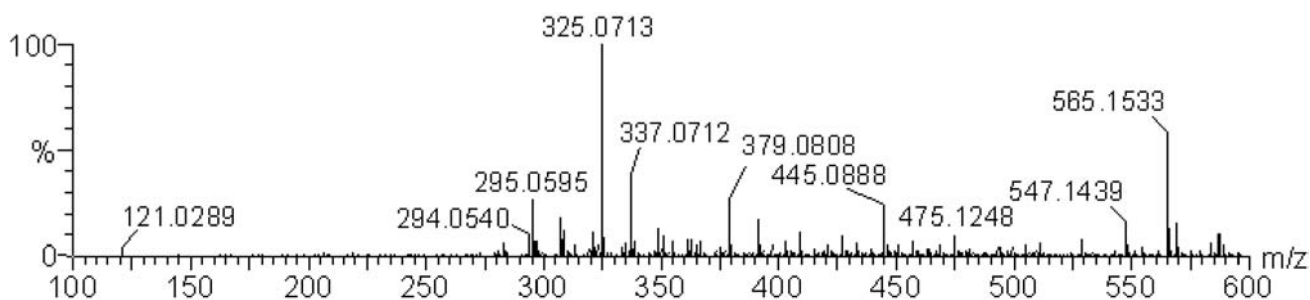


Figure S1. ESI-oe-ToF MS spectra (95V) of 1, schaftoside (see also Table 3).

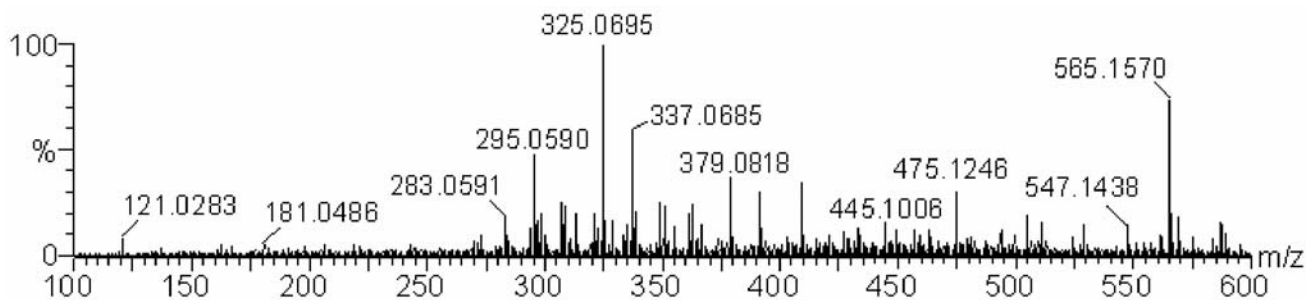


Figure S2. ESI-oe-ToF MS spectra (95V) of 2, isoschaftoside (see also Table 3).

\*e-mail: janete@iqsc.usp.br

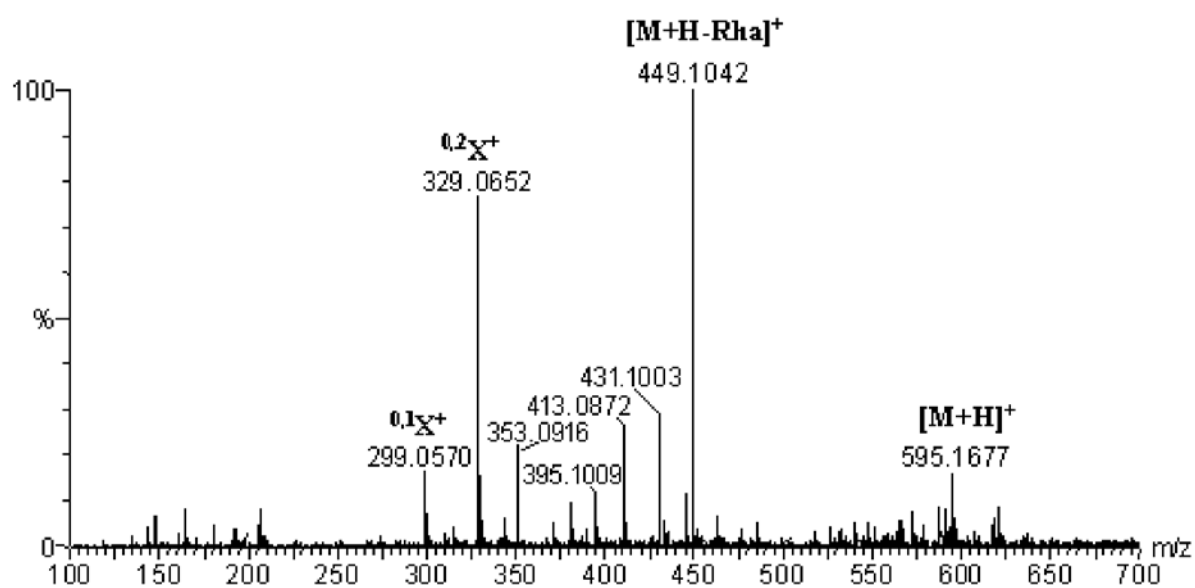


Figure S3. ESI-MS spectra (65 V) of 3, luteolin-8-C-(rhamnosylglucoside).

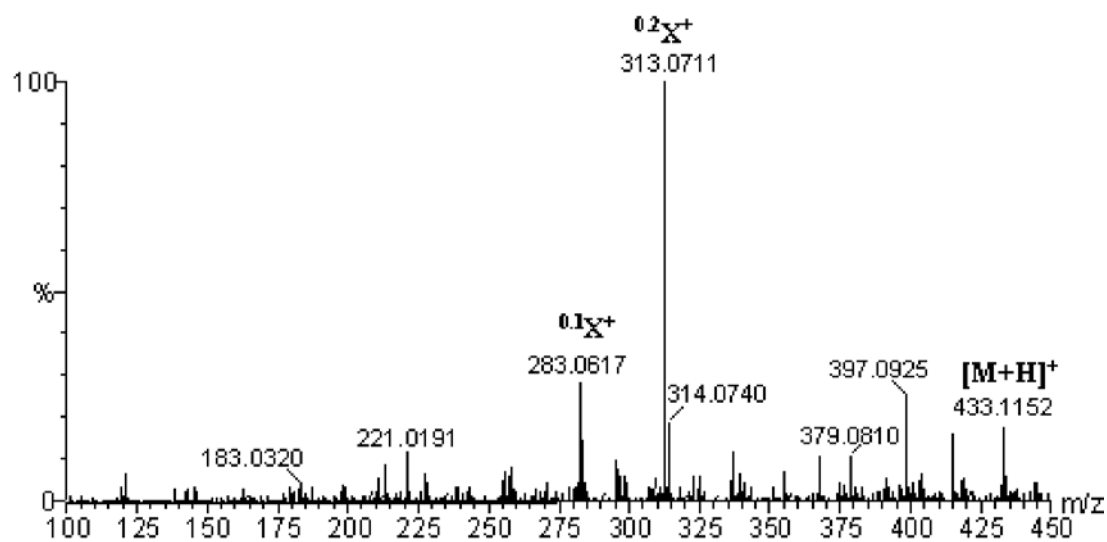


Figure S4. ESI-MS spectra (65 V) of 4, vitexin (R=H).

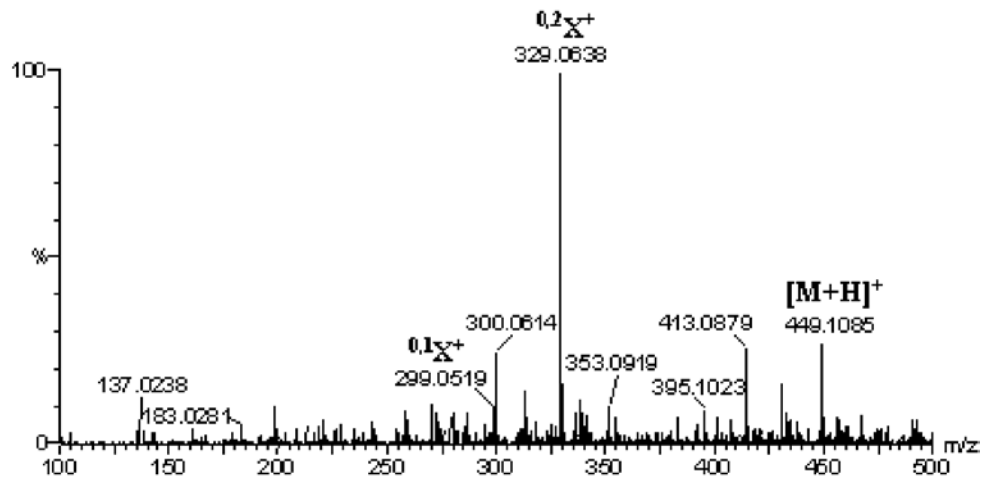


Figure S5. ESI-*oa*-ToF MS spectra (65 V) of **5**, orientin (R=OH).

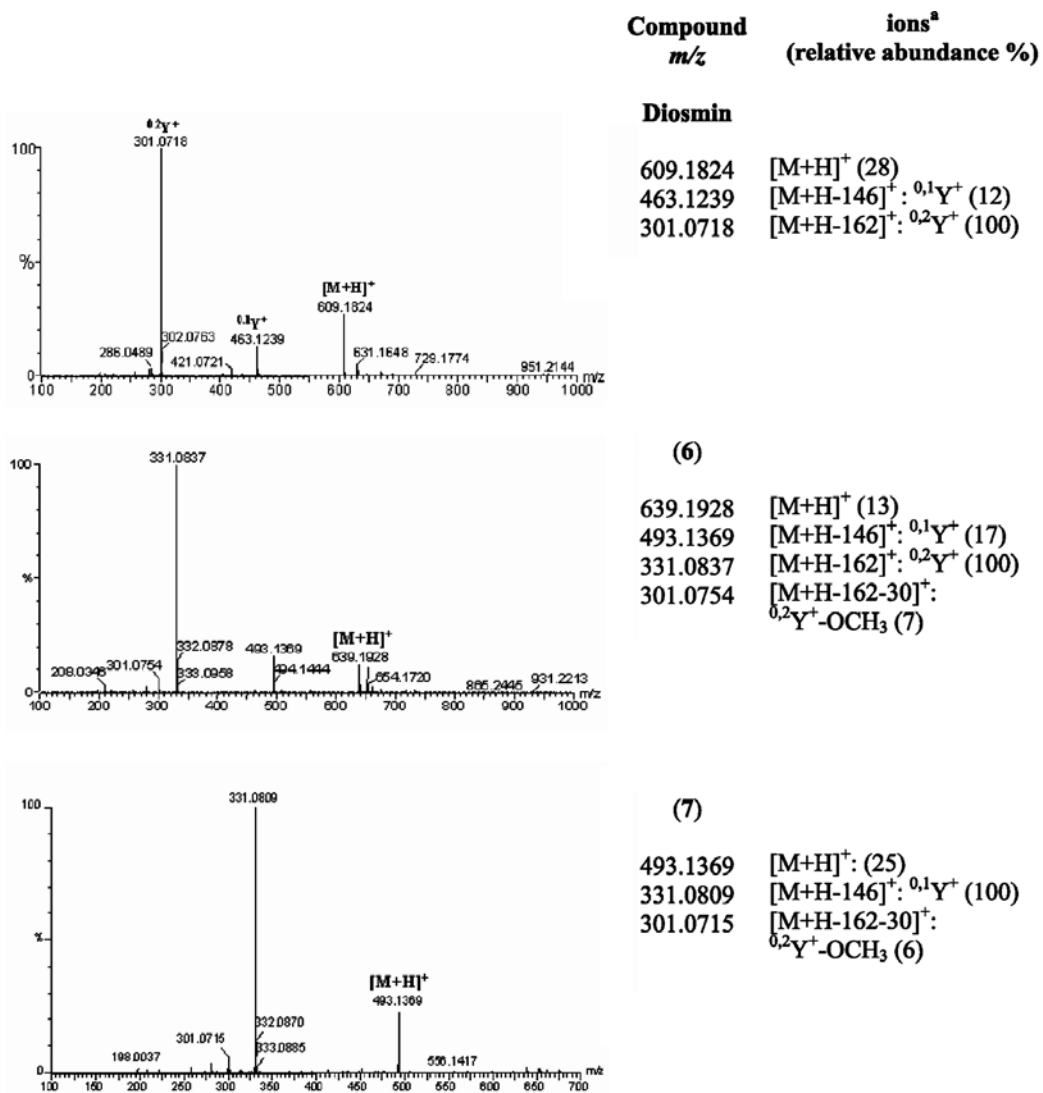


Figure S6. ESI-*oa*-ToF MS spectra (65 V) of 7-*O*-glycosides: **diosmin** (commercial standard); **6**, tricrin-7-*O*-neohesperidoside; **7**, tricrin-7-*O*-glucoside.

<sup>a</sup>Nomenclature of the fragments according to Domon and Costello.<sup>10</sup>