



Chemical Constituents from the Roots of *Spathelia excelsa* and their Antiprotozoal Activity

Wagner A. dos Santos Moreira,^a Maria da Paz Lima,^{*a} Antonio Gilberto Ferreira,^b
Izabel C. Piloto Ferreira^c and Celso V. Nakamura^c

^aCoordenação de Pesquisas em Produtos Naturais, Instituto Nacional de Pesquisas da Amazônia,
CP 478, 69011-970 Manaus-AM, Brazil

^bDepartamento de Química, Universidade Federal de São Carlos, CP 676, 13565 São Carlos-SP, Brazil

^cDepartamento de Análises Clínicas, Universidade Estadual de Maringá, 87020-900 Maringá-PR, Brazil

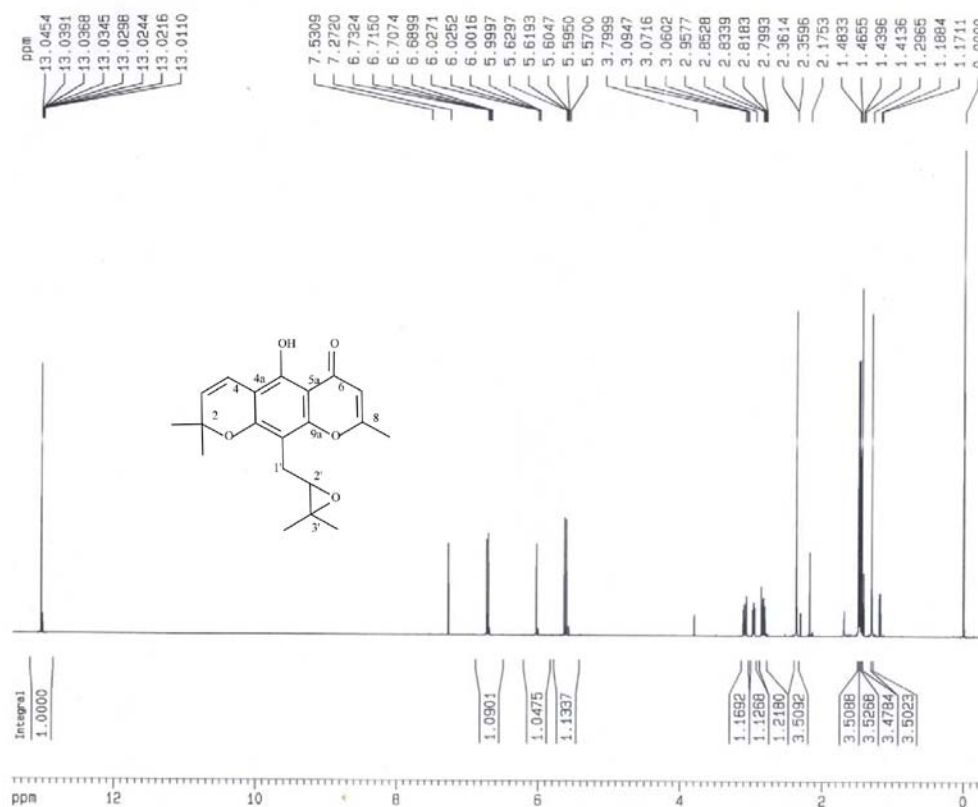


Figure S1. ¹H NMR spectrum (400 MHz, CDCl₃) of 2.

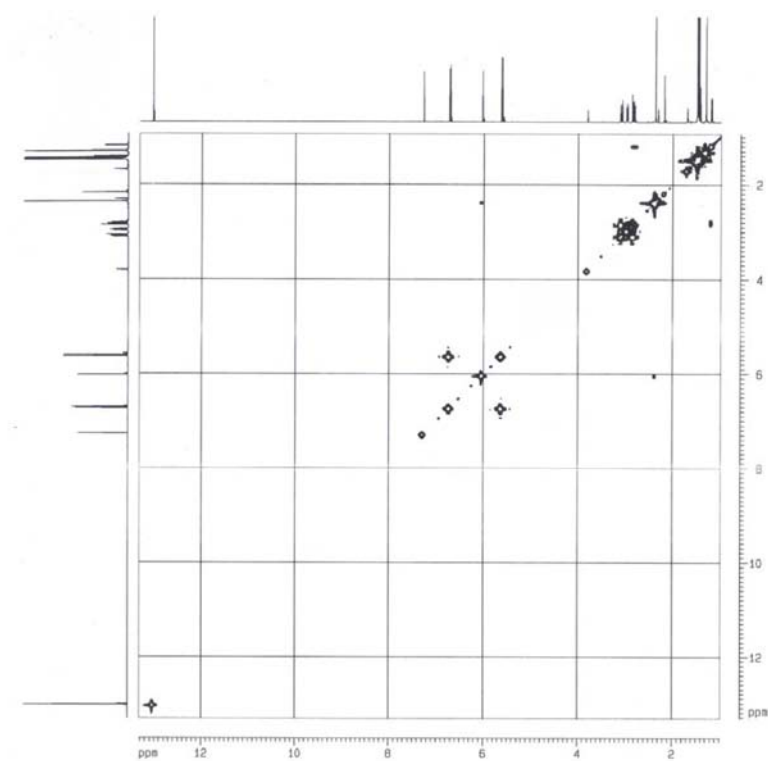


Figure S2. ^1H - ^1H COSY spectrum (400 MHz, CDCl_3) of **2**.

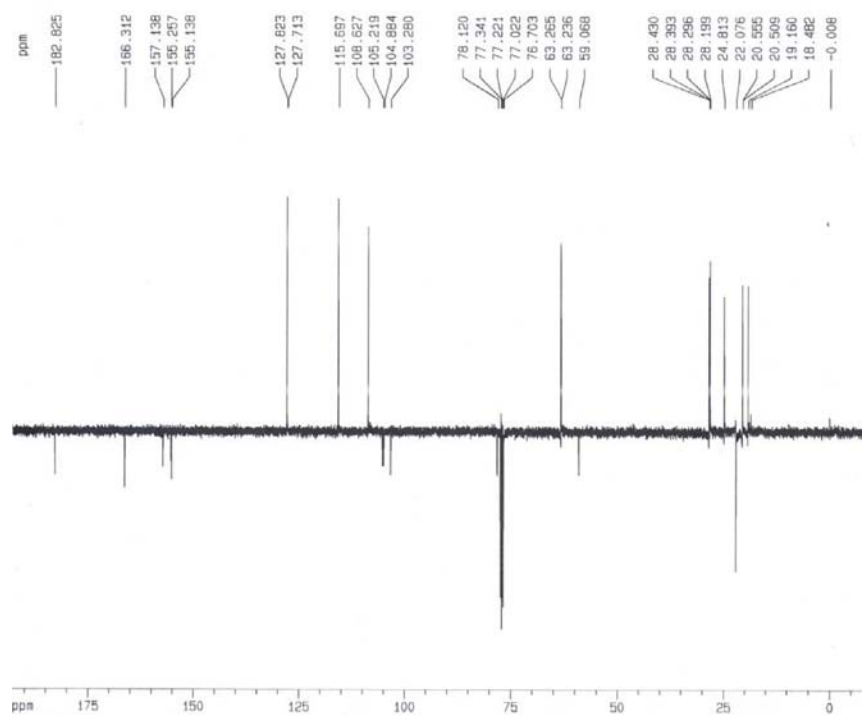


Figure S3. ^{13}C Pendant spectrum (100 MHz, CDCl_3) of **2**.

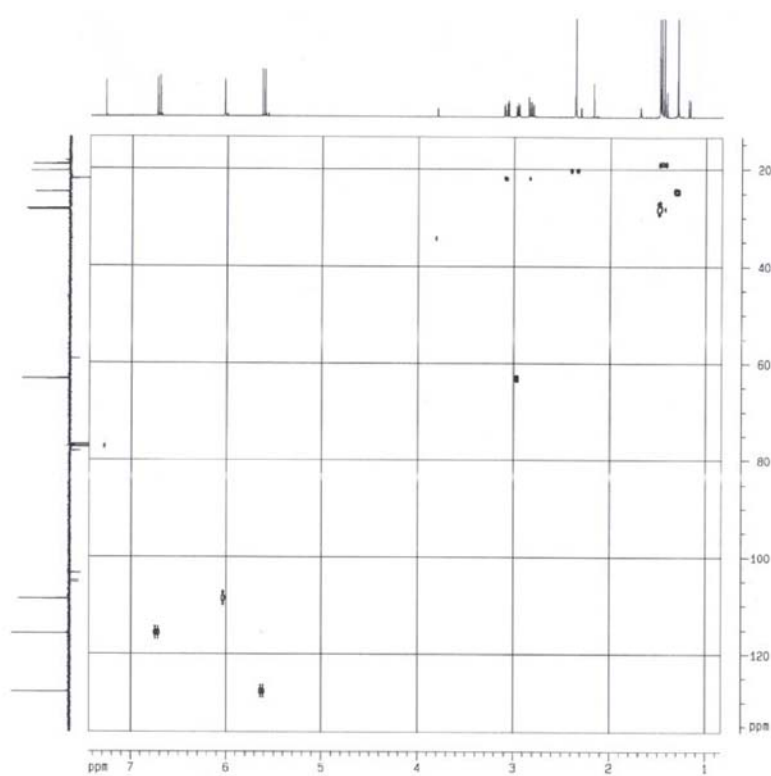


Figure S4. HSQC spectrum (400/100 MHz, CDCl₃) of **2**.

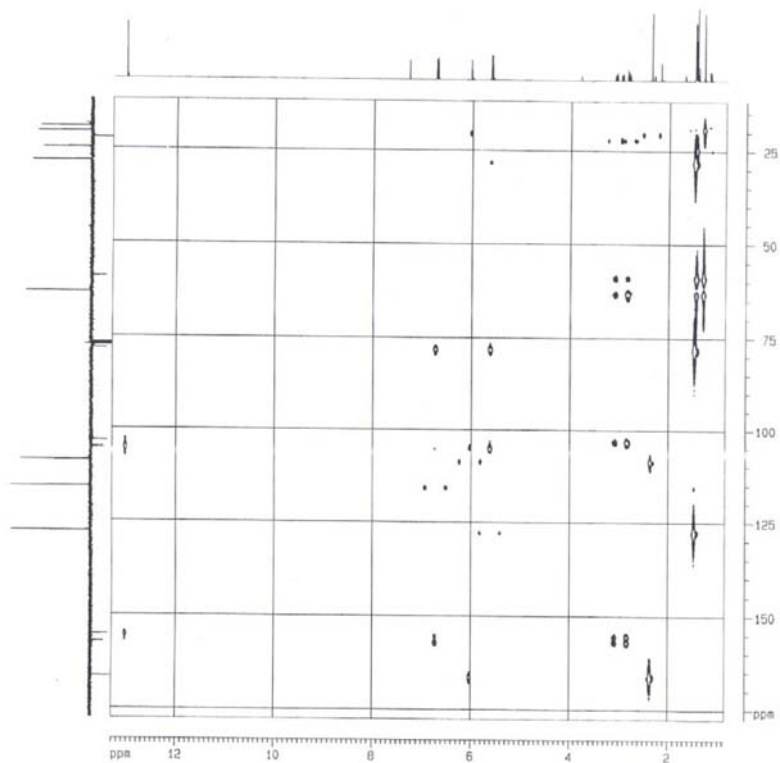


Figure S5. HMBC spectrum (400/100 MHz, CDCl₃) of **2**.

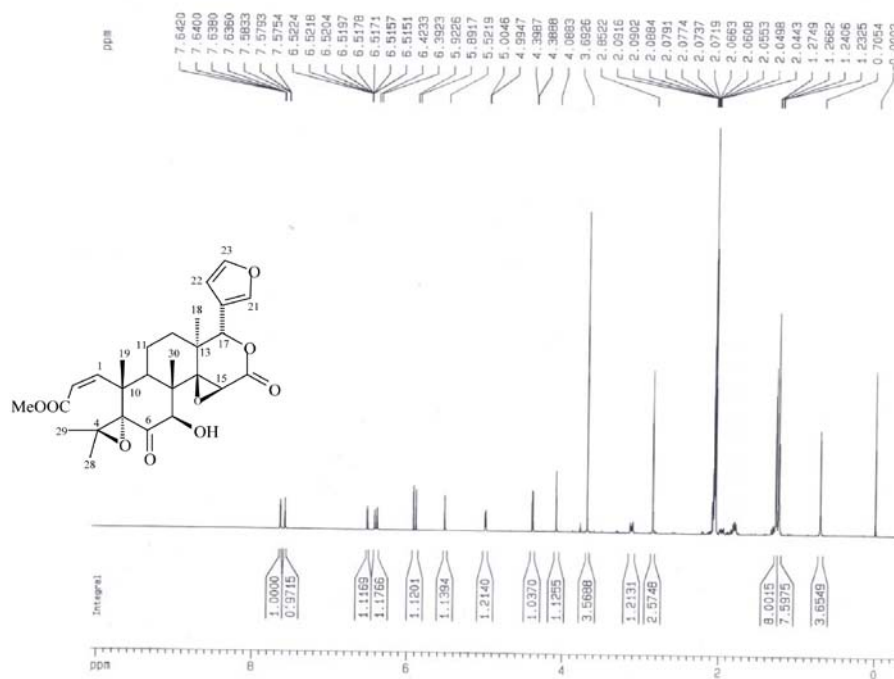


Figure S6. ^1H NMR spectrum [400 MHz (CD_3) $_2\text{CO}$] of **3**.

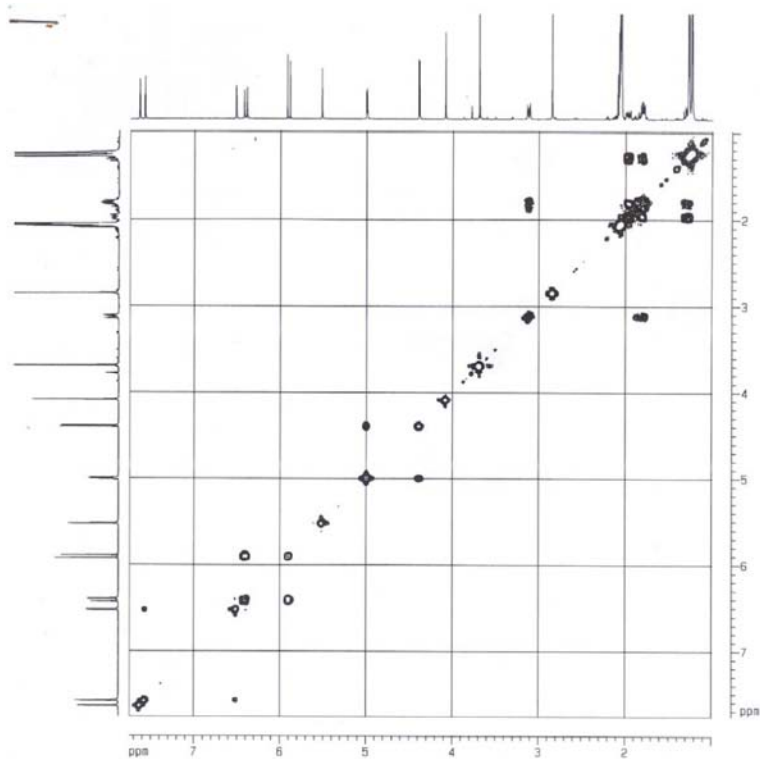


Figure S7. ^1H - ^1H COSY spectrum [400 MHz (CD_3) $_2\text{CO}$] of **3**.

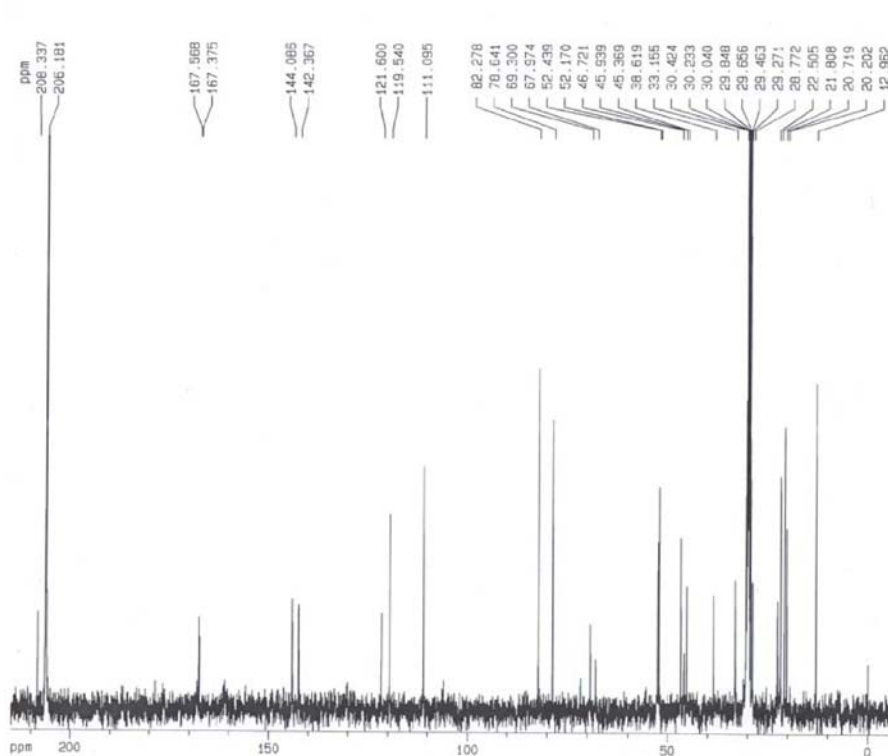


Figure S8. ^{13}C RMN spectrum [100 MHz ($\text{CD}_3)_2\text{CO}$] of 3.

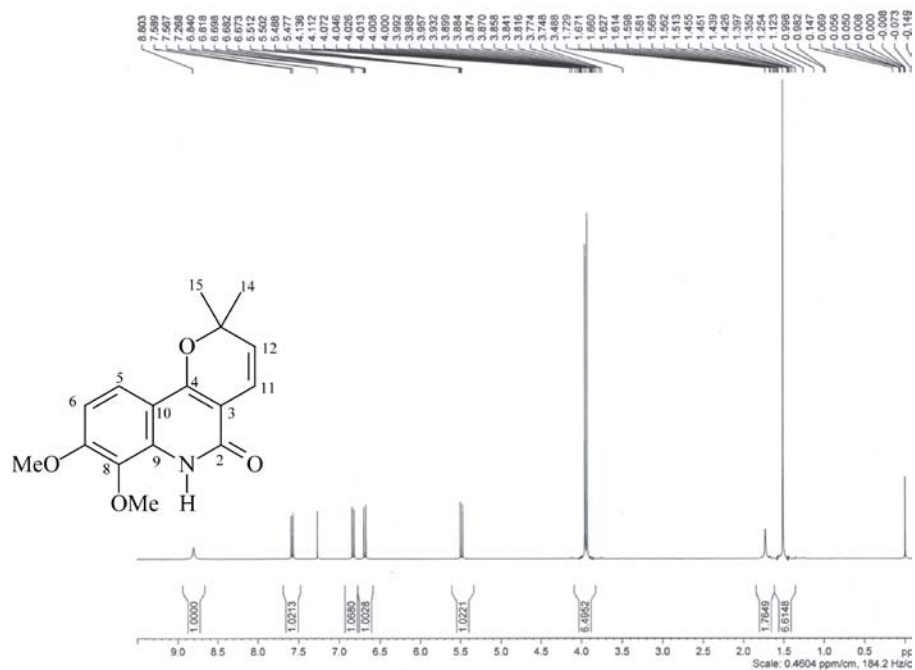


Figure S9. ^1H NMR spectrum (400 MHz, CDCl_3) of 4.

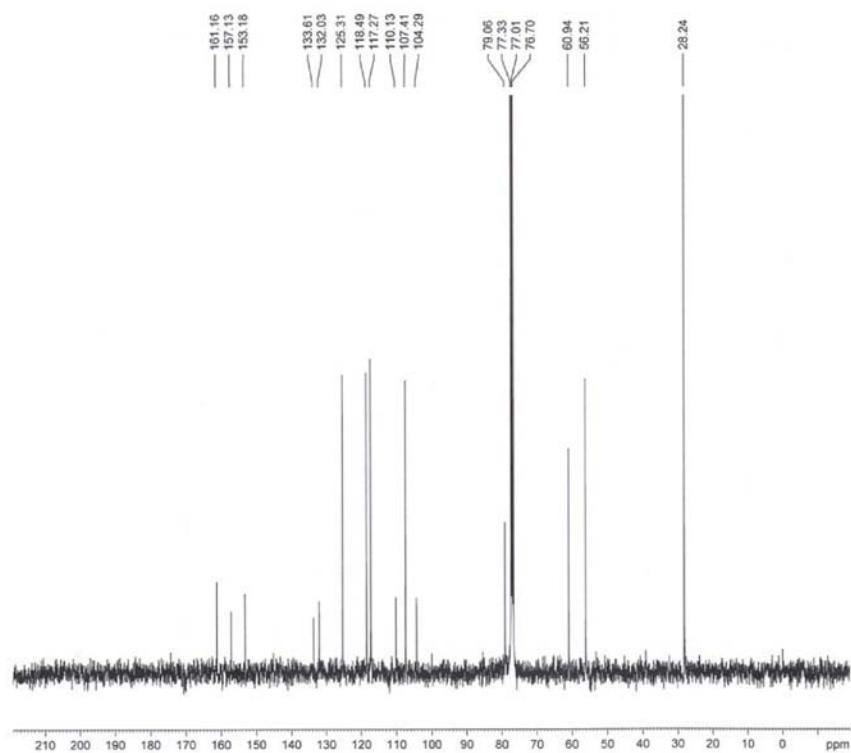


Figure S10. ¹³C NMR spectrum (100 MHz, CDCl₃) of 4.

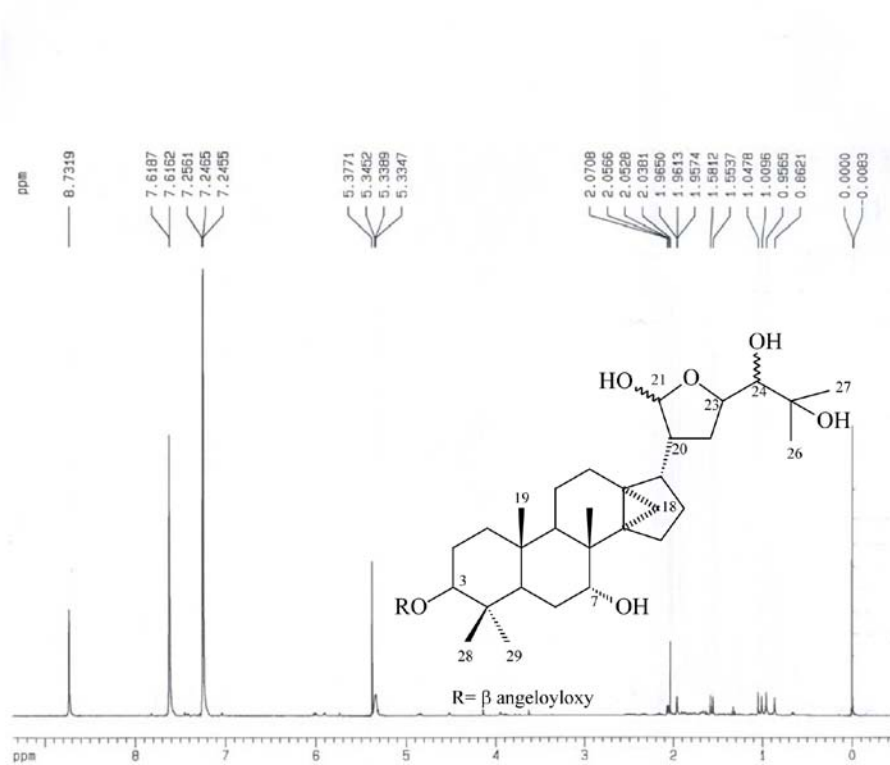


Figure S11. ¹H NMR spectrum (400 MHz, C₃D₃N) of 5.

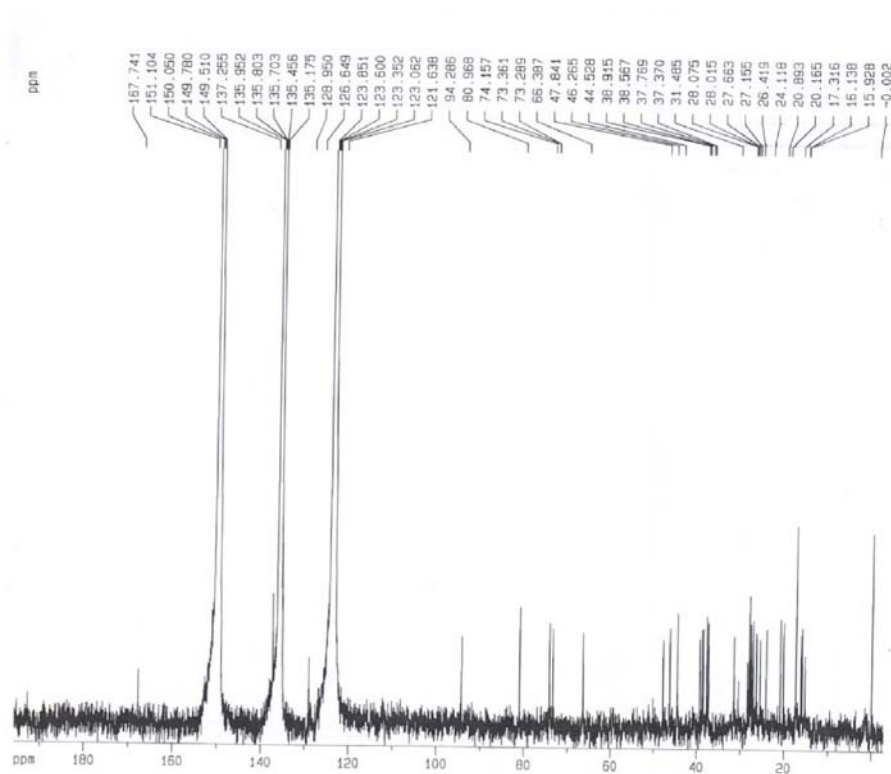


Figure S12. ^1H NMR spectrum (100 MHz, $\text{C}_3\text{D}_5\text{N}$) of **5**.

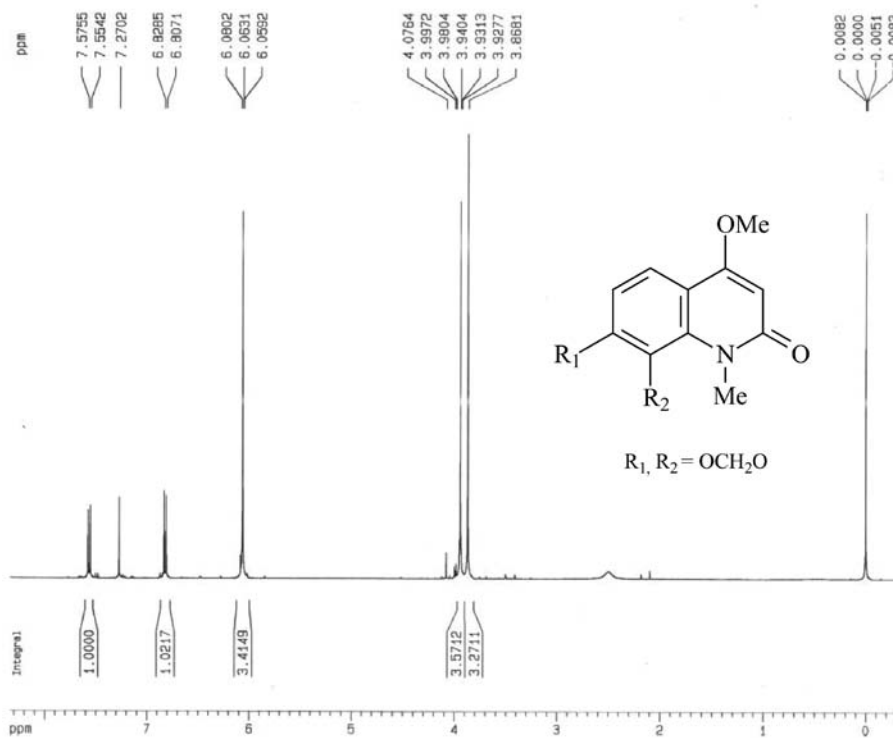


Figure S13. ^1H NMR spectrum (400 MHz, CDCl_3) of **6**.

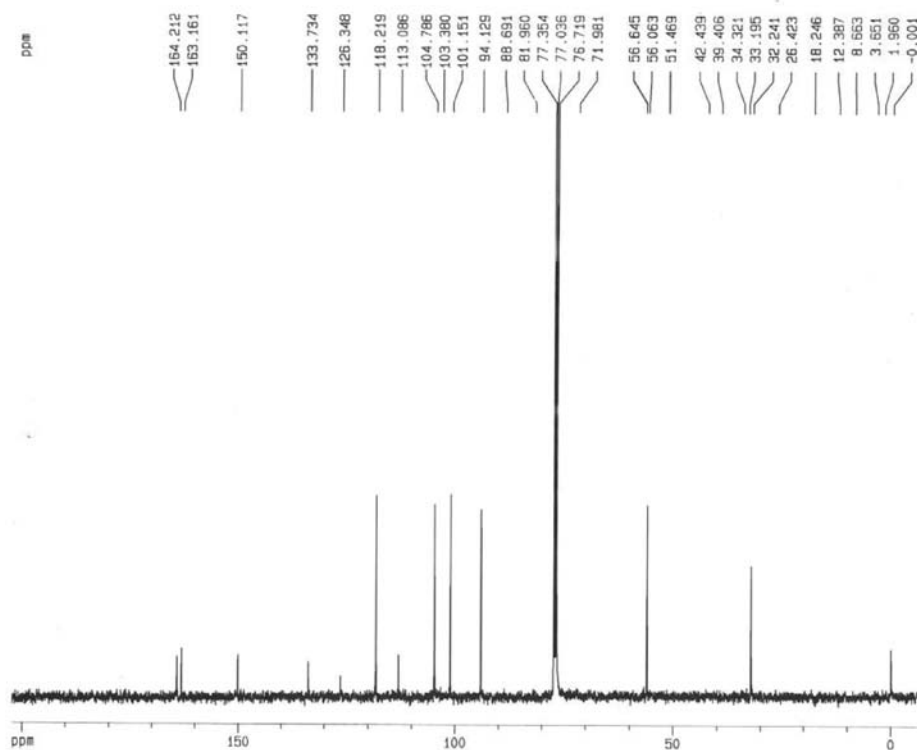


Figure S14. ¹³C NMR spectrum (100 MHz, CDCl₃) of 6.

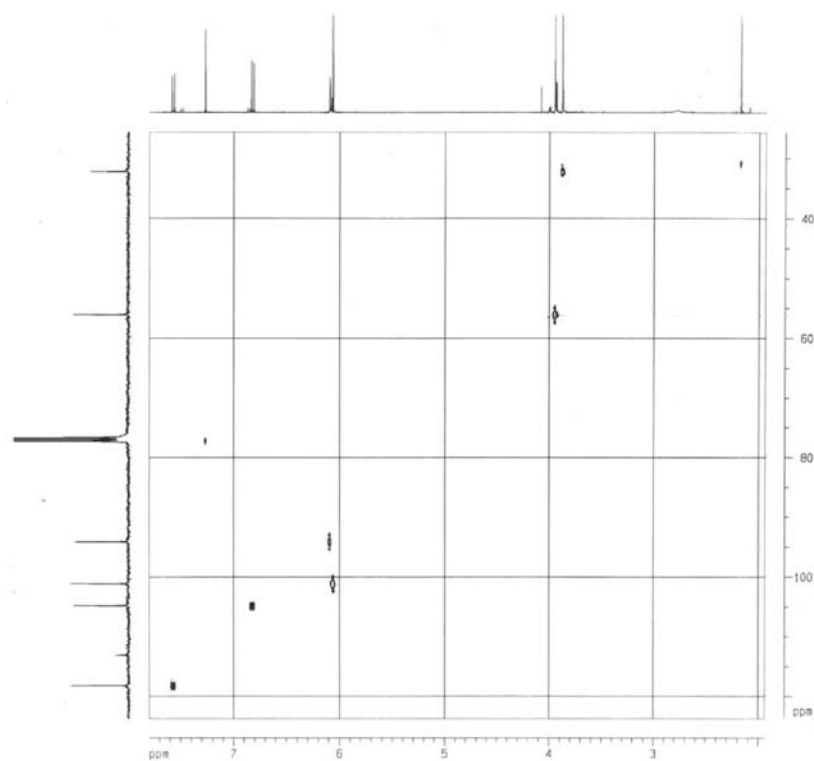


Figure S15. HSQC spectrum (400/100 MHz, CDCl₃) of 6.

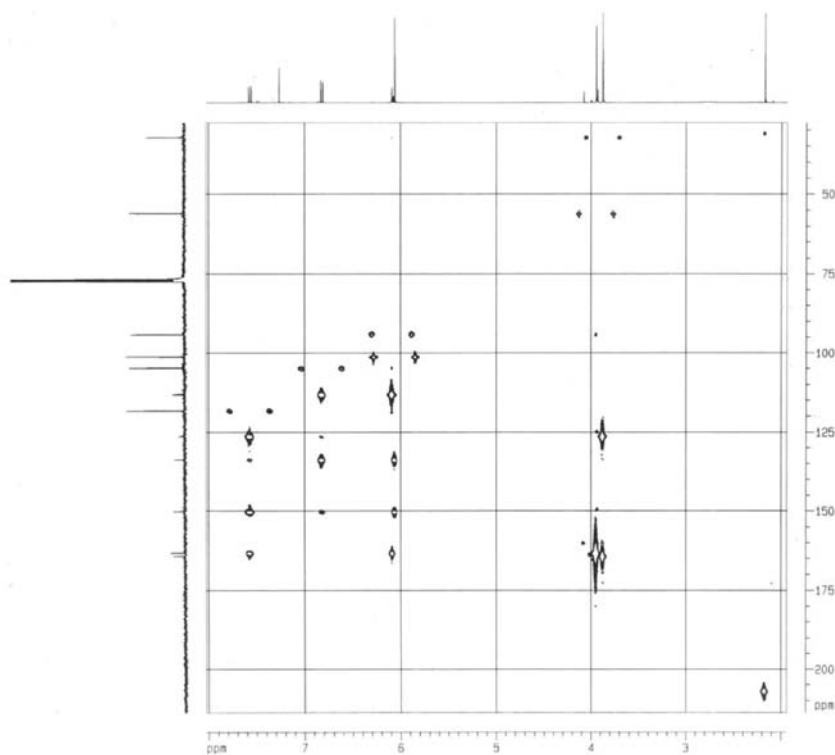


Figure S16. HMBC spectrum (400/100 MHz, CDCl_3) of 6.

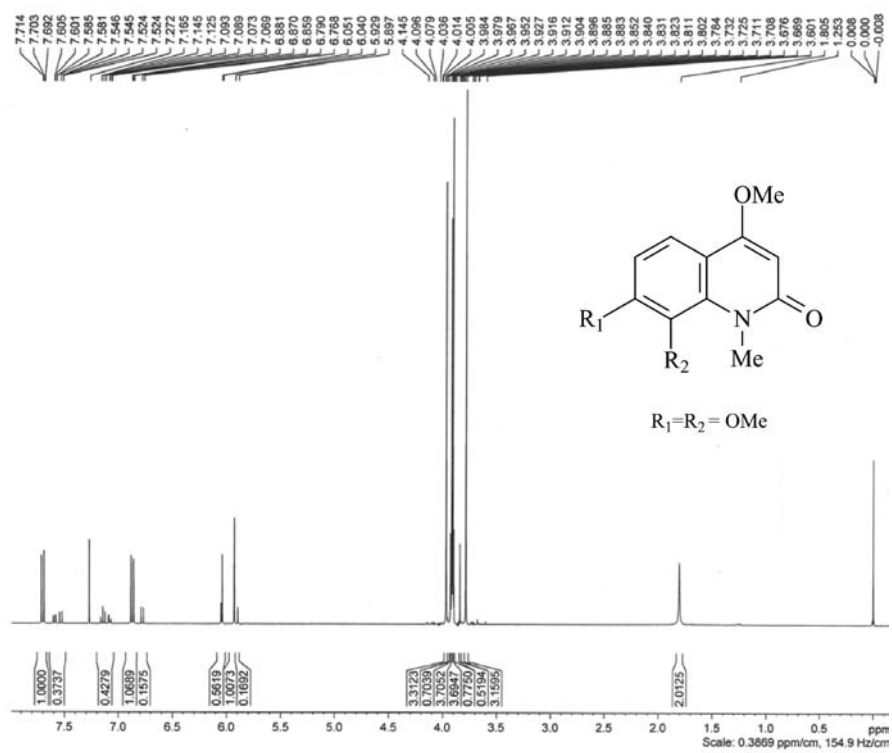


Figure S17. ^1H NMR spectrum (400 MHz, CDCl_3) of 7.

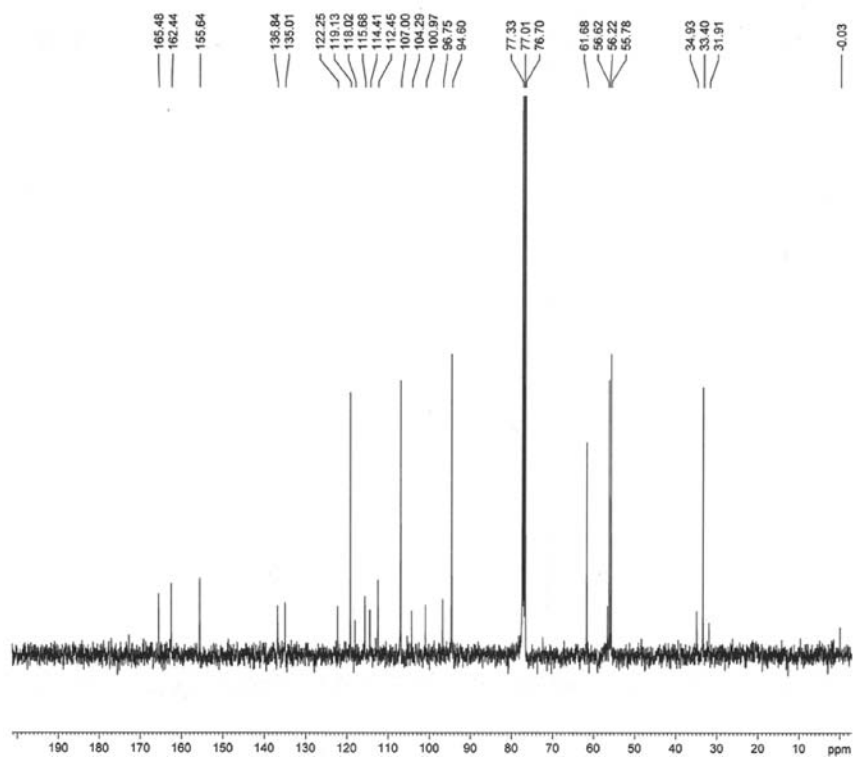


Figure S18. ^{13}C NMR spectrum (100 MHz, CDCl_3) of 7.

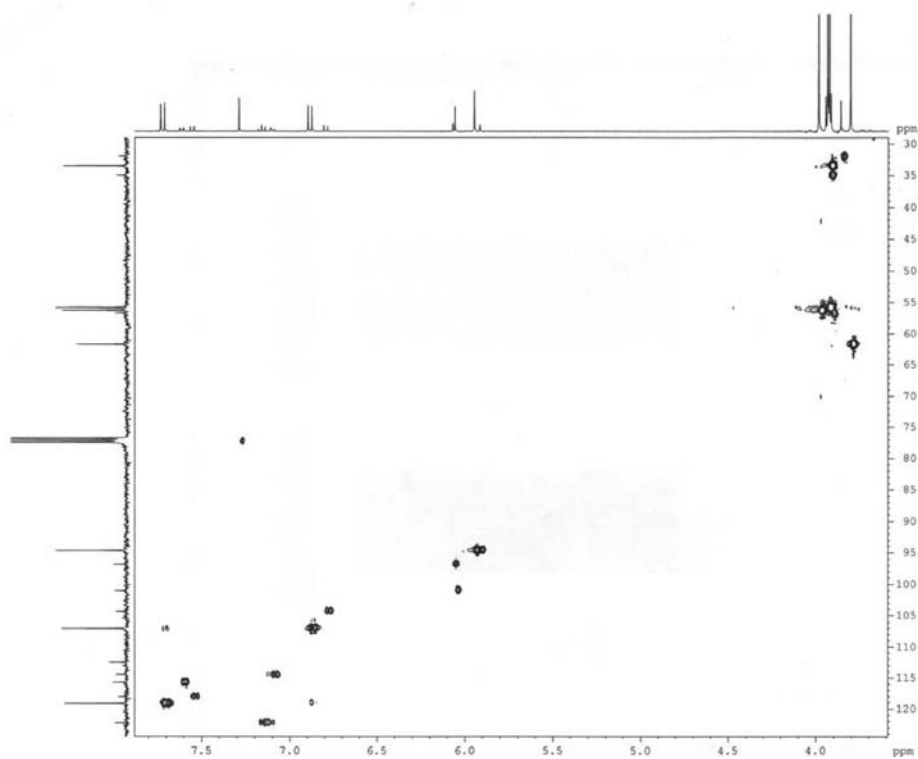


Figure S19. HSQC spectrum (400/100 MHz, CDCl_3) of 7.

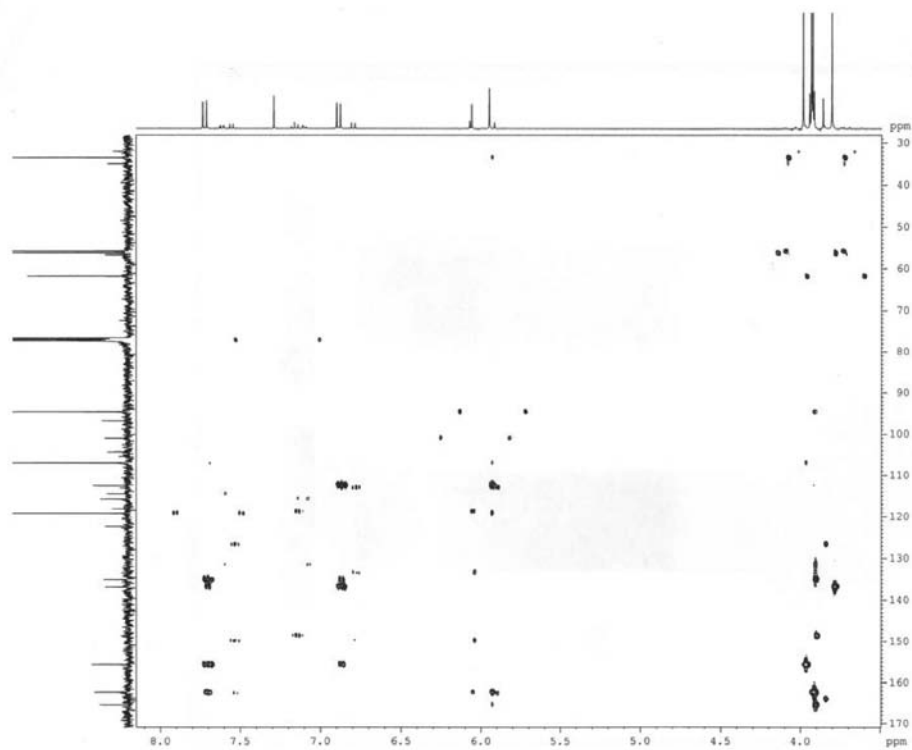


Figure S20. HMBC spectrum (400/100 MHz, CDCl_3) of **7**.

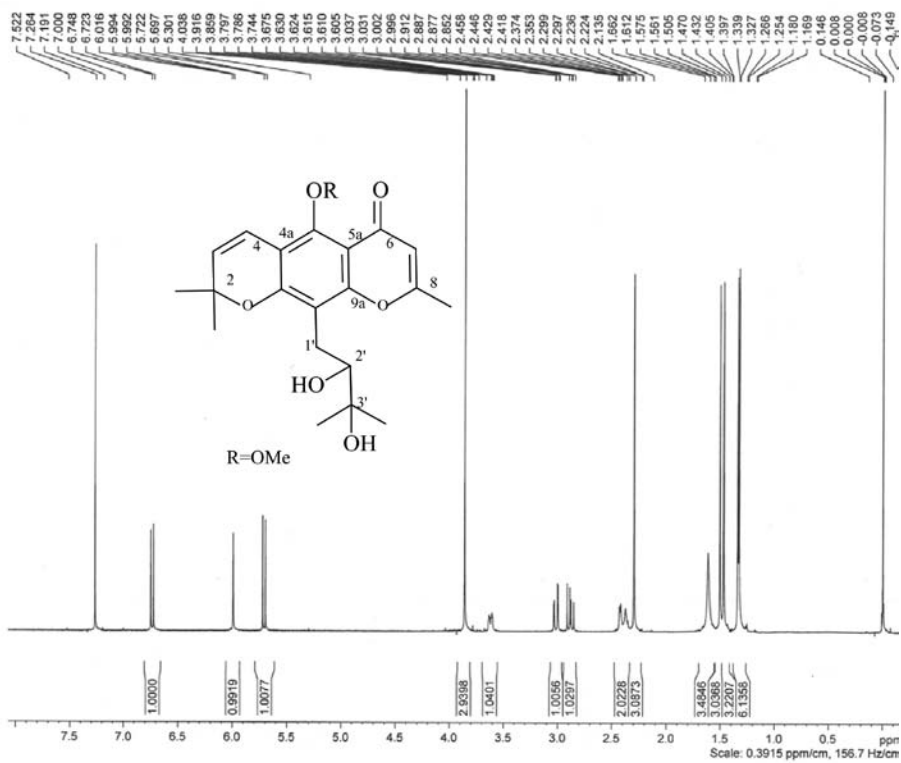


Figure S21. ^1H NMR spectrum (400 MHz, CDCl_3) of **8**.

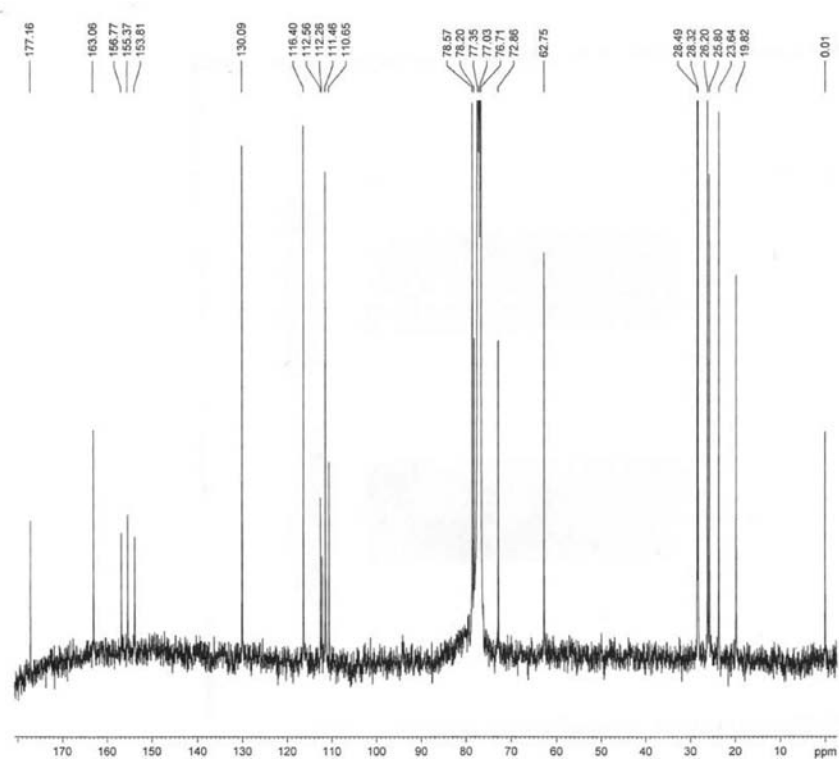


Figure S22. ^{13}C NMR spectrum (100 MHz, CDCl_3) of **8**.

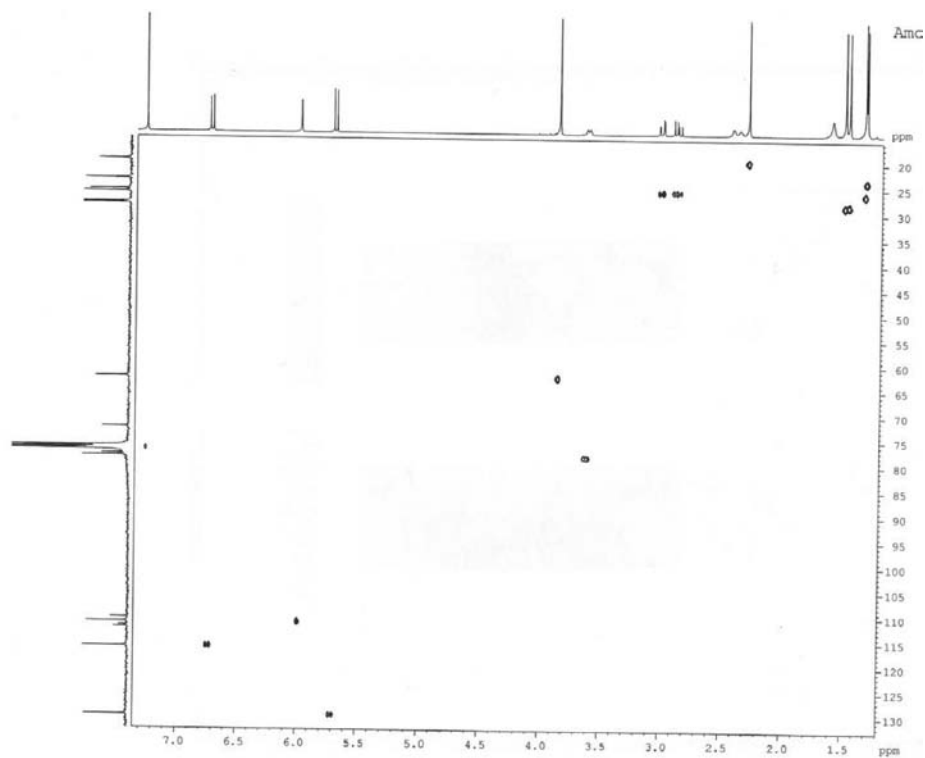


Figure S23. HSQC spectrum (400/100 MHz, CDCl_3) of **8**.

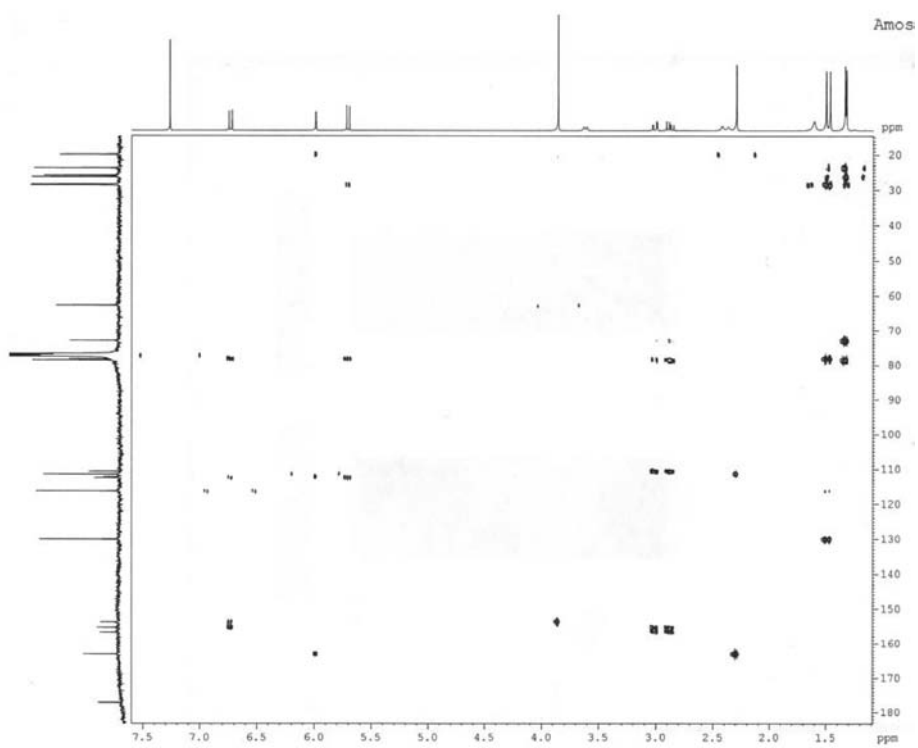


Figure S24. HMBC spectrum (400/100 MHz, CDCl₃) of **8**.