



Condensed Tannins from the Bark of *Guazuma ulmifolia* Lam. (Sterculiaceae)

Gisely C. Lopes,^a Juliana C. B. Rocha,^a Glalber C. de Almeida^b and João C. P. de Mello^{*,a}

^aPrograma de Pós-graduação em Ciências Farmacêuticas, Universidade Estadual de Maringá,
Av. Colombo, 5790, 87020-900 Maringá-PR, Brazil

^bAcadêmico de Farmácia, Universidade Estadual de Maringá, Av. Colombo, 5790, 87020-900 Maringá-PR, Brazil

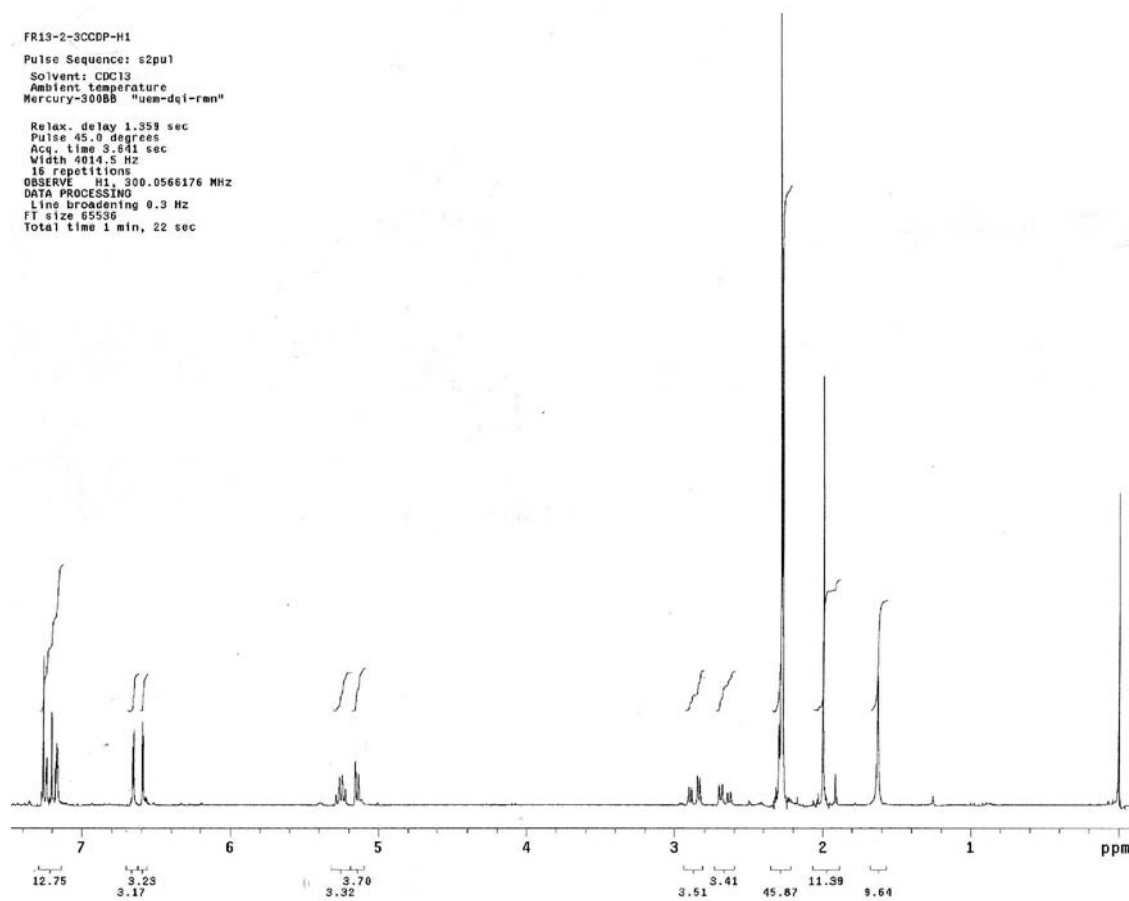
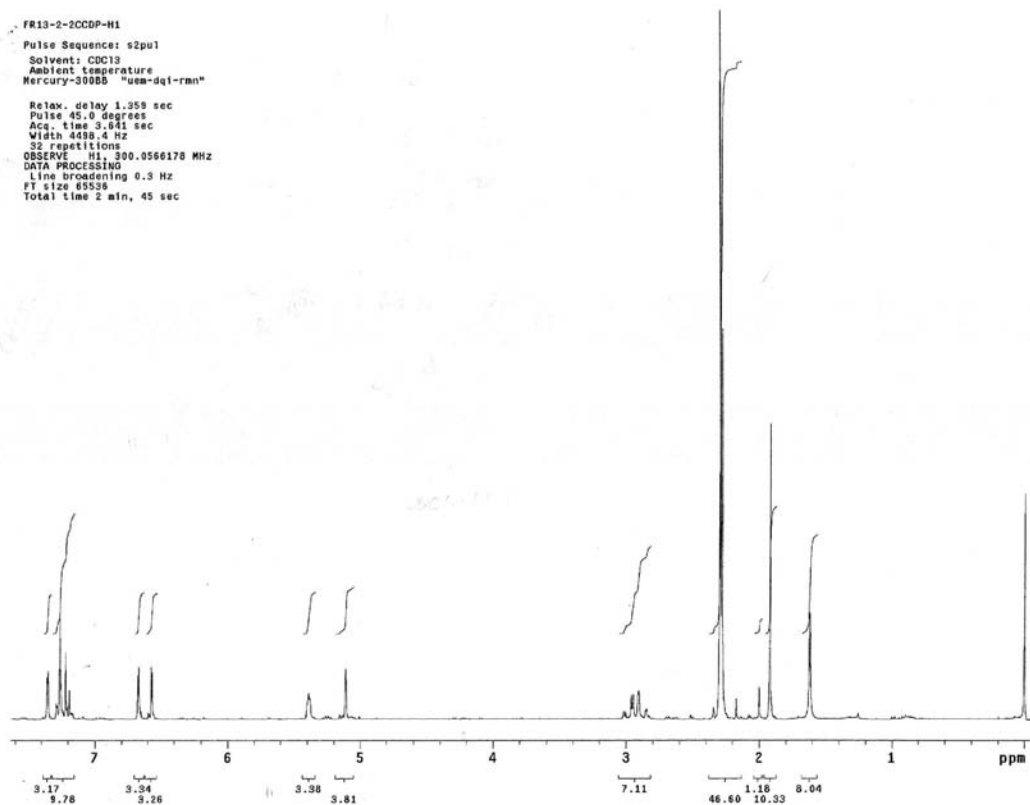
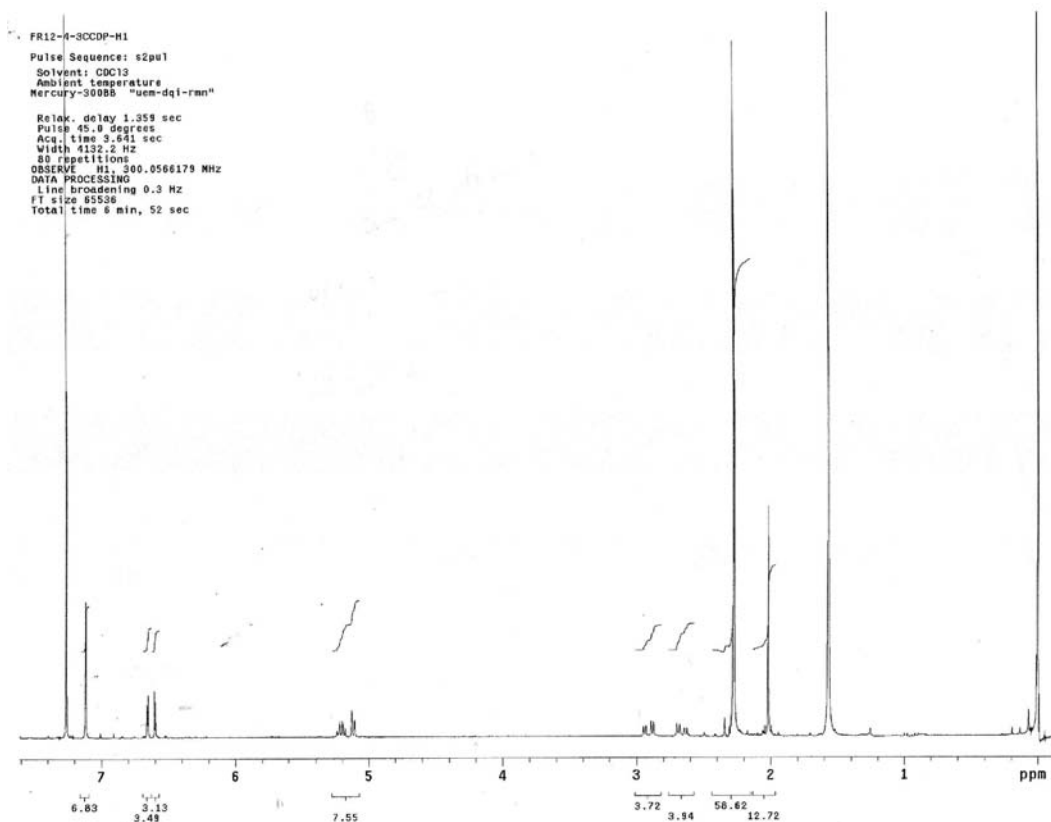


Figure S1. ¹H NMR spectrum of *ent*-catechin.

*e-mail: mello@uem.br

Figure S2. ¹H NMR spectrum of epicatechin.Figure S3. ¹H NMR spectrum of *ent*-gallocatechin.

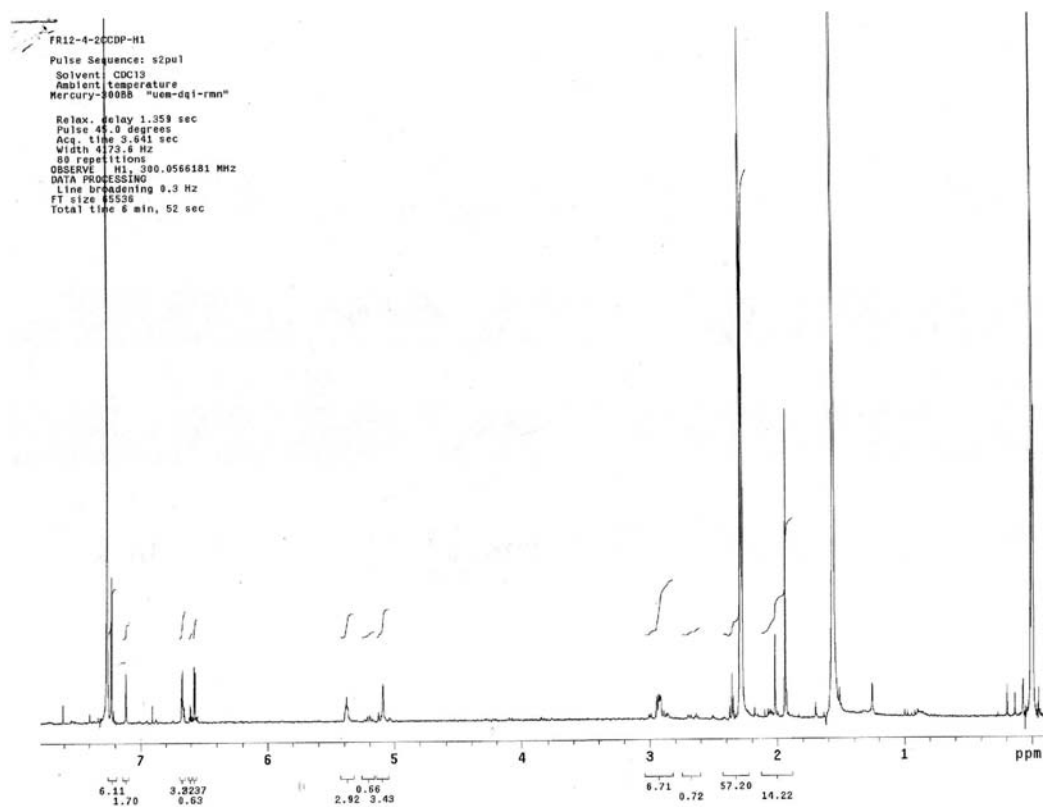


Figure S4. ¹H NMR spectrum of epigallocatechin.

kb_mu142_230904_298k_1h
500 MHz

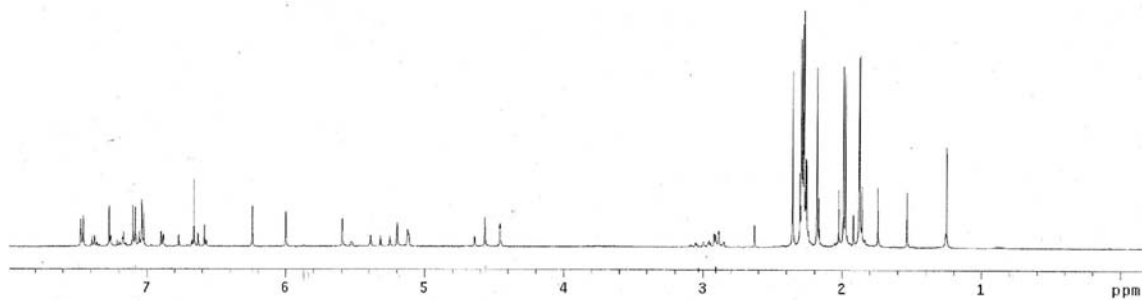


Figure S5. ¹H NMR spectrum of epiafzelechin-(4 β →8)-epicatechin.

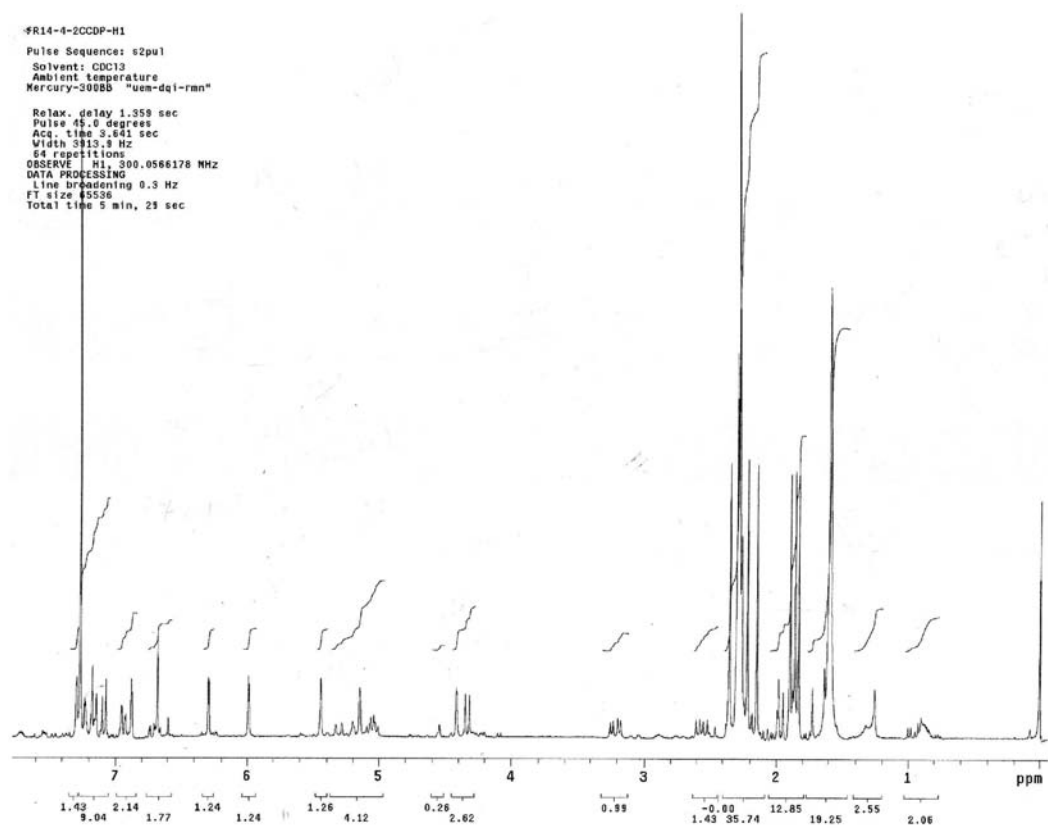


Figure S6. ¹H NMR spectrum of epicatechin-(4β→8)-catechin.

kb_mu143_230904_298k_1h
500 MHz

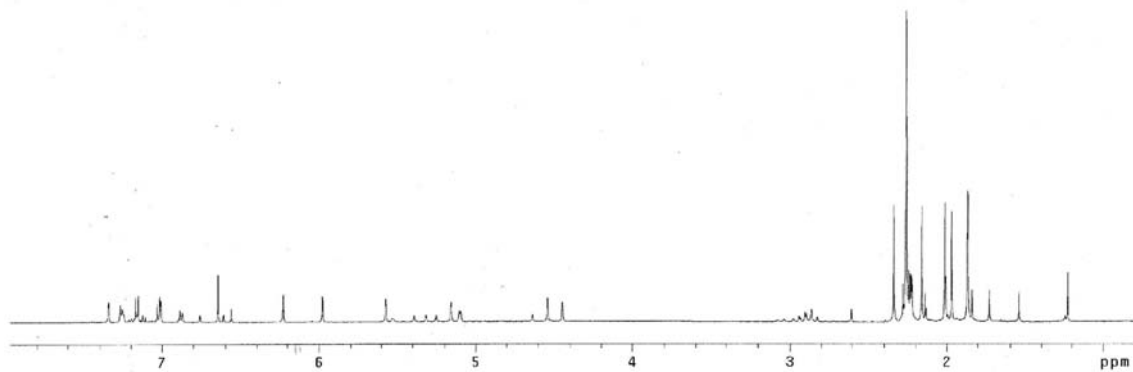


Figure S7. ¹H NMR spectrum of epicatechin-(4β→8)-epicatechin.

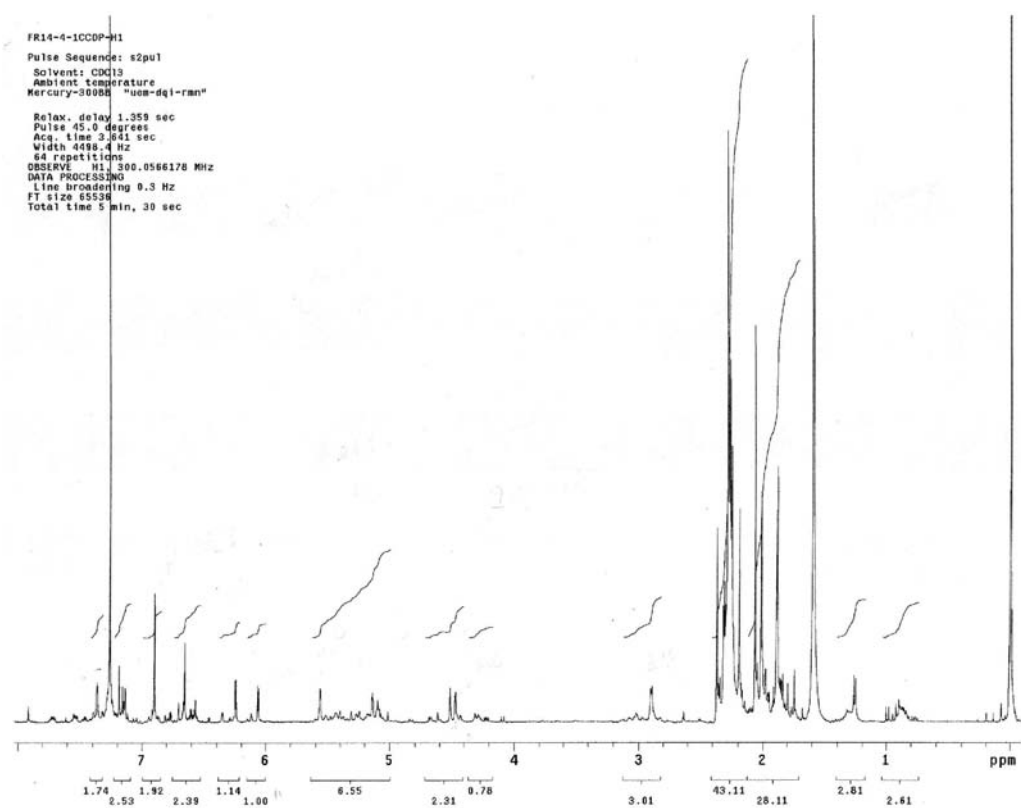


Figure S8. ¹H NMR spectrum of epicatechin-(4β→8)-epigallocatechin.

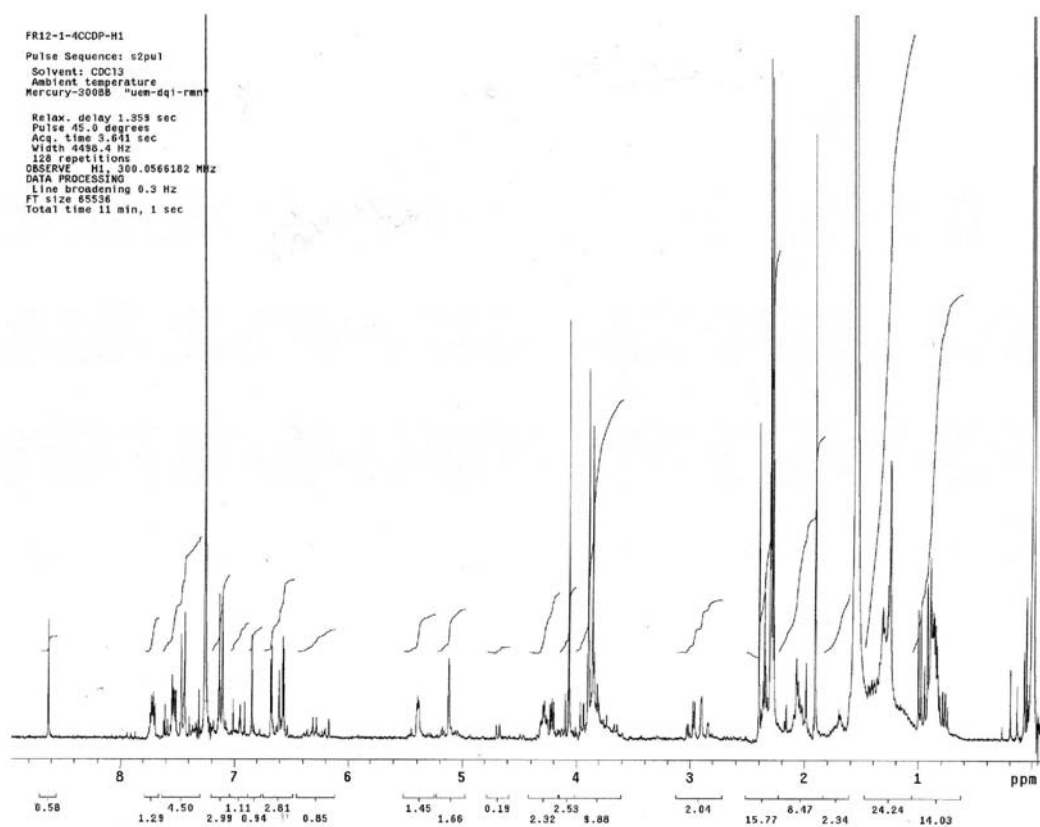


Figure S9. ¹H NMR spectrum of 4'-O-methyl-epiafzelechin.