

New Coumarins from *Clausena lansium* Twigs

Wisanu Maneerat,^a Uma Prawat,^b Nisakorn Saewan^c and Surat Laphookhieo^{*a}

^aNatural Products Research Laboratory, School of Science, Mae Fah Luang University, Tasud, Muang, 57100 Chiang Rai, Thailand

^bFaculty of Science and Technology, Phuket Rajabhat University, Muang, 83000 Phuket, Thailand

^cSchool of Cosmetic Science, Mae Fah Luang University, Tasud, Muang, 57100 Chiang Rai, Thailand

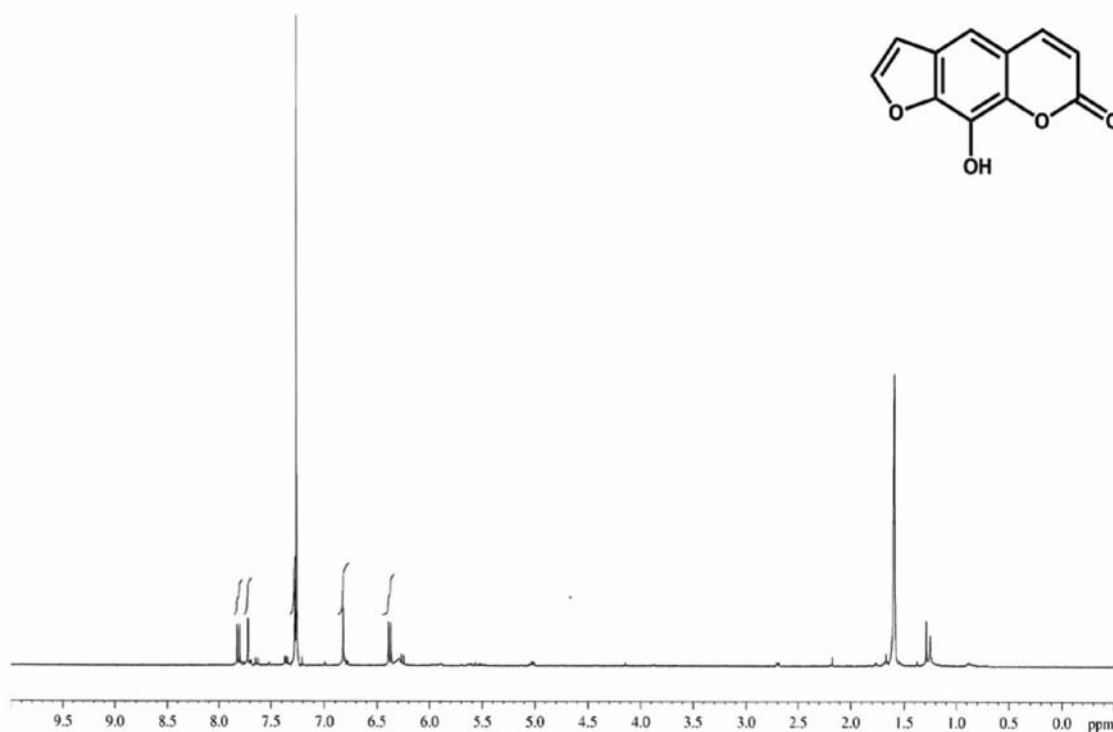


Figure S1. ¹H NMR spectrum of xanthotoxol (**1**) (400 MHz, CDCl₃).

*e-mail: surat@mfu.ac.th; laphookhieo@yahoo.com

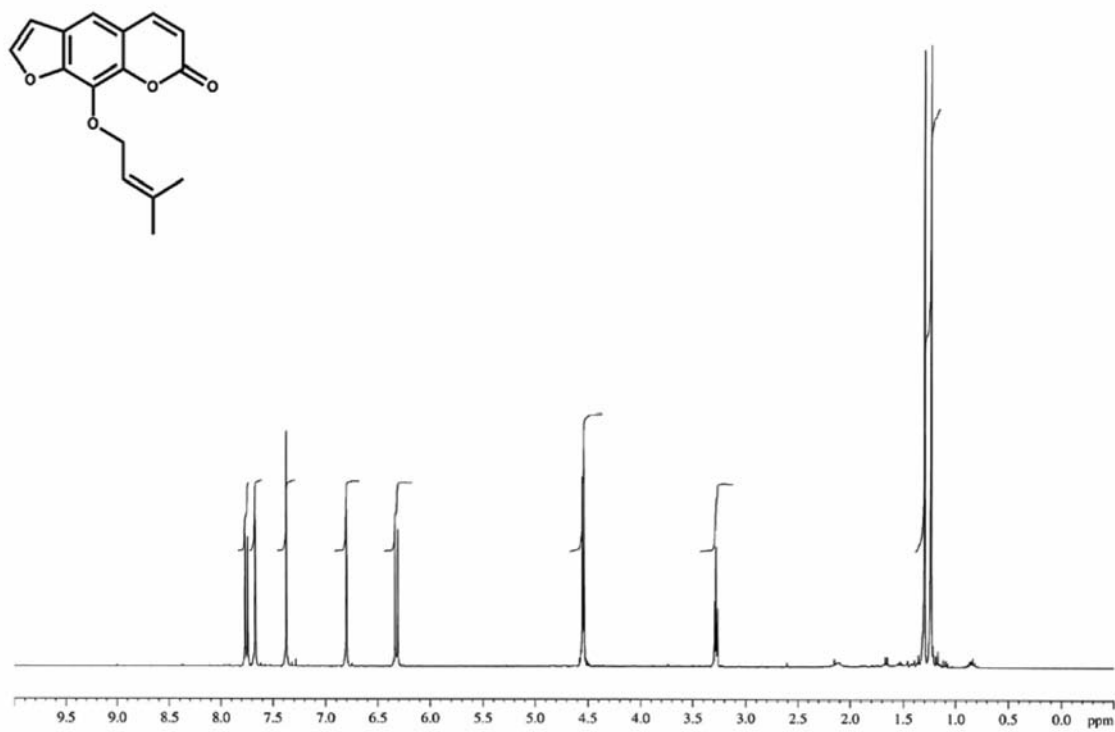


Figure S2. ¹H NMR spectrum of imperatorin (2) (400 MHz, CDCl₃).

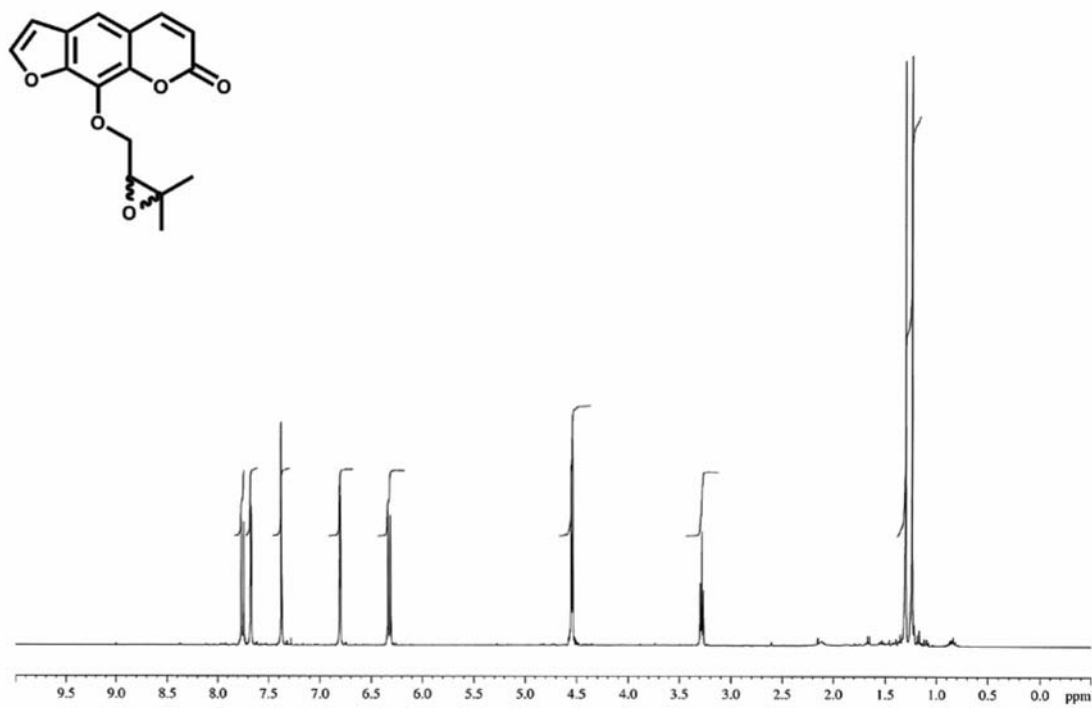


Figure S3. ¹H NMR spectrum of heraclenin (3) (400 MHz, CDCl₃).

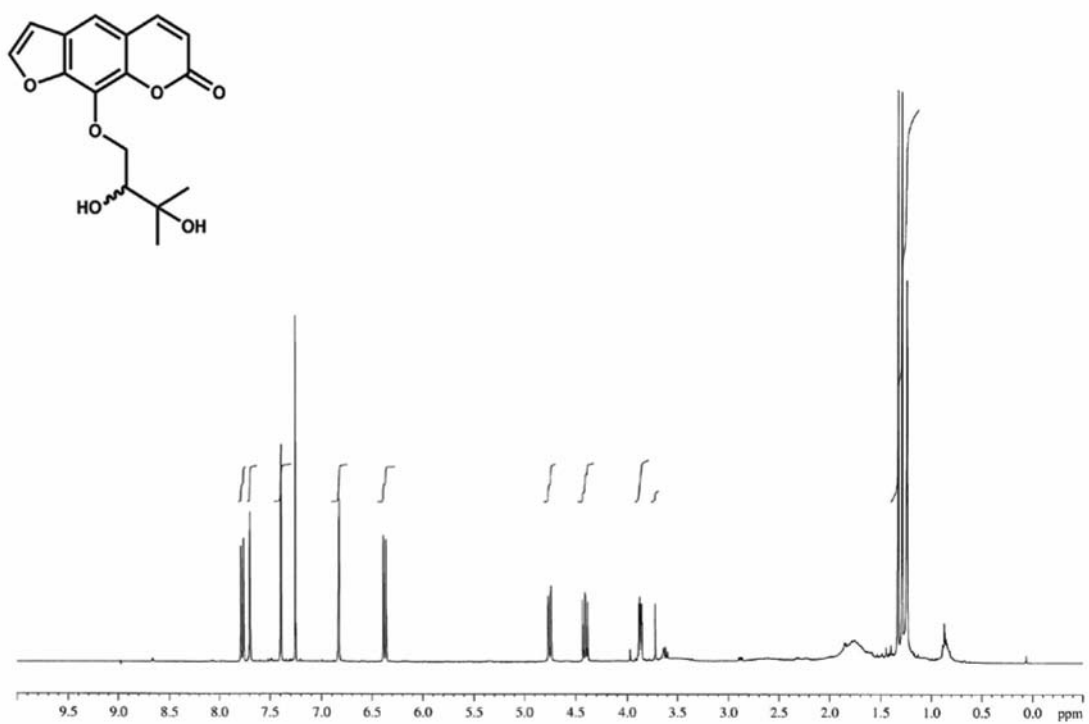


Figure S4. ¹H NMR spectrum of heraclenol (**4**) (400 MHz, CDCl₃).

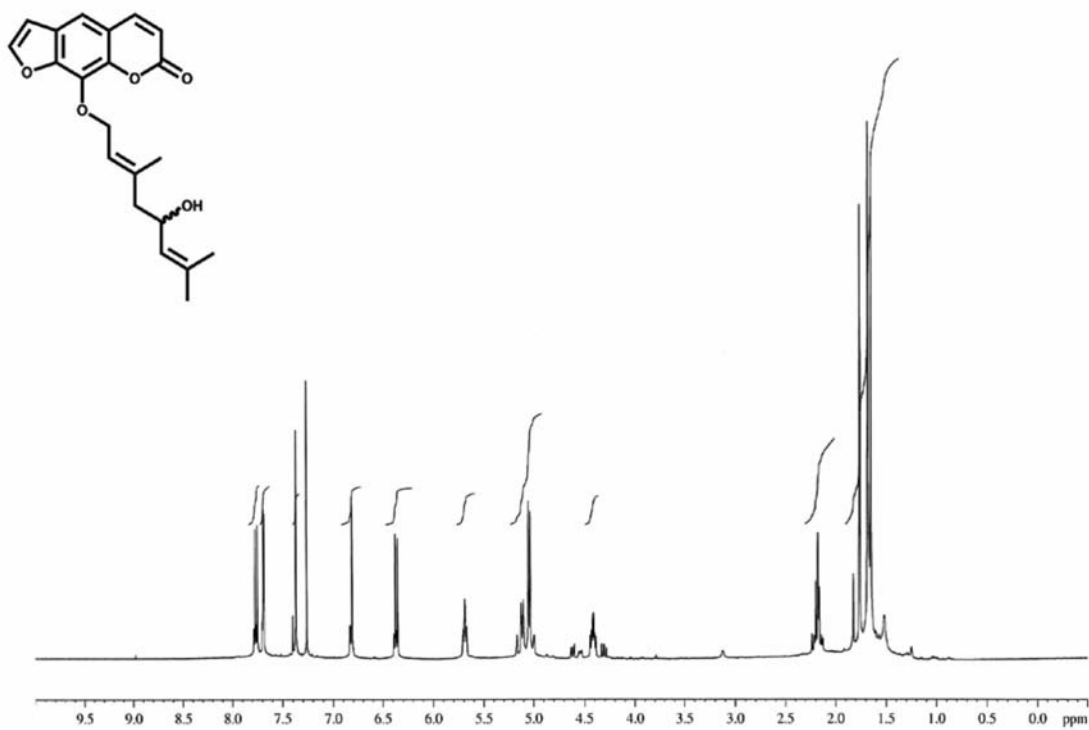


Figure S5. ¹H NMR spectrum of clausenalansimin A (**5**) (400 MHz, CDCl₃).

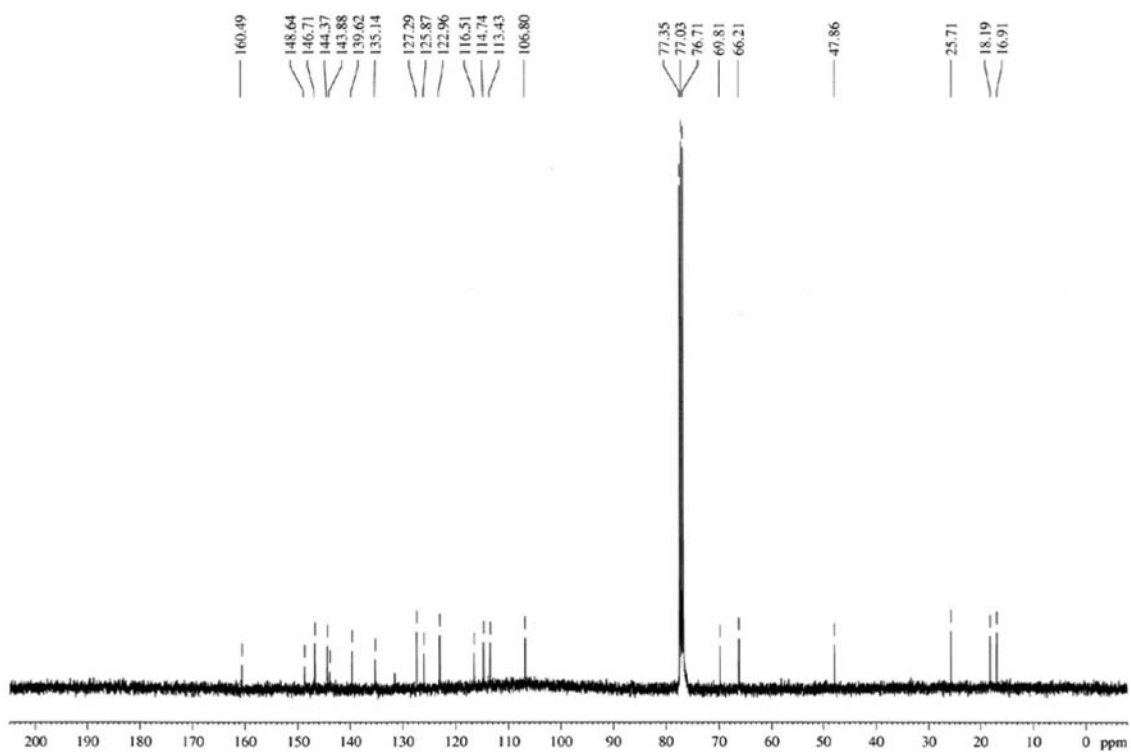


Figure S6. ¹³C NMR spectrum of clausenalansimin A (5) (100 MHz, CDCl₃).

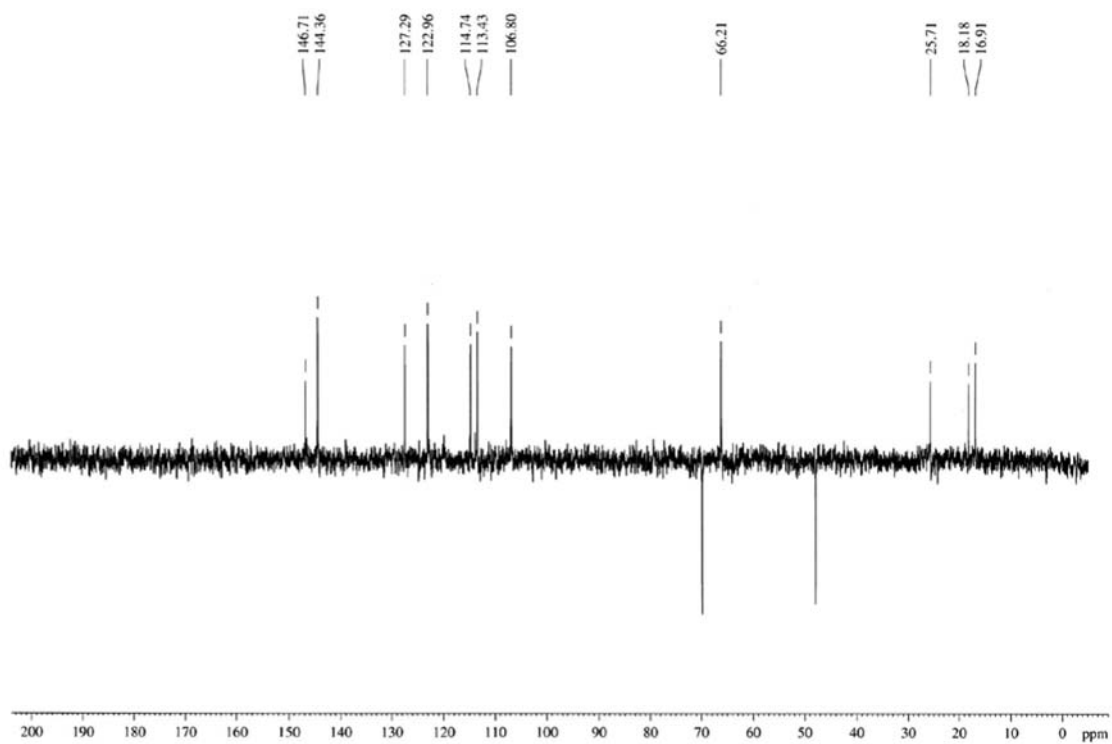


Figure S7. DEPT 135° spectrum of clausenalansimin A (5) (100 MHz, CDCl₃).

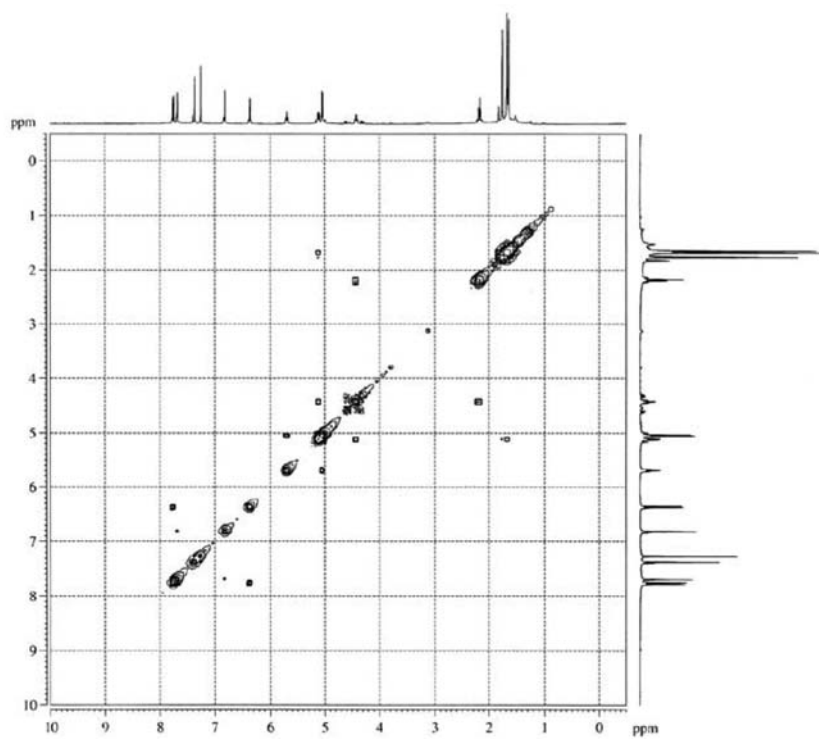


Figure S8. COSY spectrum of clausenalansimin A (**5**) (400 MHz, CDCl₃).

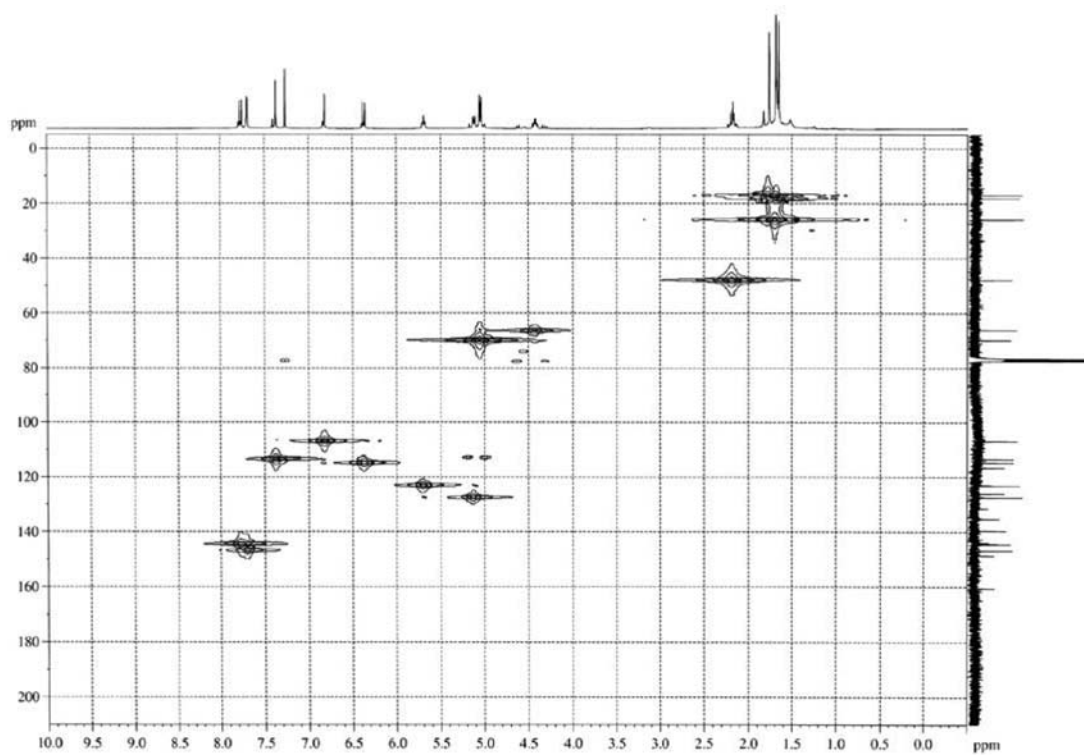


Figure S9. HMBC spectrum of clausenalansimin A (**5**) (400 MHz, CDCl₃).

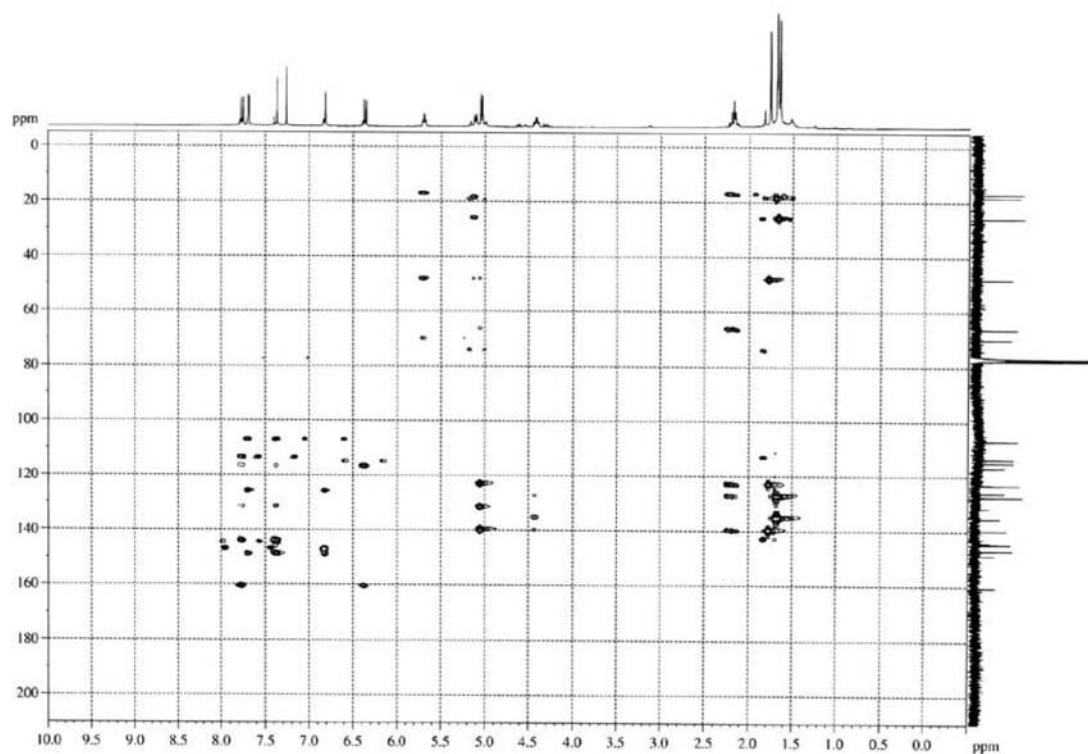


Figure S10. HMBC spectrum of clausenalansimin A (5) (400 MHz, CDCl₃).

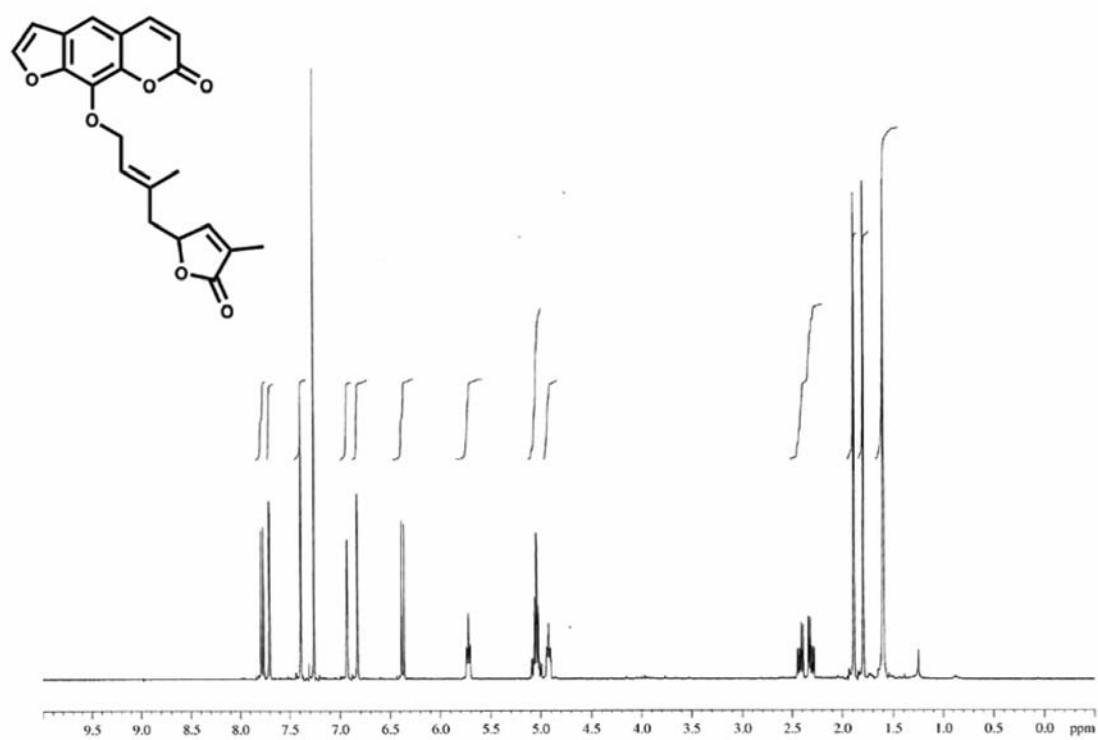


Figure S11. ¹H NMR spectrum of wampetin (6) (400 MHz, CDCl₃).

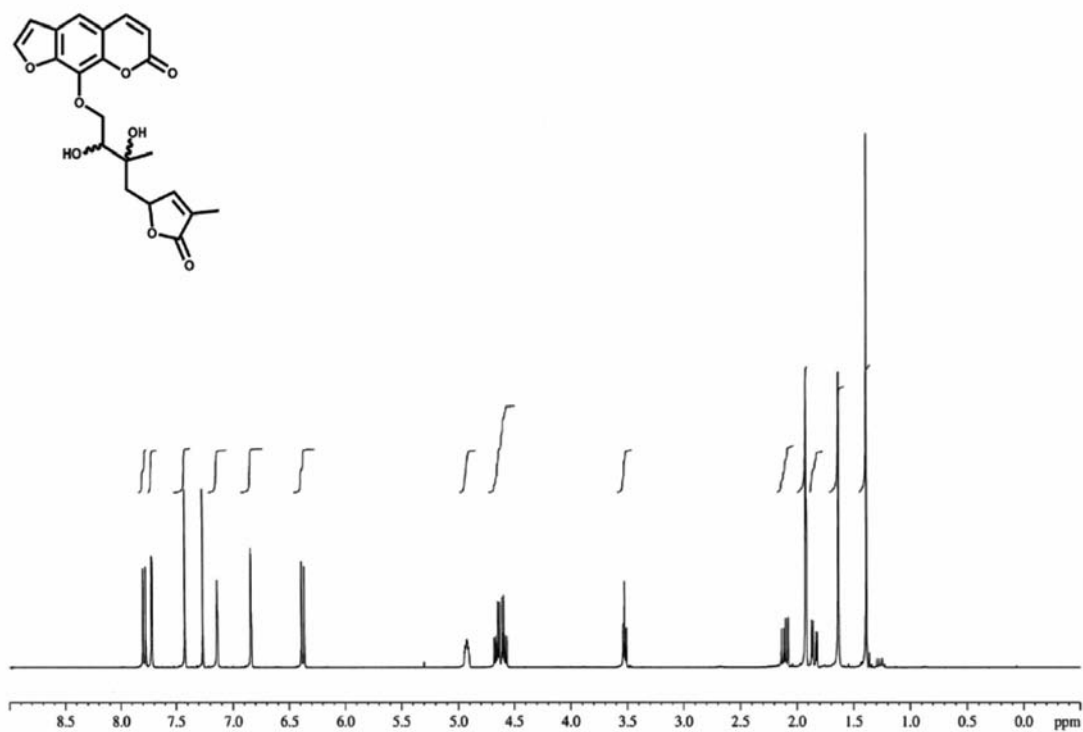


Figure S12. ¹H NMR spectrum of indicolactonediol (7) (400 MHz, CDCl₃).

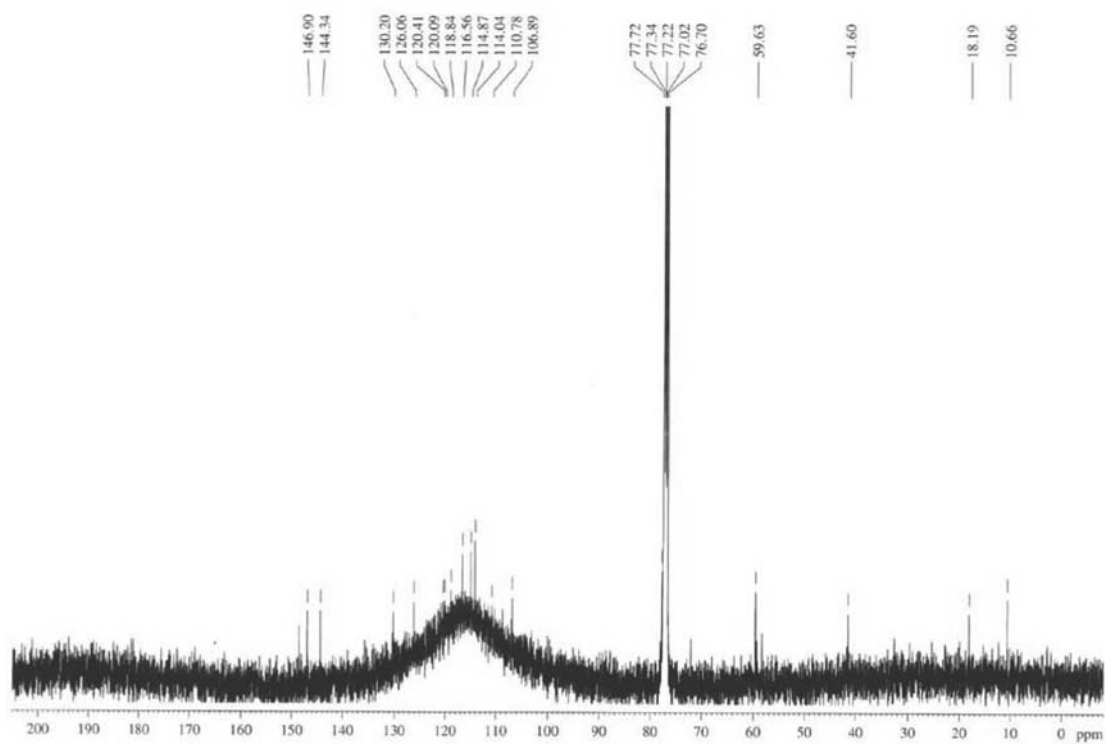


Figure S13. ¹³C NMR spectrum of indicolactonediol (7) (100 MHz, CDCl₃).

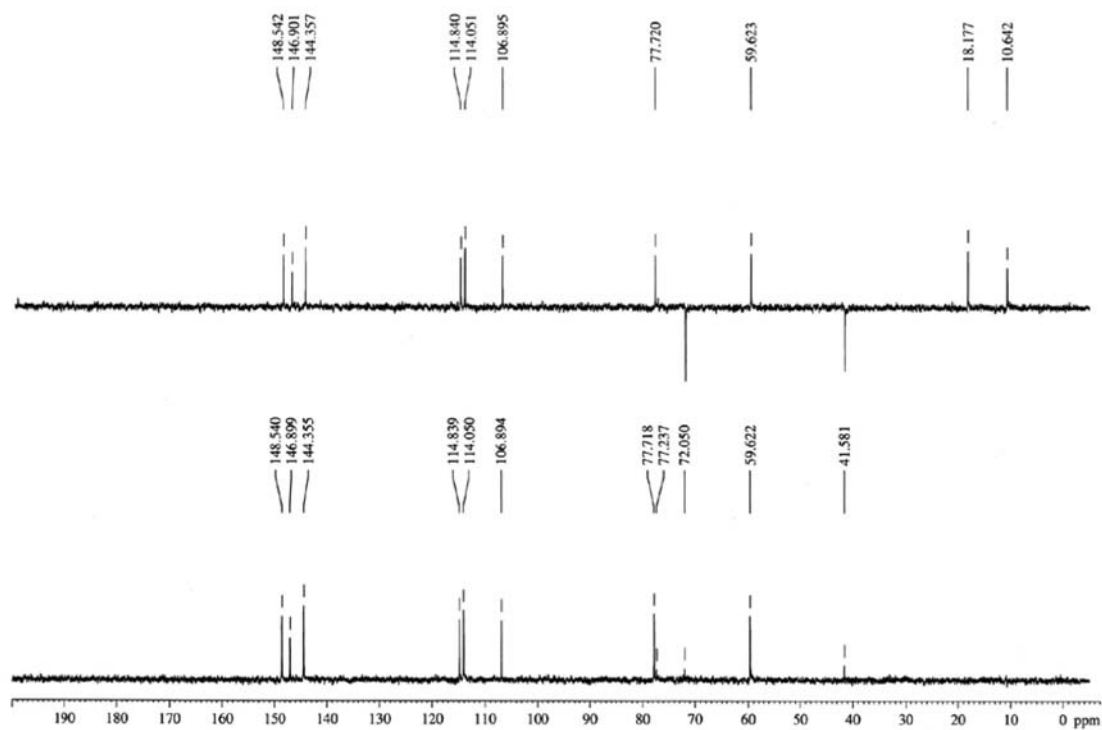


Figure S14. DEPT 135° and 90° spectrum of indicolactonediol (7) (100 MHz, CDCl₃).

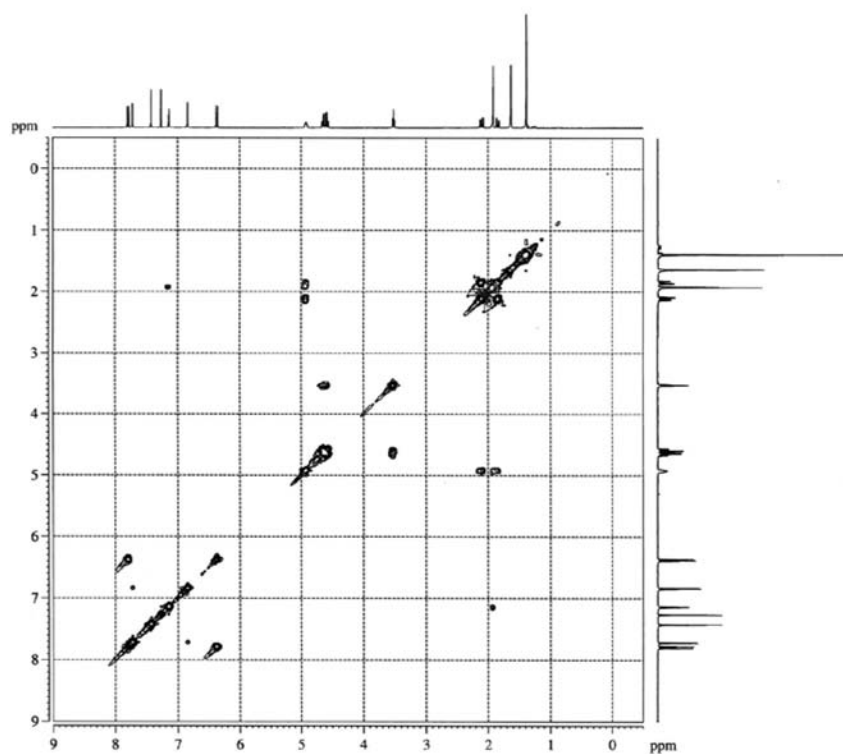


Figure S15. COSY spectrum of indicolactonediol (7) (400 MHz, CDCl₃).

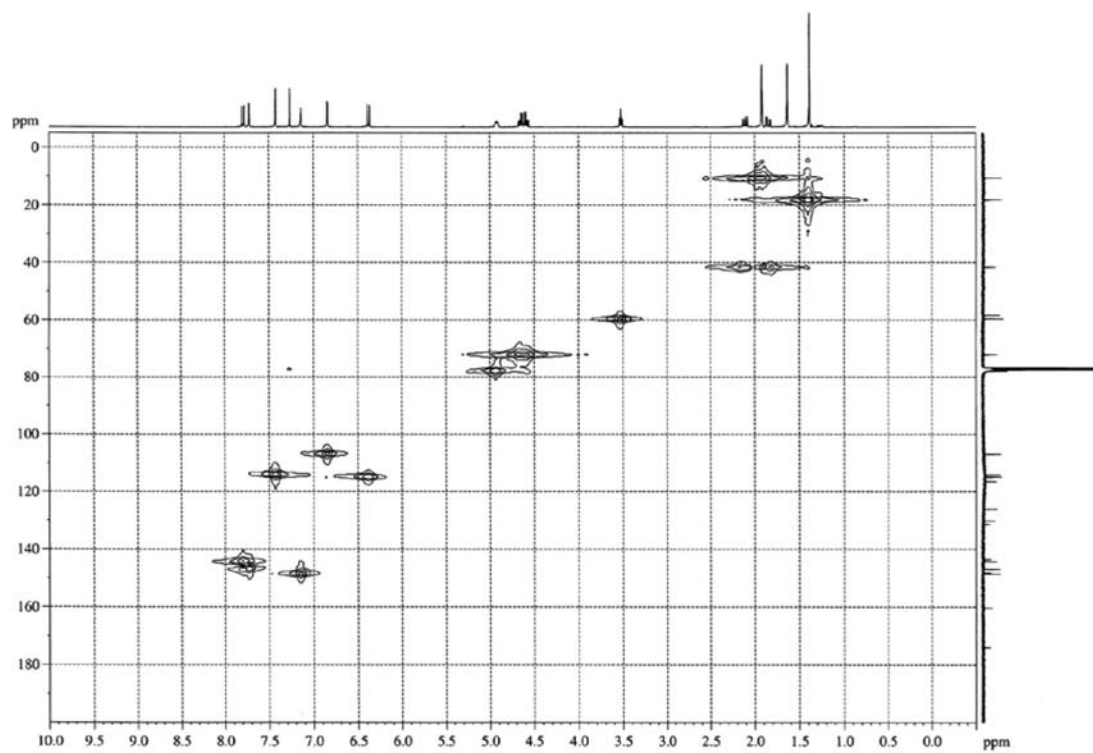


Figure S16. HMQC spectrum of indicolactonediol (**7**) (400 MHz, CDCl₃).

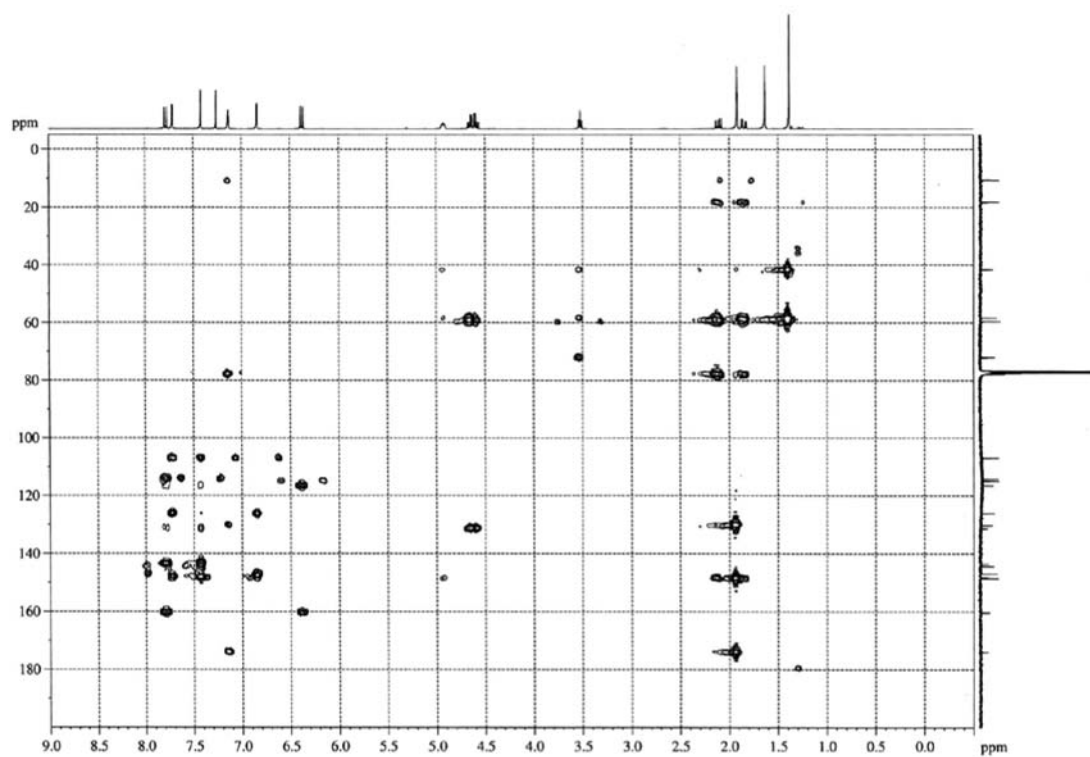


Figure S17. HMBC spectrum of indicolactonediol (**7**) (400 MHz, CDCl₃).

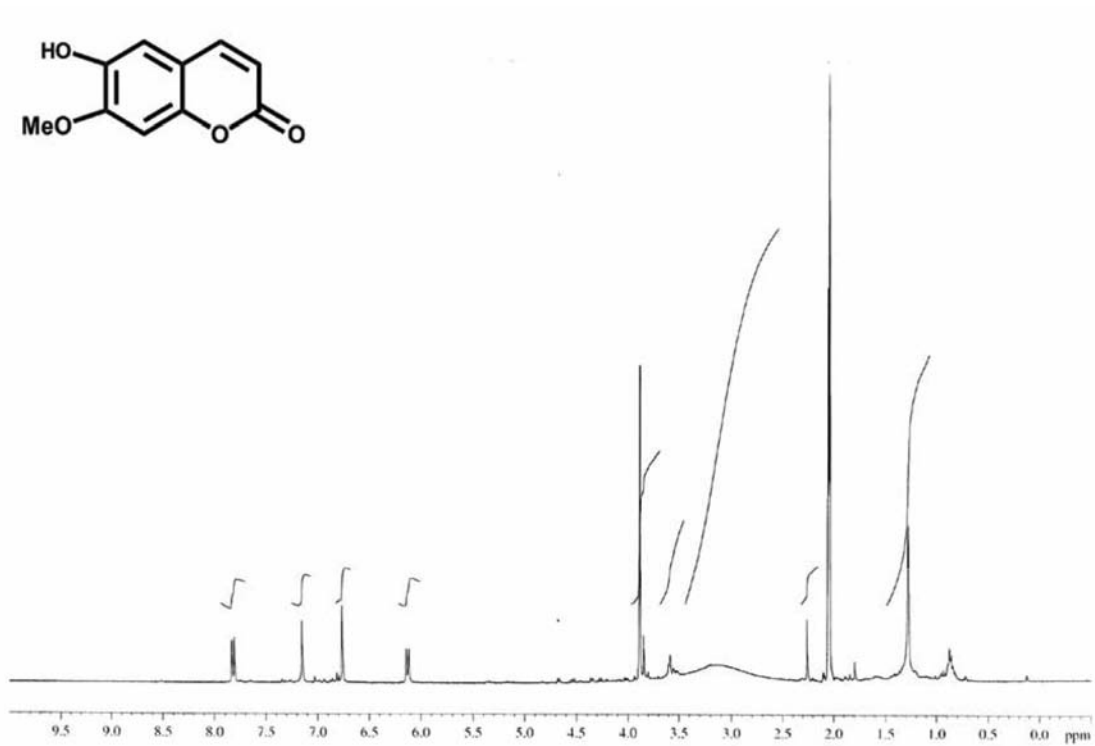


Figure S18. ¹H NMR spectrum of indicolactonediol (8) (400 MHz, Acetone-d₆).

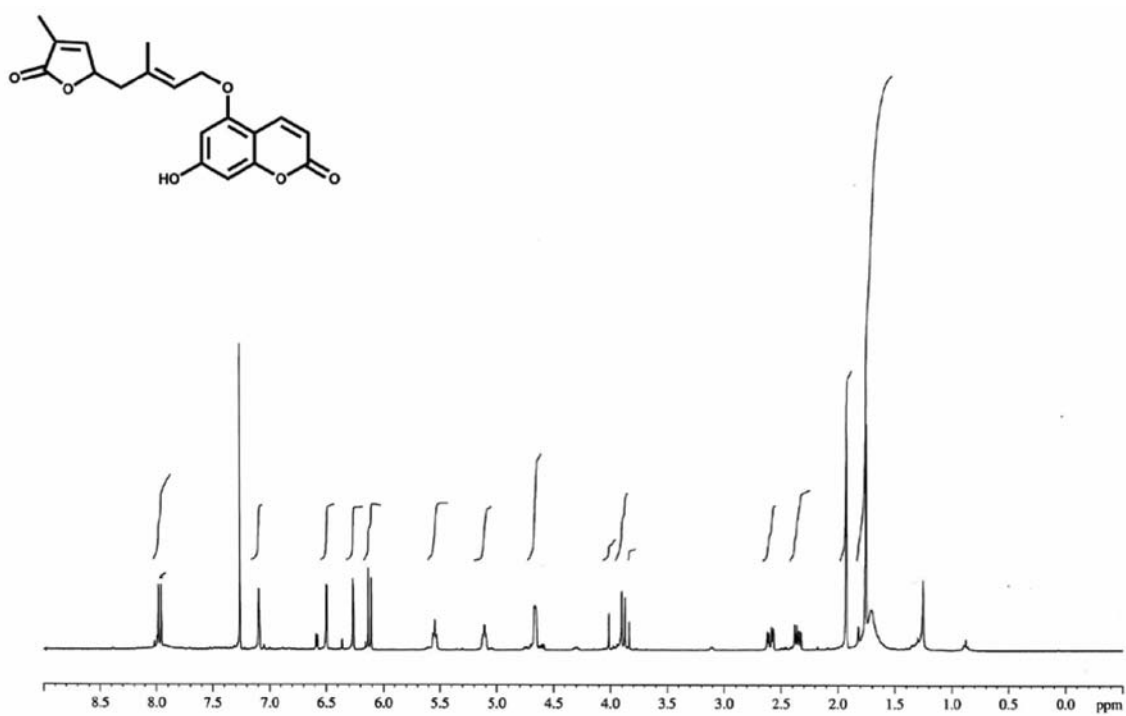


Figure S19. ¹H NMR spectrum of clausenalansimin B (9) (400 MHz, CDCl₃).

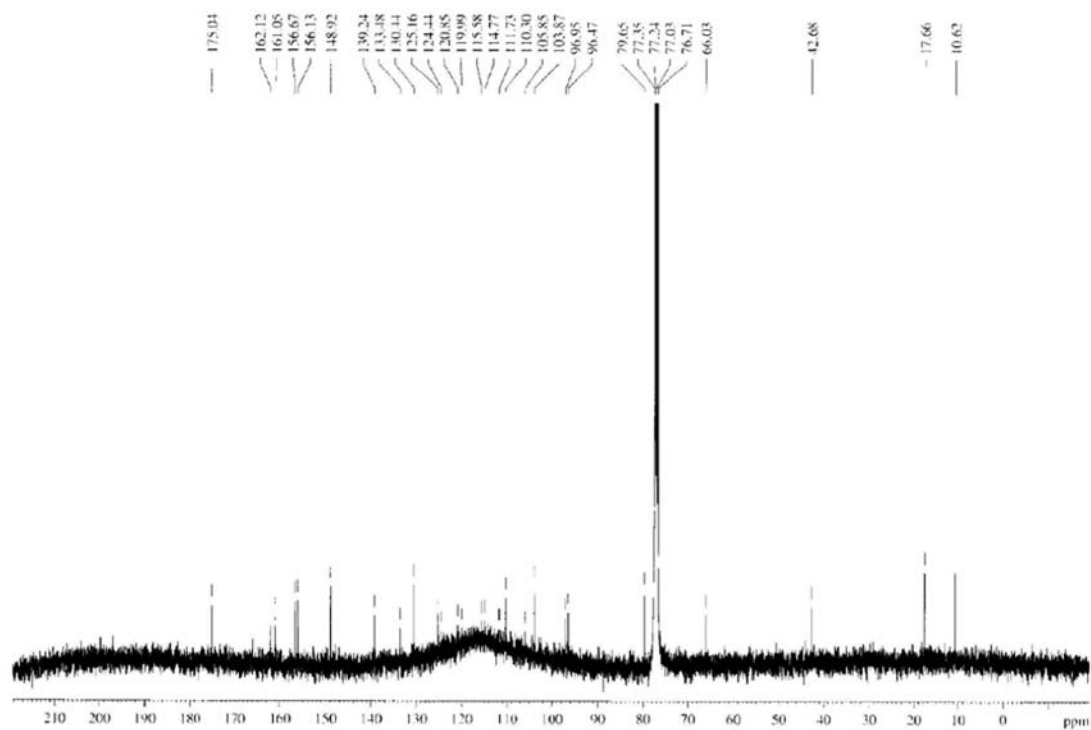


Figure S20. ¹³C NMR spectrum of clausenalansimin B (9) (100 MHz, CDCl₃).

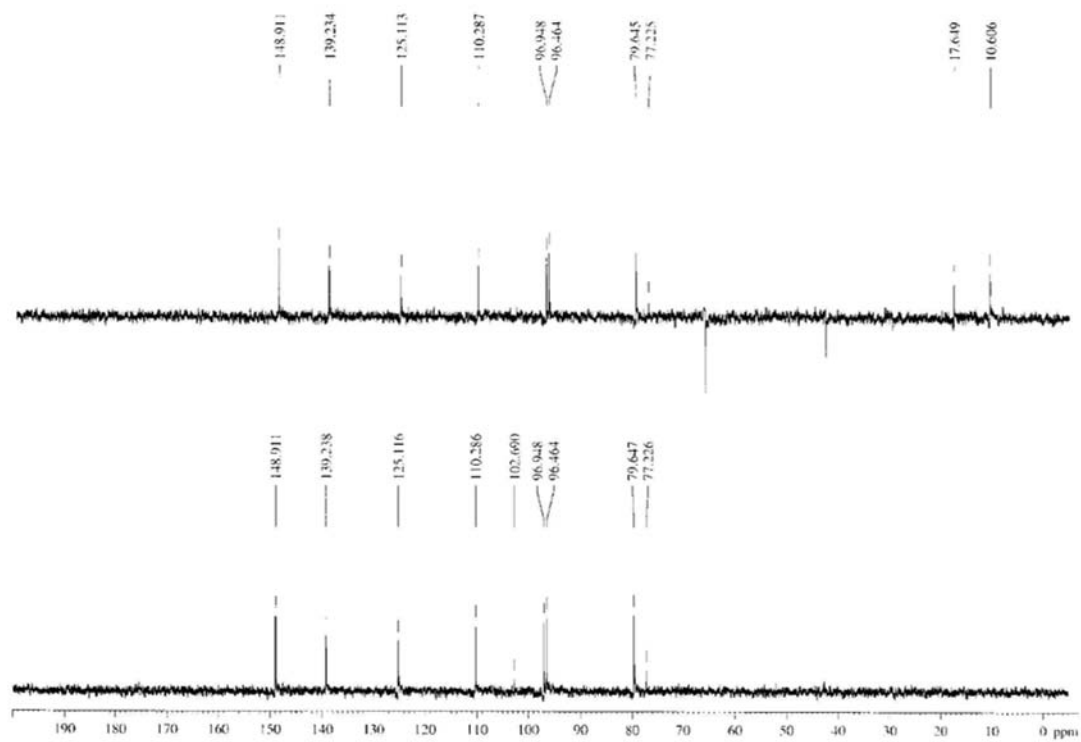


Figure S21. DEPT 135° and 90° spectrum of clausenalansimin B (9) (100 MHz, CDCl₃).

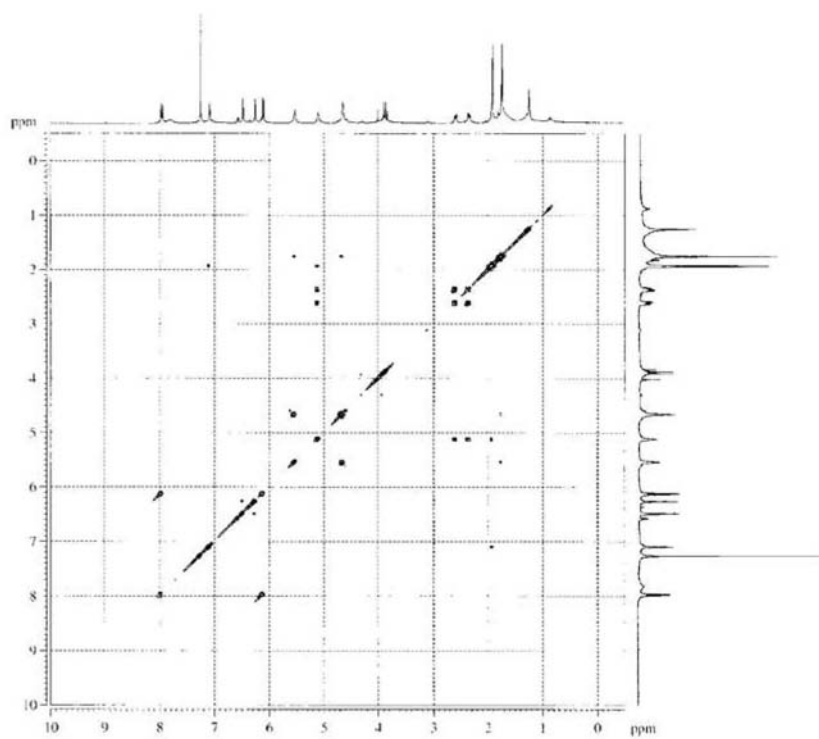


Figure S22. COSY spectrum of clausenalansimin B (**9**) (400 MHz, CDCl₃).

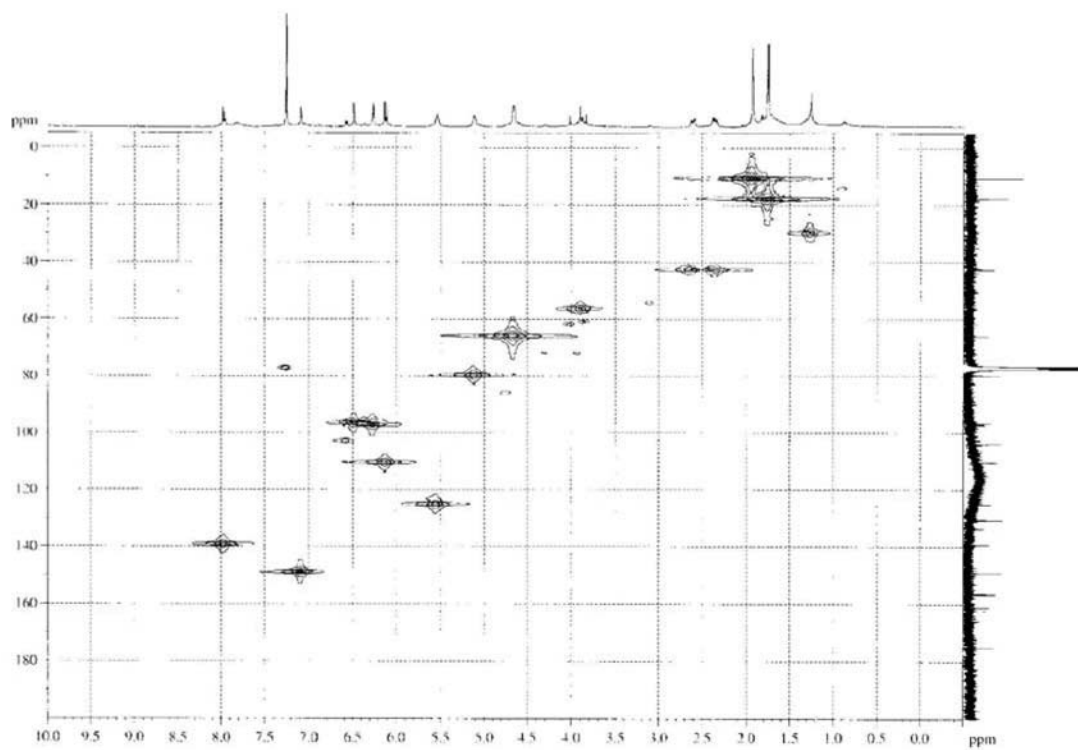


Figure S23. HMQC spectrum of clausenalansimin B (**9**) (400 MHz, CDCl₃).

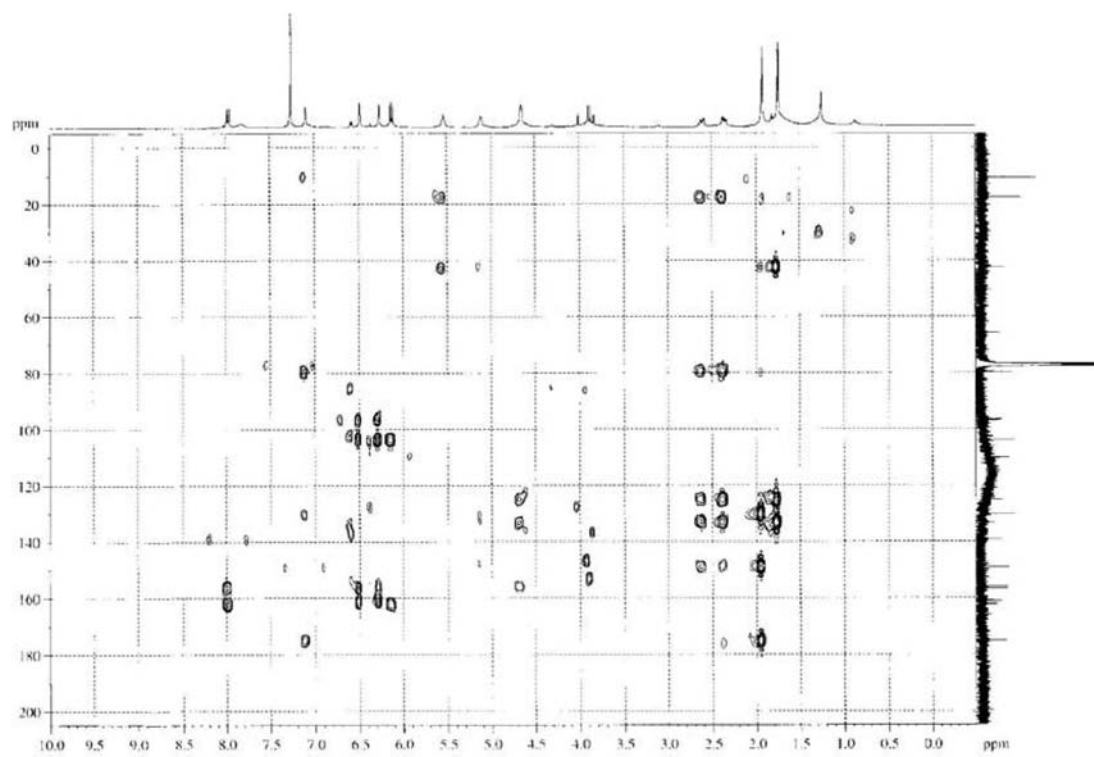


Figure S24. HMBC spectrum of clausenalansimin B (**9**) (400 MHz, CDCl₃).