

## Palladium(II) Complexes with Thiosemicarbazones. Syntheses, Characterization, Cytotoxicity against Breast Cancer Cells and Anti-*Mycobacterium tuberculosis* Activity

Pedro I. da S. Maia,<sup>a</sup> Angélica Graminha,<sup>b</sup> Fernando R. Pavan,<sup>c</sup> Clarice Q. F. Leite,<sup>c</sup>  
Alzir A. Batista,<sup>b</sup> Davi F. Back,<sup>d</sup> Ernesto S. Lang,<sup>d</sup> Javier Ellena,<sup>e</sup> Sebastião de S. Lemos,<sup>f</sup>  
Heloisa S. Salistre-de-Araujo<sup>g</sup> and Victor M. Deflon<sup>\*,a</sup>

<sup>a</sup> Instituto de Química de São Carlos, Universidade de São Paulo, 13566-590 São Carlos - SP, Brazil

<sup>b</sup> Departamento de Química, Universidade Federal de São Carlos, 13565-905 São Carlos - SP, Brazil

<sup>c</sup> Faculdade de Ciências Farmacêuticas, Universidade Estadual Paulista, 14801-902 Araraquara - SP, Brazil

<sup>d</sup> Departamento de Química, Universidade Federal de Santa Maria, 97105-900 Santa Maria - RS, Brazil

<sup>e</sup> Instituto de Física de São Carlos, Universidade de São Paulo, 13560-970 São Carlos - SP, Brazil

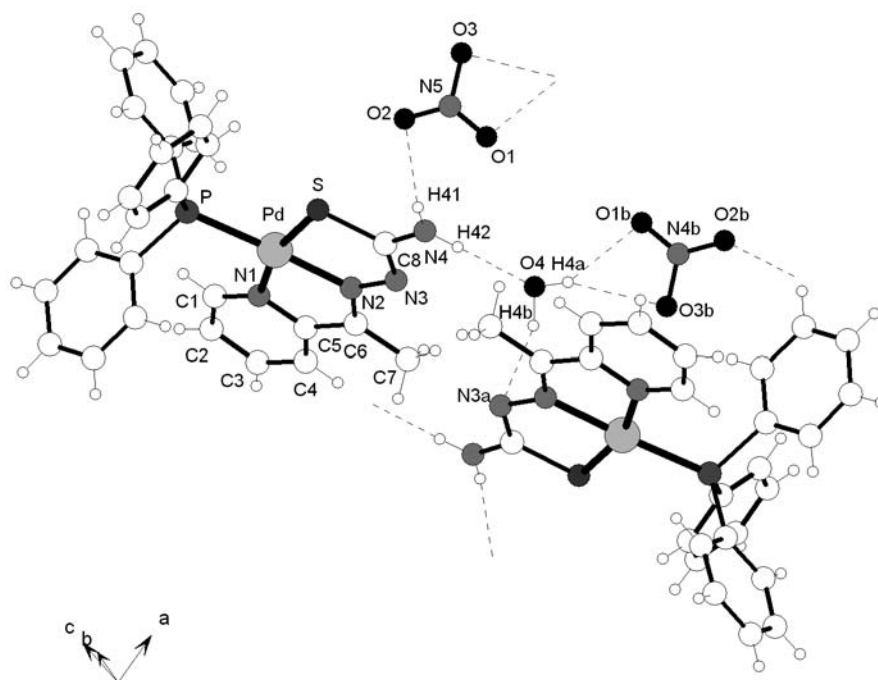
<sup>f</sup> Instituto de Química, Universidade de Brasília, 70919-970 Brasília - DF, Brazil

<sup>g</sup> Departamento de Ciências Fisiológicas, Universidade Federal de São Carlos, 13565-905 São Carlos - SP, Brazil

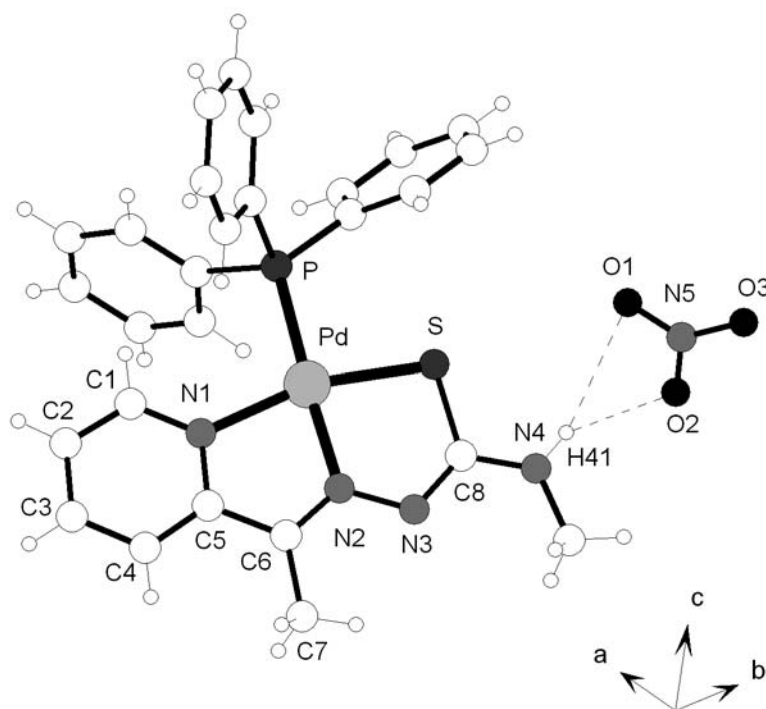
**Table S1.** Hydrogen bonds (distances in pm and angles in °) for complexes **1-3**, calculated for distances  $d(\text{H}\cdots\text{A}) < r(\text{A}) + 200.0$  pm and angles  $\angle(\text{D}-\text{H}\cdots\text{A}) > 110^\circ$  (D = H-donor, A = H-acceptor)

D-H...A	d(H...A)	$\angle(\text{D}-\text{H}\cdots\text{A})$	d(D...A)	Symmetry operation
Complex 1				
N(4)-H(41a)...O(4)	205.3	177.69	291.2	
N(4)-H(41b)...O(2)	223.1	151.91	301.7	
O(4)-H(4a)...O(1)	231.7	150.42	309.1	-x+3, -y+1, -z+1
O(4)-H(4a)...O(3)	242.8	155.95	322.9	-x+3, -y+1, -z+1
O(4)-H(4b)...N(3)	256.1	135.37	328.2	-x+2, -y+1, -z+1
Complex 2				
N(4)-H(41)...O(1)	259.2	145.41	333.6	
N(4)-H(41)...O(2)	206.5	149.85	284.2	
Complex 3				
O(4b)-H(411b)...O(1b)	214.9	135.67	282.0	x-1, y, z
N(4)-H(41)...O(4b)	206.1	162.88	289.4	x-1, y, z

\*e-mail: deflon@iqsc.usp.br



**Figure S1.** View of the crystal structure of  $[\text{Pd}(\text{apts})(\text{PPh}_3)](\text{NO}_3)\cdot\text{H}_2\text{O}$  (**1**) toward the direction  $[001]$ , showing the hydrogen bonds as dashed lines.



**Figure S2.** View of the crystal structure of  $[\text{Pd}(\text{apmtsc})(\text{PPh}_3)](\text{NO}_3)$  (**2**) parallel to the plane  $ab$ , showing the hydrogen bonds as dashed lines.

