

# Supplementary Information

## Ethanolysis Optimisation of Jupati (*Raphia taedigera* Mart.) Oil to Biodiesel Using Response Surface Methodology

Leyvison R. V. da Conceição,<sup>a</sup> Carlos E. F. da Costa,<sup>a</sup> Geraldo N. da Rocha Filho,<sup>a</sup>  
Edenir R. Pereira-Filho<sup>b</sup> and José R. Zamian<sup>\*,a</sup>

<sup>a</sup>Laboratory of Catalysis and Oil-Chemistry, Graduate Program in Chemistry,  
Federal University of Pará, 66075-110 Belém-PA, Brazil

<sup>b</sup>Group of Applied Instrumental Analysis, Department of Chemistry,  
Federal University of São Carlos, P.O. Box 676, 13565-905 São Carlos-SP, Brazil

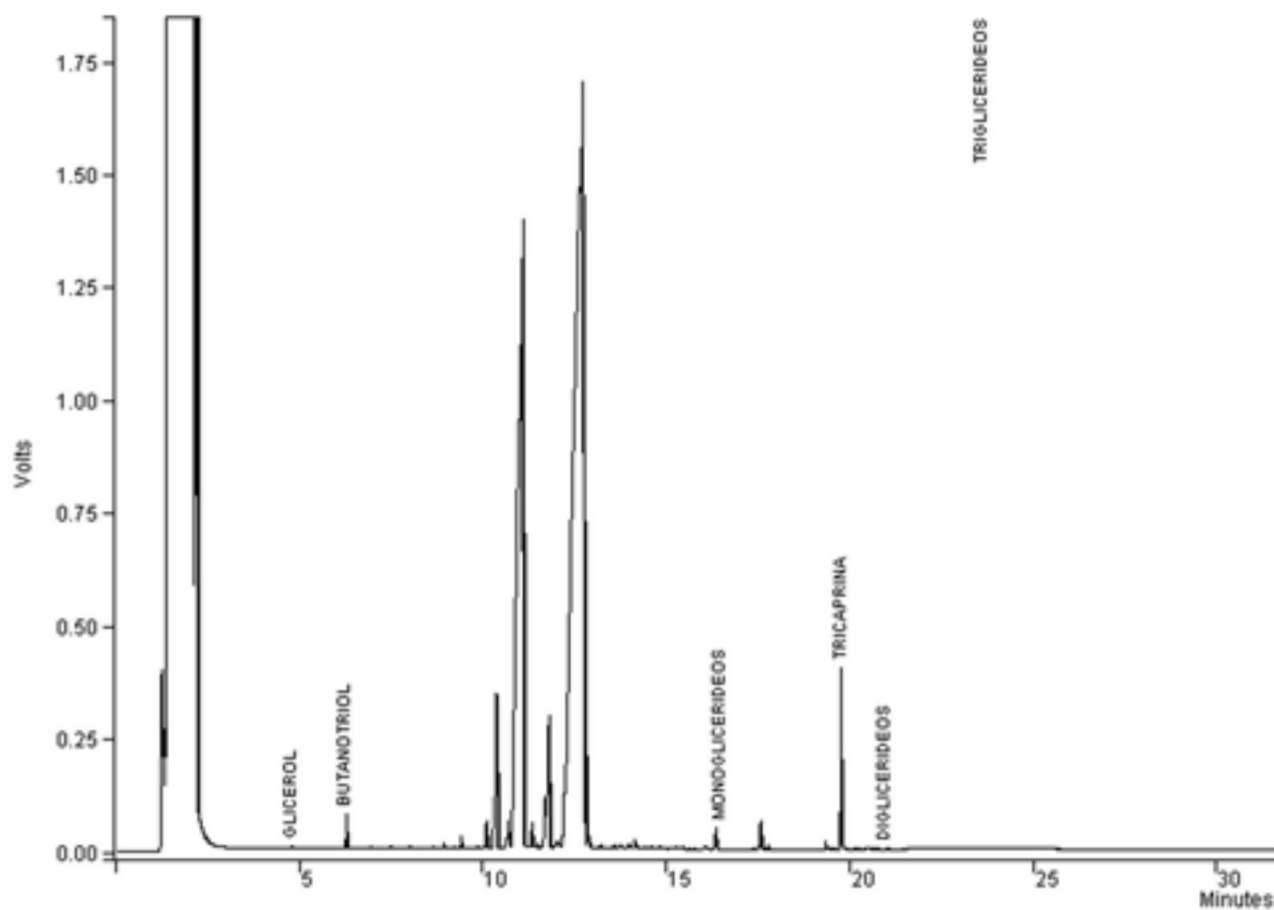
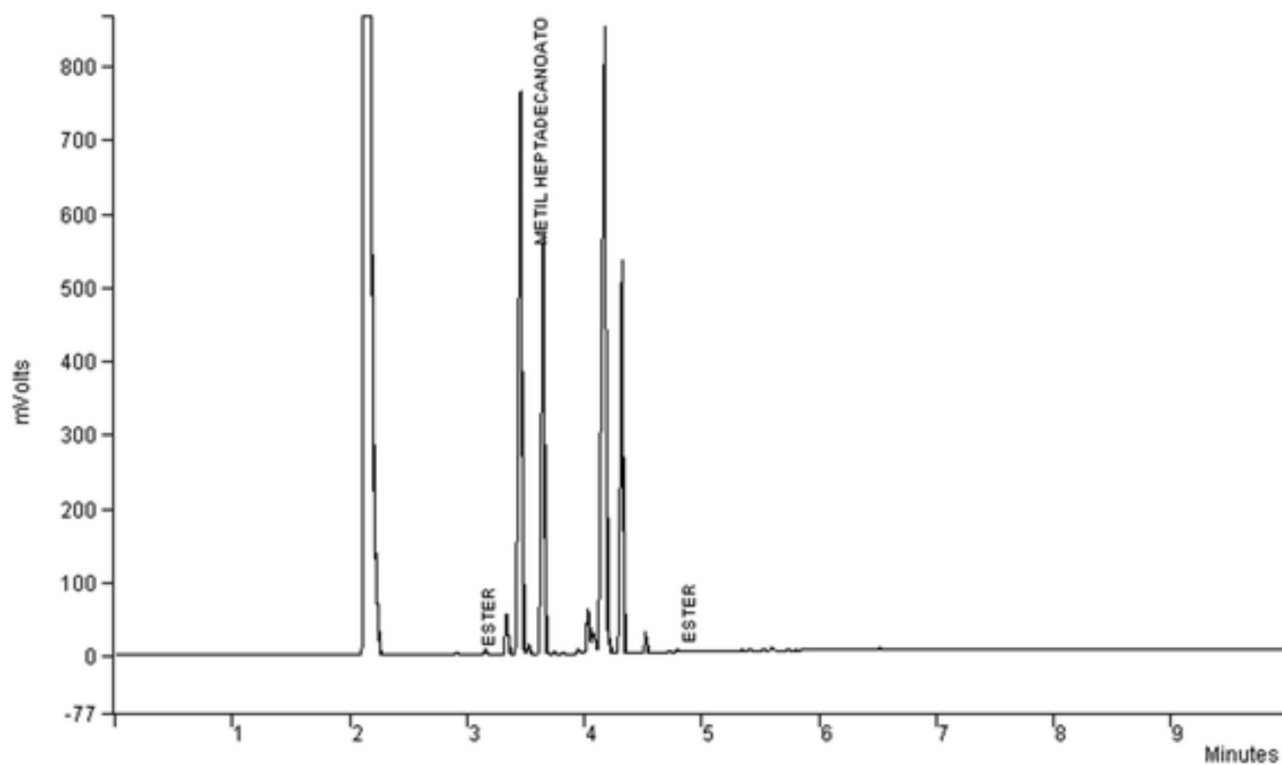


Figure S1. Jupati biodiesel chromatogram for determination of the mono-, di- and triglycerides.

\*e-mail: zamian@ufpa.br



**Figure S2.** Jupati biodiesel chromatogram for determination of the ester content. Original files in the “.wrt” format are available under request from authors.