

Identification of Impact Aroma Compounds in *Eugenia uniflora* L. (Brazilian Pitanga) Leaf Essential Oil

Rosineia M. Melo, Vivian F. S. Corrêa, Ana Carolina L. Amorim, Ana Luisa P. Miranda and Claudia M. Rezende*

Instituto de Química, Universidade Federal do Rio de Janeiro, Centro de Tecnologia, Bloco A, 21945-970 Rio de Janeiro-RJ, Brazil

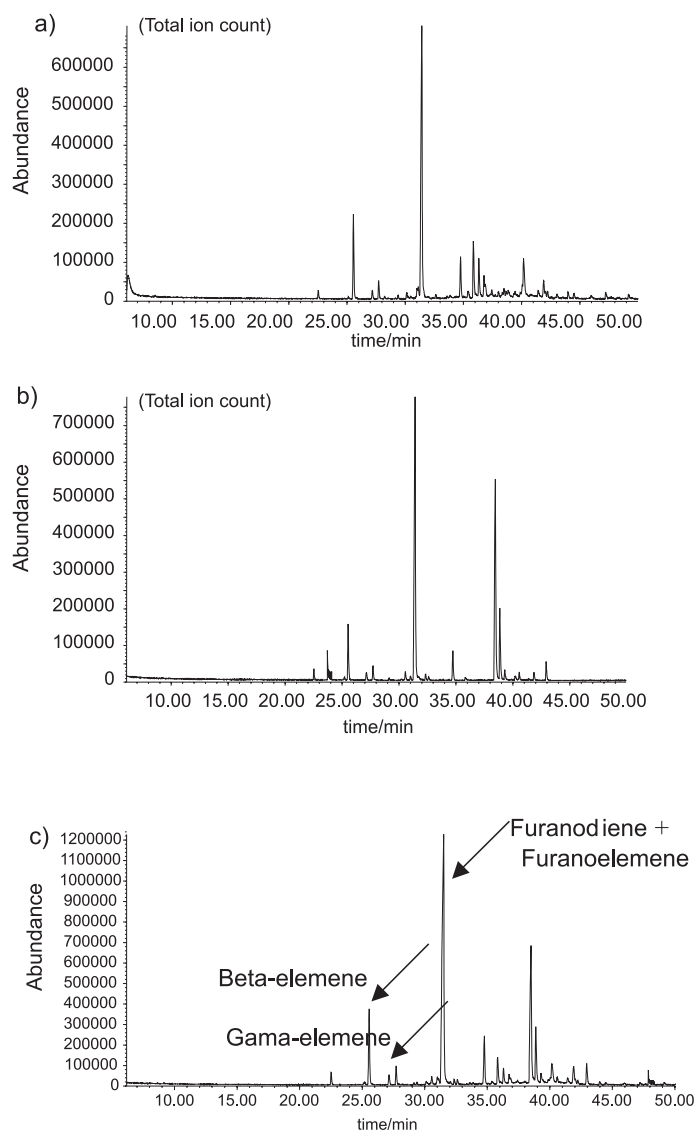


Figure S1. (a) GCMS of myrrh essential oil (*Commiphora myrrha*); (b) GCMS of *E. uniflora* leaves essential oil; (c) Co-injection of both oils (A + B).

*e-mail: crezende@iq.ufrj.br

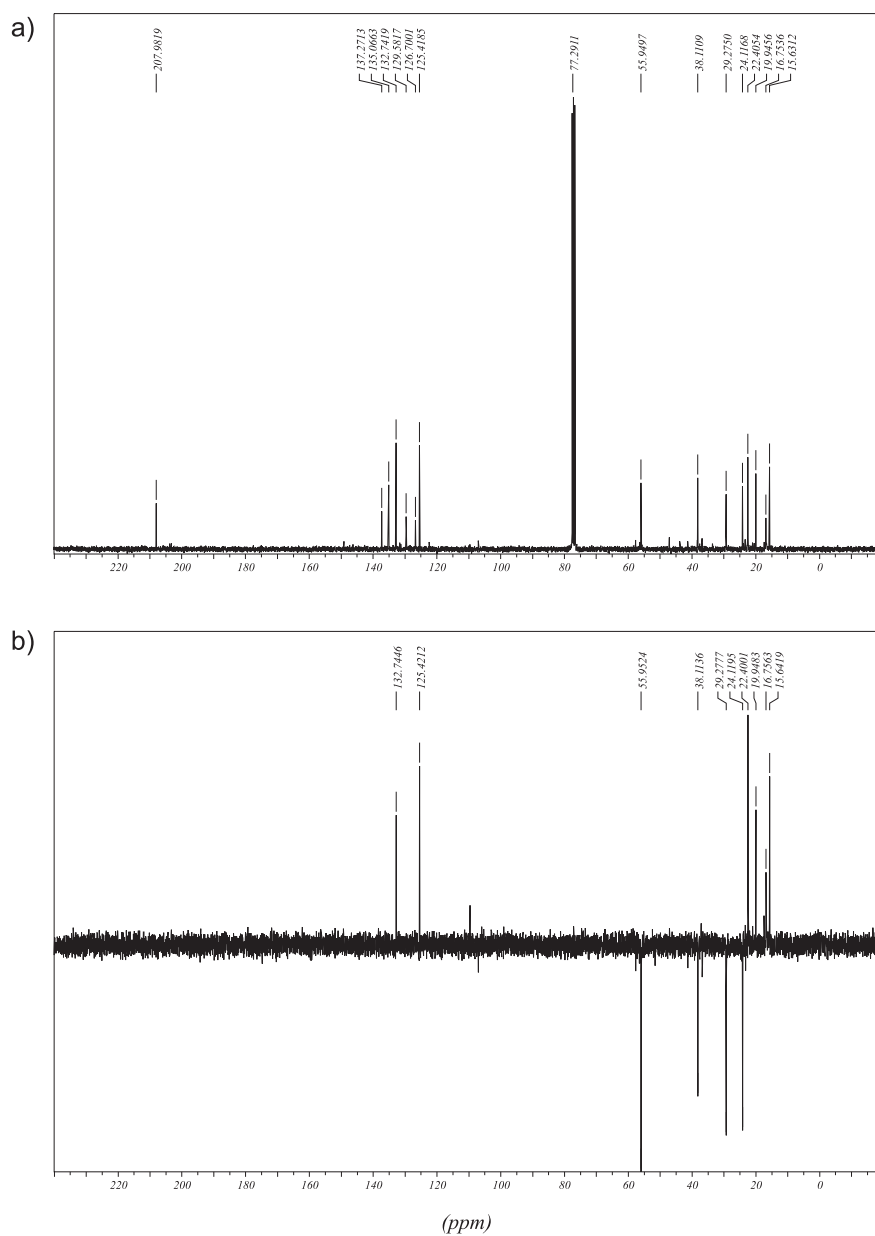


Figure S2. NMR spectra of germacrone: (a) ^{13}C NMR and (b) DEPT135.

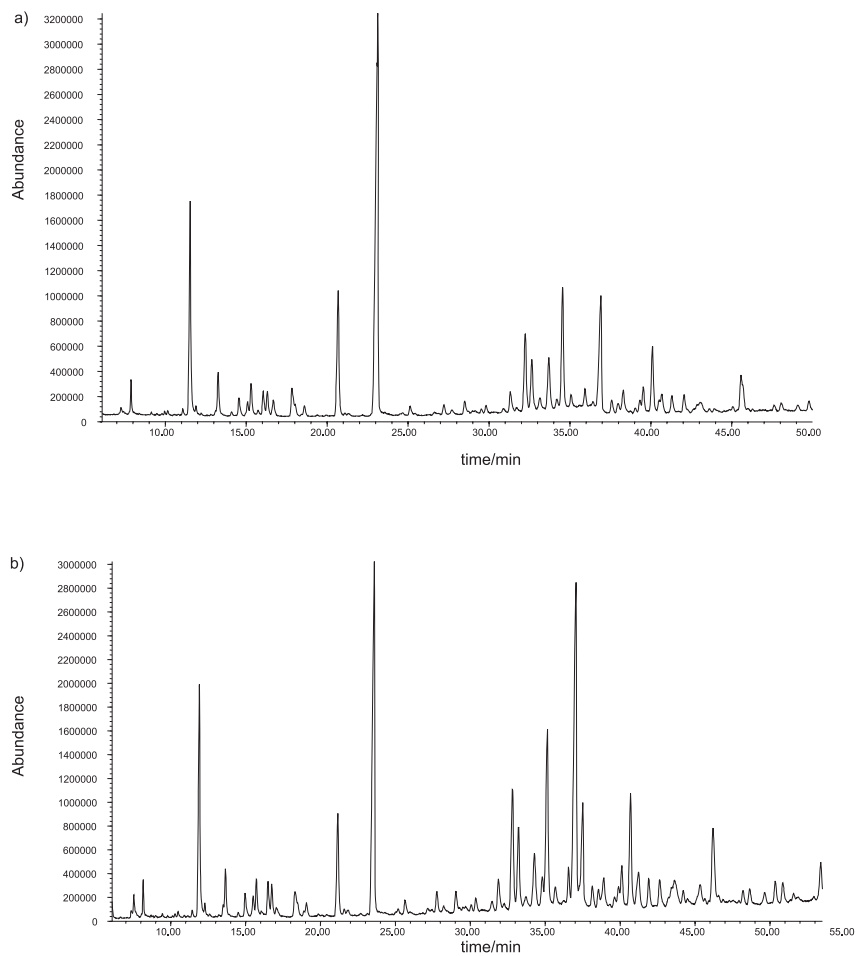


Figure S3. (a) GCMS of *E. uniflora* leaves essential oil; (b) GCMS of *E. uniflora* leaves essential oil with the addition of selina-1,3,7(11)-trien-8-one.

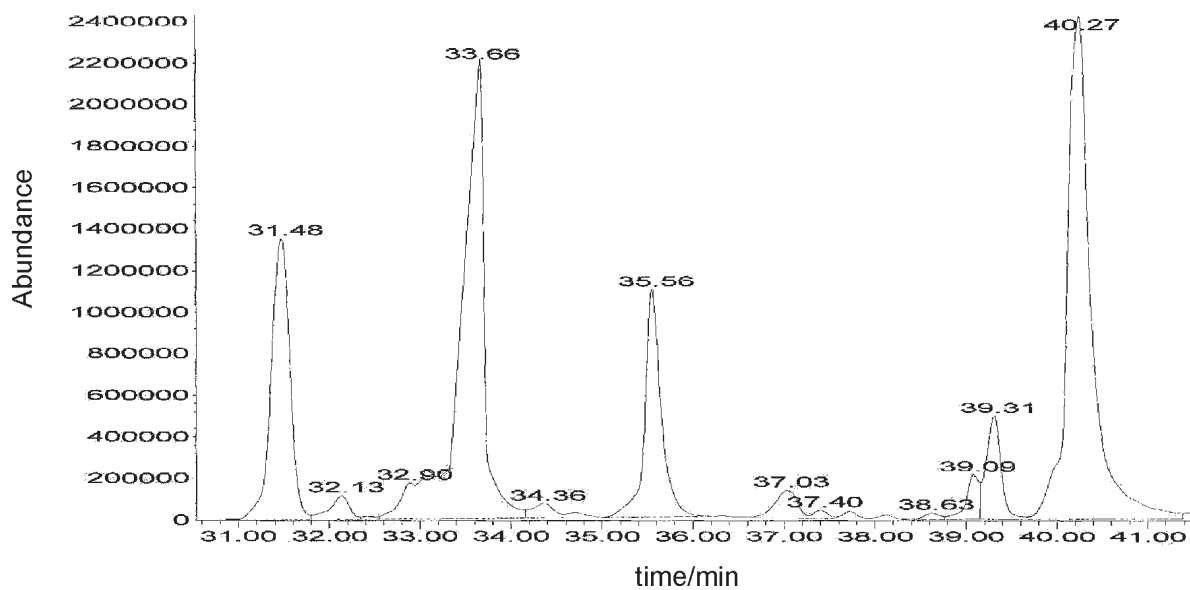


Figure S4. Chiral GCMS in Cyclodex B capillary column (30m \times 0.25mm \times 0.25 μ m) of (-)- δ -cadinene (Davis, G.D.; Essenberg, M.; *Phytochemistry* 1995, 39, 553).